

## CERTIFIED CORNER RECORDATION

Corner 1/4 S21 T. \_\_\_\_\_ R. \_\_\_\_\_ P.M.,M  
S28 T. 9N R. 6W P.M.,M. POWELL County

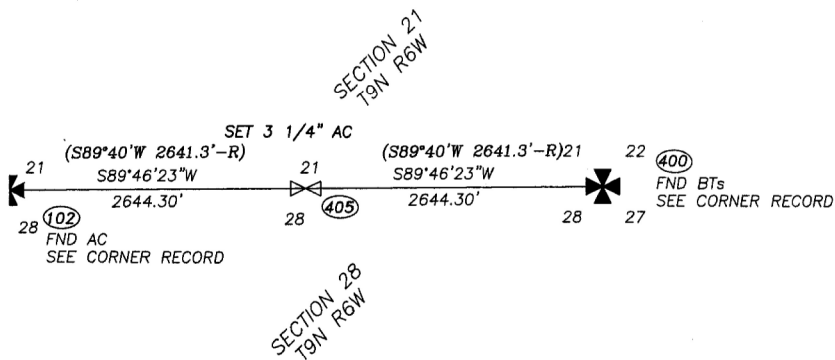
1902 GLO Original Survey by Williams Book Vol. 4106 Page 65:

"Set a granite stone 18x10x6 ins 12 ins in the ground for 1-4 Sec Cor marked 1-4 on N face from which" BTs followed...

2009 Recovery and Remonumentation by Stark (12249LS):

To the west, the original section corner stone was found and remonumented by the USFS in 1985. To the east, original BT's were found to replace the missing section corner stone. 1 mile east, the original stone at the 1/4 corner was found with matching original BT's however we found no marks on the stone. I was unable to locate the original stone after diligent search, both in and out of the search area. I did find a unmarked stone (18"x10"x3"), that fit closely with 2 of 3 record dimensions approximately N34°W 5.7' from the calculated midpoint, but I could not justify using it due to its very irregular shape and lack of markings. I determined the best location for the corner to be a proportioned midpoint. At this position, I set a 30" long 2 1/2" diameter aluminum pipe, with a 3 1/4" aluminum cap stamped as shown below. The cap is 6" above ground.

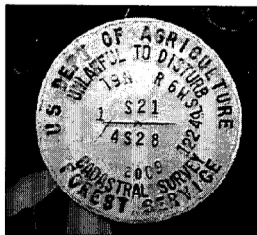
No Bearing Trees were created due to lack of living trees at this location.



NAD83(cors96) [FOR REFERENCE ONLY!]  
 46°30'43.196"N  
 112°21'29.473"W

(405) - SURVEY SHOT #

Bearings listed in remonumentation section were measured with GPS and rotated to Geodetic North at the project's Control Point #1.



SKETCH OF CORNER

CERTIFICATION

I, Thomas E. Stark  
 CERTIFY THAT THE ABOVE INFORMATION IS TRUE AND CORRECT

SIGNATURE OF SURVEYOR AND SEAL

I, Thomas E. Stark  
 CERTIFY THAT THE CORNER RECORD CORRECTLY REPRESENTS  
 WORK PERFORMED BY ME OR UNDER MY DIRECTION IN  
 COMPLIANCE WITH THE CORNER RECORDATION ACT  
 (MONTANA CODE ANNOTATED 19-22-101) M.C.A.

SIGNATURE OF SURVEYOR AND SEAL

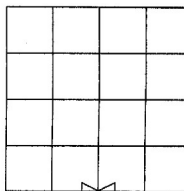
DATE: 9/15/2010 12249LS  
 EMPLOYER: ROBERTSON & ASSOC

OFFICIAL **165830 Fee: \$0.00 Bk Pg**

POWELL COUNTY Filed 11/15/2010 At 11:40 AM  
 Diane S. Grey, Clk & Rcdr By Jarita Beckles  
 Return To: FILING

CORNER RECORD"

SECTION 21



BOOK

COUNTY OFFICIAL

CROSS INDEX NO. \_\_\_\_\_ T. \_\_\_\_\_ R. \_\_\_\_\_ P.M.,M.  
 CROSS INDEX NO. R-11 T. 9N R. 6W P.M.,M.

✕ CORNER THIS SHEET (#405)