

CERTIFIED CORNER RECORDATION

Corner $1/4$ $\frac{S22}{S27}$ T. _____ R. _____ P.M.,M
 T. 9N R. 6W P.M.,M. POWELL County

1902 GLO Original Survey by Williams Book Vol. 4106 Page 43:

"Set a granite stone 12x10x7 ins 8 ins in the ground for 1-4 Sec Cor marked 1-4 on N face from which

A pine 7 ins. diam. bears N 81°30' E 40 lks. dist. marked 1-4 S22 B.T.

A pine 6 ins. diam. bears S 23°30' E 42 lks. dist. marked 1-4 S27 B.T.

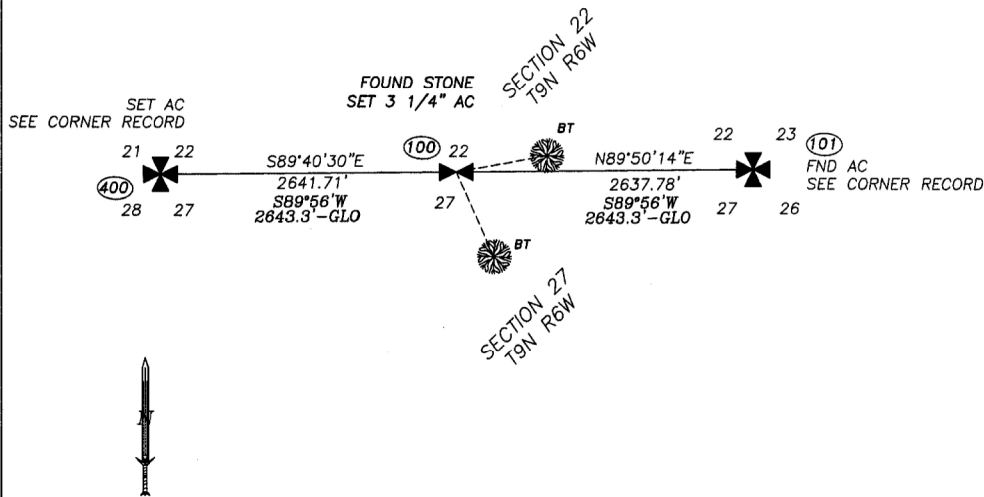
2009 Recovery and Remonumentation by Stark (12249LS):

I find both original Bearing Trees and at the point of intersection from the notes, I find a stone, 12"x8"x6", showing 4" out of the ground. I cannot find any marks on the stone however the stone fits closely with the record size and fits with adjacent found monuments. At the position marked by the found stone, I set a 30" long 2 1/2" diameter aluminum pipe, with a 3 1/4" dia. aluminum cap stamped as shown below. I bury the stone alongside the monument. The cap is 6" above ground. From which:

A 20" dead pine, with evidence of original scribing, bears N76°30'E 26.3' dist. with BT tag.

A 18" dead fir, with evidence of original scribing, bears S26°30'E 27.2' dist. with BT tag.

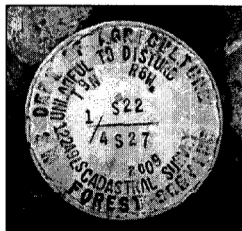
USFS witness posts with decal bears east and west 3 feet dist.



NAD83(cors96) [FOR REFERENCE ONLY!]
 46°30'43.158"N
 112°20'13.921"W

(100) - SURVEY SHOT #

Bearings listed in remonumentation section were measured with GPS and rotated to Geodetic North at the project's Control Point #1, BTs measured with a hand compass, decl. 14° East and chain.



SKETCH OF CORNER

CERTIFICATION
 I, Thomas E. Stark
 CERTIFY THAT THE ABOVE INFORMATION IS TRUE AND CORRECT
 SIGNATURE OF SURVEYOR/CHIEF
 I, Thomas E. Stark
 CERTIFY THAT THIS CORNER MONUMENT CORRECTLY REPRESENTS
 WORK PERFORMED BY ME OR UNDER MY DIRECTION IN
 COMPLIANCE WITH THE SURVEY RECORDATION ACT
 (70-22-101 M.C.A.)
 DATE: 9/2/10
 EMPLOYER: Robert Peccia, Assoc

OFFICE **165832 Fee: \$0.00 Bk Pg**
 WAS FILED **POWELL COUNTY Filed 11/15/2010. At 11:50 AM**
 WAS NO **Return To: FILING**
 BOOK NO _____

SECTION 22
 CORNER RECORD"
 _____, IN

 CORNER THIS SHEET (#100)

COUNTY OFFICIAL
 CROSS INDEX NO. _____ T. _____ R. _____ P.M.,M.
 CROSS INDEX NO. R-15 T. 9N R. 6W P.M.,M.