

CERTIFIED CORNER RECORDATION

Corner S22 | S23 T. _____ R. _____ P.M.,M
S27 | S26 T. 9N R. 6W P.M.,M. POWELL County

1902 GLO Original Survey by Williams Book Vol. 4106 Page 19:

"Set a granite stone 16x10x8 ins 11 ins in the ground for Cors of Secs 22,23,26 and 27 marked with 2 notches on S and 2 notches on E edges from which..." BTs followed

1980 BLM Dependent Resurvey by Baxter. Book Vol. 9292 Page 36:

"The Sec. cor. of secs. 22, 23, 26, and 27, monumented with a granite stone, 12x8x6 ins., firmly set 8 ins. in the ground ... " (with one original bearing tree found.)

"At the corner point

Set an aluminum post....22ins in the ground... from which

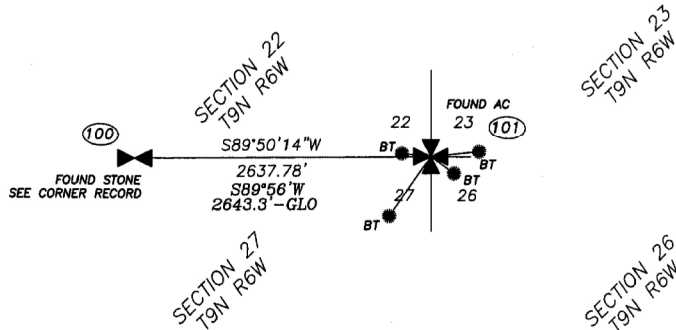
- A pine, 6 ins. diam. bears N 89 3/4° E., 20 lks. dist., mkd T9N R6W S23 BT.
 - A pine, 6 ins. diam. bears S. 49 1/2° E., 11 lks. dist., mkd T9N R6W S26 BT.
 - A pine, 8 ins. diam. bears S. 33° W., 43 lks. dist., mkd. T9N R6W S27 BT.
 - A pine, 6 ins. diam. bears N 83 1/2° W., 3 lks. dist. mkd T9N R6W S22 BT.
- Deposit original stone and a 5 1/2 ft. steel post alongside the aluminum post.

2009 Recovery and Remonumentation by Stark (12249LS):

I find all 1980 Bearing Trees and the aluminum monument set in 1980 in good condition, marked as shown below.

From which:

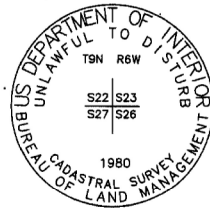
- A 7" diam pine with BT tag bears N 84° E., 13.2 feet dist., mkd T9N R6W S23 BT.
 - A 6" diam pine with BT tag bears S. 54 E. 7.2 feet dist., mkd T9N R6W S26 BT.
 - A 10" diam pine with BT tag bears S. 35° W., 28.4 feet dist., mkd. T9N R6W S27 BT.
 - A 6" diam pine with BT tag bears N 84° W., 1.9 feet dist. mkd T9N R6W S22 BT.
- A metal T-Post bears west 1.5' and a USFS witness posts with decal bears west 3 feet dist.



NAD83(cors96) [FOR REFERENCE ONLY]
 46°30'43.230"N
 112°19'36.220"W

(100) - SURVEY SHOT #

Bearings listed in remonumentation section were measured with GPS and rotated to Geodetic North at the project's Control Point #1, BTs measured with a hand compass, decl. 14' East and chain.



SKETCH OF CORNER

CERTIFICATION

I, Thomas E. Stark
 CERTIFY THAT THE ABOVE INFORMATION IS TRUE AND CORRECT

SIGNATURE OF RECORDING AGENT

I, Thomas E. Stark
 CERTIFY THAT THIS CORNER RECORDATION SOLEMNLY REPRESENTS
 WORK PERFORMED BY ME OR UNDER MY DIRECT SUPERVISION
 IN COMPLIANCE WITH THE 'CORNER RECORDATION ACT'
 (MONTANA CODE ANNOTATED, TITLE 22-101, M.C.A.)

SIGNATURE OF REGISTERED PROFESSIONAL LAND SURVEYOR

DATE: 9/2/2010 REG. NO. 12249LS

EMPLOYER: Robert Peckel & Assoc

OFFICE **165833 Fee: \$0.00 Bk Pg**
 WAS **POWELL COUNTY Filed 11/15/2010. At 11:55 AM**
 WAS **Return To: FILING** *Diane S. Grey, Clk & Rcdr By [Signature]*

CORNER RECORD" _____, IN

SECTION 22

COUNTY OFFICIAL

CROSS INDEX NO. _____ T. _____ R. _____ P.M.,M.
 CROSS INDEX NO. R-17 T. 9N R. 6W P.M.,M.

✠ CORNER THIS SHEET (#101)