

**INSTRUCTIONS**

1. Original and/or subsequent record used to evaluate the corner position.
2. Description of evidence found, note discrepancies in the record, state method of establishing lost or obliterated corners.
3. Description of monument and accessories set to perpetuate the corner position.
4. Sketch of corner, show all pertinent data which can best be shown in a sketch example, corner marking, topography ties, position of accessories, etc.
5. Certification must be signed and sealed by Land Surveyor licensed in the State of Montana.
6. Fill in Cross Index & Section Diagram at bottom of sheet.

**PLSS CORNER RECORD**

Corner W-W1/64 COR. SECS. 6/7 T. 9N. , R. 9W. , P.M.M. POWELL County

1. DESCRIPTION OF RECORD MONUMENT

Corner was not set by the GLO, no previous record.

2. DESCRIPTION OF EVIDENCE FOUND

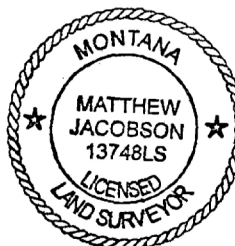
Found no evidence of the corner location.

Calculated corner position in accordance with the BLM Manual of Surveying Instructions.

3. CORNER PERPETUATION

Set a 5/8"x24" rebar with a 1-1/4" yellow plastic cap flush with the ground at the corner position. Cap marked "JACOBSON, 13748LS".

Corner lies approximately 33' South of a barbed wire fence bearing East-West.

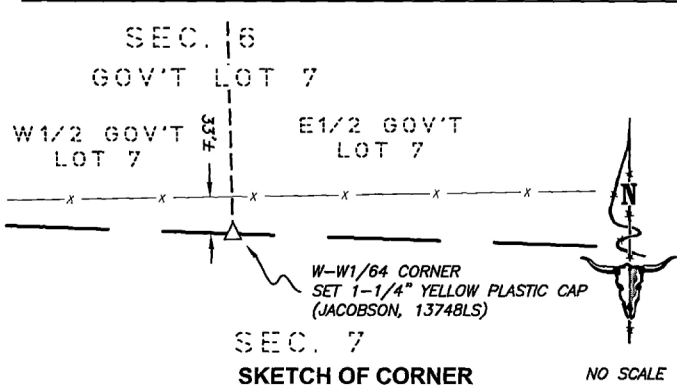


TLI Project #17-4588

For mathematical section breakdown and surveyor's note, see the back of this form.

BASIS OF BEARING: Geodetic North as determined by GPS observation

Approx. Geodetic coordinates (NAD83) - Lat: 46°33'21.2"N Lon: 112°47'03.3"W



**CERTIFICATION**

I, PHIL TOSH  
certify the information shown herein is true and correct.

[Signature]  
Signature of Ground Party Chief

I, MATTHEW JACOBSON  
certify that this Corner Record correctly represents work performed by me or under my direction in compliance with the "Corner Recordation Act" (70-2-101, et. seq., MCA)

[Signature]  
Signature of Surveyor & Seal

Date: 9/8/17 Lic. No. 13748LS

Employer: TERRITORIAL-LANDWORKS, INC.

Office of Clerk and Recorder **175999 Fee: \$0.00 Bk Pg**  
"record" was filed for record **POWELL COUNTY** Filed 9/8/2017 At 10:20 AM  
JODY WALKER, Clk & Rcdr By [Signature]  
Return To: FILING

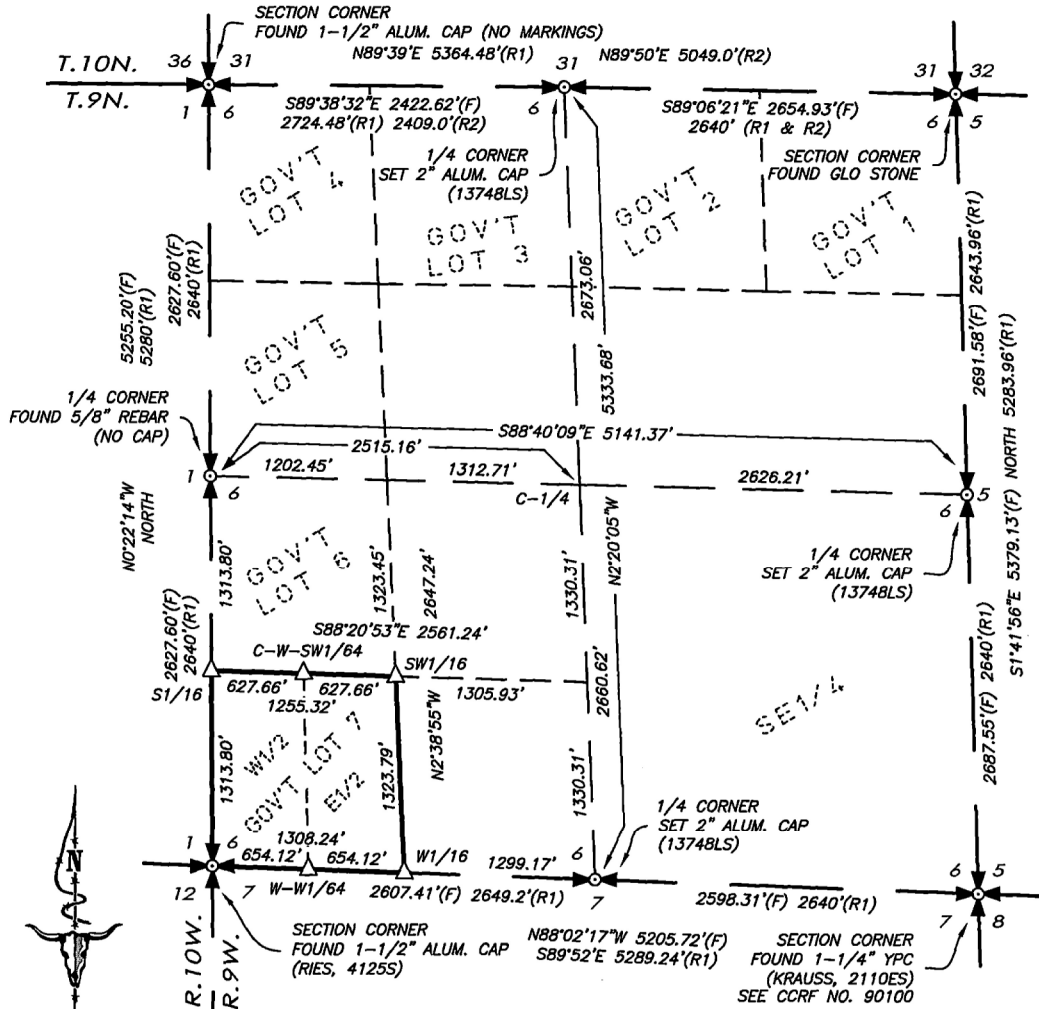
	Sec. 6	
ner		
County Official		

● - Corner this sheet

Cross Index No. E-1.5 T. 9N. R. 9W. , PMM

# SECTION BREAKDOWN

DEPICTING THE MATHEMATICAL BREAKDOWN OF SECTION 6, T.9N., R.9W., P.M.M., POWELL COUNTY, MONTANA



**BASIS OF BEARING**  
 GEODETIC NORTH AS DETERMINED  
 BY GPS OBSERVATION

**SURVEYOR'S NOTE:**

THIS FIRM WAS COMMISSIONED TO PERFORM A RESURVEY AND SUBDIVISION OF SECTION 6 DURING THE MONTH OF JUNE, 2017; FIELD WORK WAS CONDUCTED OVER A FOUR DAY PERIOD. DURING THIS TIME, RESEARCH AT THE POWELL COUNTY COURTHOUSE RECOVERED ONLY ONE CERTIFIED CORNER RECORDATION FORM IN THIS AREA, WHICH PERPETUATED THE SOUTHEAST CORNER OF SECTION 6 (INDEX E-5). THE WEST BOUNDARY OF SAID SECTION 6 APPEARS TO HAVE BEEN SURVEYED AND MONUMENTED, WITH THE SOUTHWEST CORNER OF SECTION 6 BEING A MONUMENT BY SURVEYOR RIES, LICENSE NO. 4125S. A 5/8" REBAR WITH NO CAP WAS FOUND AT THE WEST ONE-QUARTER CORNER, AND A 1-1/2" ALUMINUM CAP WITH NO VISIBLE MARKINGS WAS FOUND AT THE TOWNSHIP CORNER/NORTHWEST SECTION CORNER. THESE THREE FOUND MONUMENTS ARE SITUATED AT LONG-EXISTING FENCE CORNERS AND ARE IN AGREEMENT WITH PLATTED GENERAL LAND OFFICE (GLO) DIMENSIONS, AND ARE ACCEPTED BY THIS SURVEY AS THE BEST AVAILABLE EVIDENCE OF THE CORNER LOCATIONS.

IT SHOULD BE NOTED THAT THE ORIGINAL 1871 SURVEY OF THE NORTH BOUNDARY OF SECTION 6, T.9N., R.9W. SHOWED A DISTANCE OF 81.28 CHAINS; HOWEVER, THE SUBSEQUENT GLO RESURVEY/RETRACEMENT OF A PORTION OF THE NORTH LINE OF T.9N., R.9W. IN 1902 RETURNED A RETRACED DISTANCE ALONG THE NORTH BOUNDARY OF SECTION 6 TO BE 76.50 CHAINS. THE 1902 SURVEY DID NOT FIND ANY EVIDENCE OF THE 1871 CORNERS ALONG THIS LINE AND NEW CORNERS WERE SET IN ACCORDANCE WITH THE RESURVEY DISTANCE. WE WERE ABLE TO RECOVER THE NORTHEAST CORNER OF SECTION 6 AS DESCRIBED IN THE 1902 RECORD, BUT WERE UNSUCCESSFUL IN RECOVERING THE NORTH ONE-QUARTER CORNER AS THE CALCULATED POSITION FALLS ON A SOUTHWESTERLY SLOPE WITH EVIDENCE OF CATTLE/GRAZING ACTIVITY, AS WELL AS AN EXISTING EAST-WEST FENCE LINE. IN ACCORDANCE WITH THE BLM MANUAL OF SURVEYING INSTRUCTIONS, THE PROPER MATHEMATICAL BREAKDOWN OF SECTION 6 UTILIZED THE 1902 RESURVEY DISTANCE OF 76.50 CHAINS ALONG THE NORTH BOUNDARY, INSTEAD OF THE 1871 DISTANCE OF 81.28 CHAINS. THIS WAS FURTHER VERIFIED BY ADDITIONAL CONSULTATION WITH THE BLM CADASTRAL SURVEY DEPARTMENT IN BILLINGS.

**LEGEND**

- △ = SET 5/8"x24" REBAR WITH 1-1/4" YPC (JACOBSON, 13748LS)
- YPC = YELLOW PLASTIC CAP
- CCRF = CERTIFIED CORNER RECORDATION FORM
- GLO = GENERAL LAND OFFICE
- (F) = FOUND THIS SURVEY
- (R1) = RECORD PER 1871 ORIGINAL GLO SURVEY
- (R2) = RECORD PER 1902 GLO RESURVEY

PREPARED BY: **TERRITORIAL LANDWORKS, INC.** TLJ PROJ. #17-4588

CIVIL ENGINEERING • SURVEYING • LAND USE CONSULTING  
[www.TerritorialLandworks.com](http://www.TerritorialLandworks.com)

Phone: 406/721-0142      PO Box 3851  
 Fax: 406/721-9224      Missoula, MT 59806