

INSTRUCTIONS

1. Original and/or subsequent record used to evaluate the corner position.
2. Description of evidence found, note discrepancies in the record, state method of establishing lost or obliterated corners.
3. Description of monument and accessories set to perpetuate the corner position.
4. Sketch of corner, show all pertinent data which can best be shown in a sketch example, corner marking, topography ties, position of accessories, etc.
5. Certification must be signed and sealed by Land Surveyor registered in the State of Montana.
6. Fill in Cross Index & Section Diagram at bottom of sheet.

CERTIFIED CORNER RECORDATION

Corner Sections 16, 17, 20 & 21 T. 9N R. 10W P.M.M. Powell County

ORIGINAL RECORD: (1868 G.L.O.) Set cor to sec 16, 17, 20 and 2, a clay stone 10x10x6 from which:  
 A pine, 8 ins. diam. bears N55°E, 86 lks. dist.  
 A pine, 12 ins. diam. bears N15°W, 57 lks. dist.  
 A pine, 15 ins. diam. bears S76°W, 87 lks. dist.  
 A pine, 10 ins. diam. bears S60°E, 77 lks. dist.

SUBSEQUENT RECORD: None

EVIDENCE FOUND: Found a 30" pine with a face scar on the southwest face, no monument or other accessories found.

PERPETUATION: Set 2 1/2 ins. alum. cap on 3/4 x 30 in. rebar, marked as shown, at record bearing and distance from the original bearing tree. Placed a steel fence post 1 ft. north of monument. ± 40 ft. East of N-S fence line; hung BT tags on a fence post which bears N65°W, 42.5'. Hung a BT tag on a 4" juniper which bears north, 38.4'.

The corner is in a flat creek bottom.

Date of Survey: April, 2008.

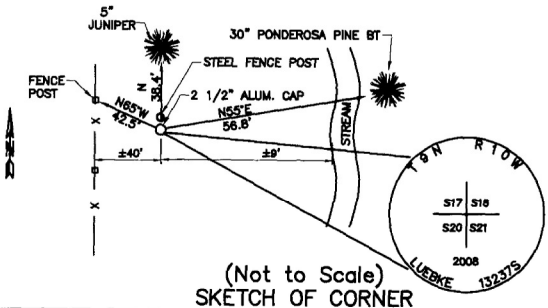
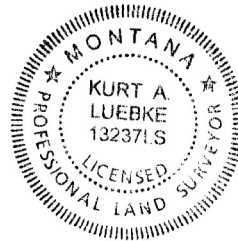
Compass Declination Used: 15°

SEE REVERSE SIDE FOR SECTIONAL DATA



VIEW LOOKING NORTHWEST

NAD 83 coordinates for this corner:  
 Latitude = 46°31'37.83948"N Longitude = 112°52'15.24445"W  
 NOTE: These coordinates are to be used as a search tool only.



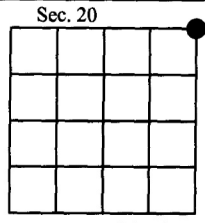
CERTIFICATION

I, John Shirey  
 certify the information shown herein is true and correct.  
 Signature Ground Party Chief

I, Kurt A. Luebke  
 certify that this Corner Record correctly represents work performed by me or under my direction in compliance with the "Corner Recordation Act" (70-22-10, et seq., M.C.A.)  
 Signature of Surveyor & Seal

Date: 6-20-2008 Reg. No. 13237 S  
 Employer: DJ&A P. C.

Office of Clerk and Recorder County of Powell This "corner  
**162227 Fee: \$0.00 Bk Pg**  
 record" was filed **POWELL COUNTY Recorded 6/27/2008 At 11:55 AM**  
 was noted on the **Diane S. Grey, Clk & Rcdr By Jane Buehler**, in  
 book No. \_\_\_\_\_ County Official



Cross Index No. N-9 T. 9N R. 10W PMM

Corner Sec. 16, 17, 20 & 21  
Set 2 1/2" Aluminum Cap

5321.93' N86°59'57"W(SET)  
5277.36' S89°58'W(1868 GLO)

Corner Sec. 15, 16, 21 & 22  
FND 1 1/4" YPC MKD MASTERS 821 S  
AS PER C.C.R. 116233  
By Ray Masters in 1984

20

21

2776.39' N04°14'35"E(SET)  
2640' NORTH(1868 GLO)

1/4 corner Sec. 20 & 21  
FND 2 1/2" ALUMINUM CAP  
MKD 1/4 S21-22  
R. SMITH 12823LS 2005  
NO RECORD FOUND