

Missoula County Control Point Datasheet

Monument Description: 2-1/2" Brass Cap 1956S

Project Name: ALL

Station Description: Section Corner

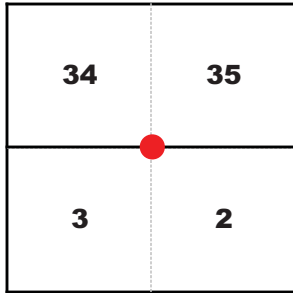
Date Visited: Aug. 14, 2010

Monument Stability: C+ GPS Visibility: A

Observer: CLG - AH

Quad. Name: Florence

T. 11 N. R. 20 W.



NAD 83 (2007) Lat/Long Position

46°39'38.988"N

114°05'15.673"W

NAVD 88 Elevation: 3455.0 sft.

Notes:

T. 10 N. R. 20 W.

Photo of Monument



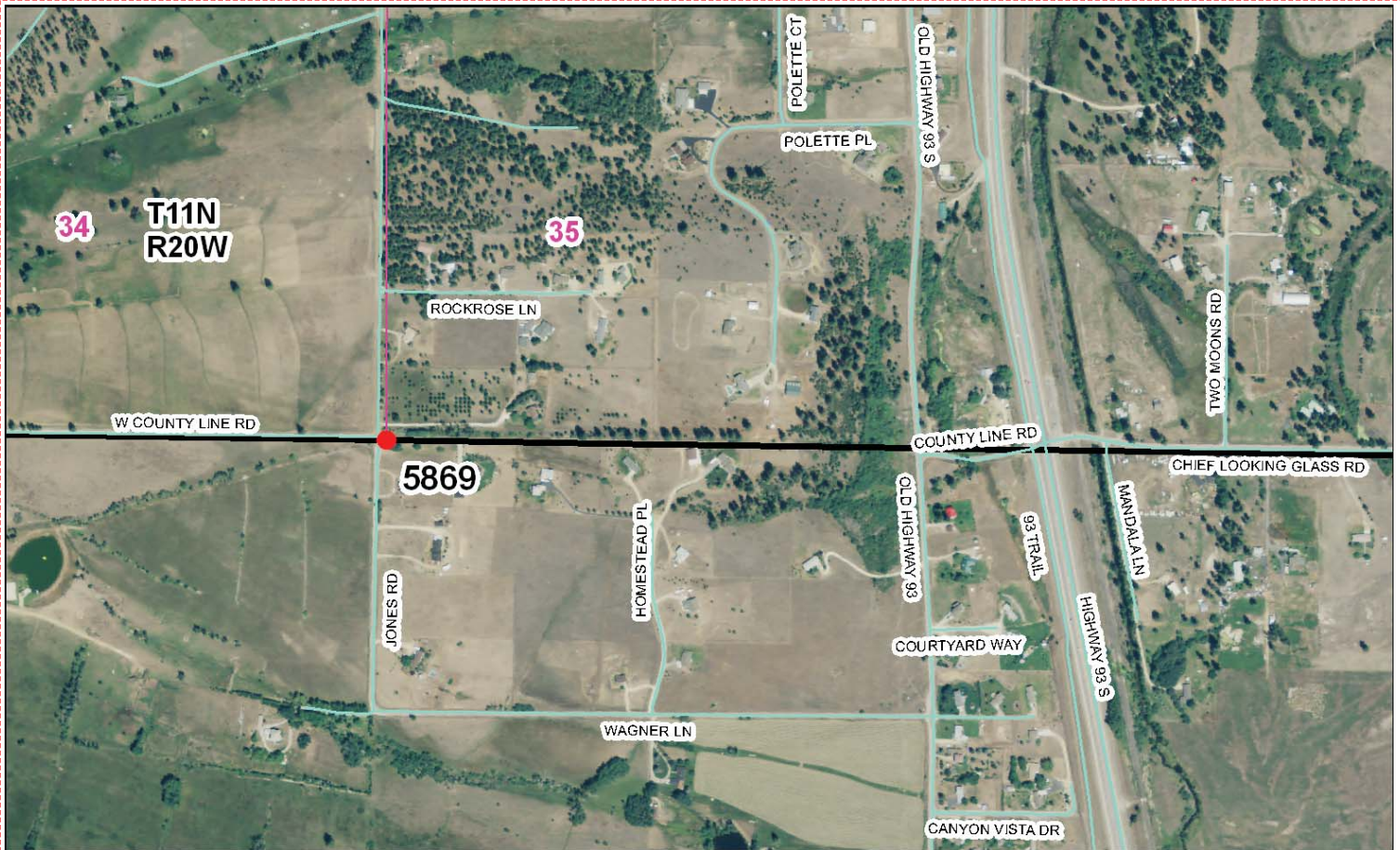
Photo Looking South



Photo Looking West



To Reach: 2wd access.



Map of Area

CERTIFIED CORNER RECORDATION

Corner S34 S35 T 10&11N R 20W P.M.M. Missouri County

INSTRUCTIONS:
 1. Field use or subsequent record used to establish corners.
 2. Description of evidence found, not discrepancies in the record, state method of establishing lost or obliterated corners.
 3. Location of monument and accessories set to perpetuate the corner position.
 4. Sketch of corner, show all pertinent data which can best be shown in a sketchy example, corner marking, including the position of accessories, and accessories to be set by the surveyor.
 5. File in Cross Index & Section Diagram as bottom of sheet.

RECORD: (October, 1872) G.L.O. surveyed by Geo. Irvine and Henry C. Rohleder.
 Set a granite stone 20 x 11 x 9 ins. for corner to sections 2, 3, 34 and 35; raised a mound of stones.
RECORD: (March 1, 1974) Certificate of Survey #217.
RECORD: (December 3, 1974) Corner Recordation Doc. #356680.
RECORD: (December 17, 1974) Certificate of Survey #505.
RECORD: (January 10, 1980) Certificate of Survey #2250.
FOUND: (February 6, 1989) A 2-1/2" brass cap 6" below surface of road, brass cap is on Easterly edge of road, marked as shown, from which:
 A power pole #Mec 10-20-038800 with red head bears S38°W a dist. of 51.93 ft.
 A 12" stump bears S58°E a dist. of 59.6 ft., scribed 1956S.
 A 14" stump bears N77°E a dist. of 23.0 ft., scribed 956S.
ACCESSORIES: (February 6, 1989)
 A power pole #Mec 10-20-038800 with a P-K nail and MARLS sign bears S38°W a dist. of 51.98 ft.
 A power pole with a P-K nail and MARLS sign bears N57°E a dist. of 28.01 ft.
 A P-K nail in edge of railroad tie under 3rd mailbox from the south (there are 14 mailboxes and only one railroad tie), bears N28°W a dist. of 38.40 ft.

CERTIFICATION
 I, Lawrence D. Rosenbaum
 County Clerk
 do hereby certify that the information herein bears true and correct.
 Horace S. Brownlee
 Surveyor
 My name and under my direction is the person who has recorded this record.
 Recording Act: "Registration of Deeds and Mortgages" Chapter 462, R.S.M.
 Title: 3447 Reg. No. 2699 Sec. 200
 Employer: MISSOURIA County

SKETCH OF CORNER

Office of Clerk and Recorder, County of Missouri
 record" was filed for record on March 8, 1989 at 1:48 p.m.
 was noted on the cross-index plat and is recorded in Book No. 290 in Cross Index & Section Diagram #2173
 book No. 290 in Cross Index & Section Diagram #2173
 County Clerk
 Notary Official
 Cross Index No. 2-17 T11N 20W
 8903332
 R-17 T10N R20W

Corner Recordation Form or Other Supporting Document

Point # 5869