

Missoula County Control Point Datasheet

Monument Description: Stone w/ "x" chiseled on top

Project Name: All

Station Description: Section Corner

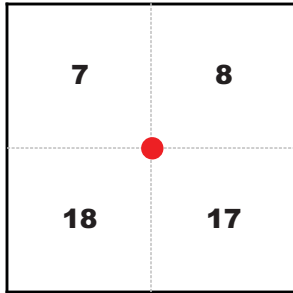
Date Visited: Sept. 14, 2010

Monument Stability: C GPS Visibility: C

Observer: SEN - CLG

Quad. Name: Bonner

T. 12 N. R. 17 W.



NAD 83 (2007) Lat/Long Position

46°48'25.010"N

113°46'37.074"W

NAVD 88 Elevation: 3416.5 sft.

Notes:

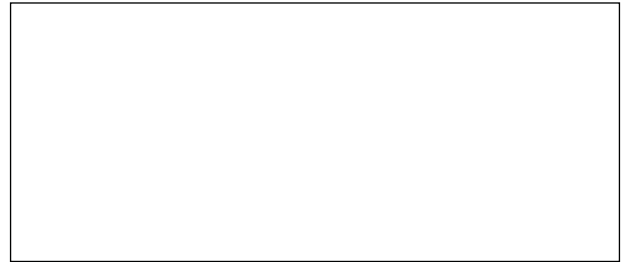


Photo of Monument



Photo Looking North

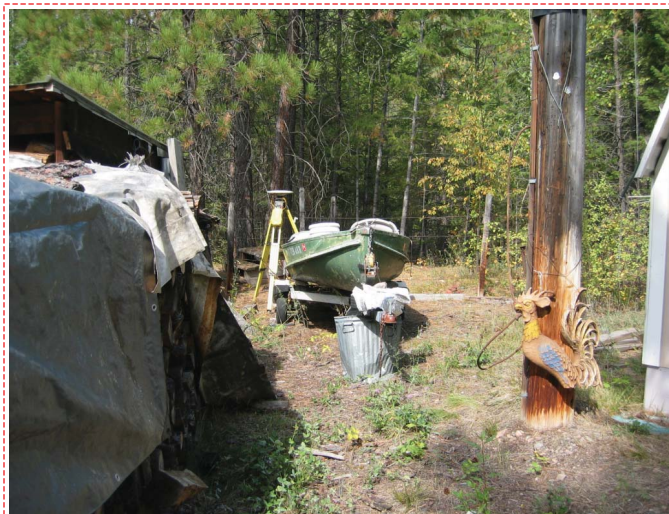


Photo Looking West



To Reach: 2wd access, monument is located in the yard of the property addressed as 16100 Hwy 10 E.



Map of Area

CERTIFIED LAND CORNER RECORDATION

DESCRIPTION OF CORNER EVIDENCE FOUND, AND ORIGINAL RECORD (IF KNOWN)

At the section corner common to Sections 7, 8, 17, 18, T.12 N., R.17 W., P.M.M., Missoula County, Montana, WE FIND:

8"x10" stone, 5" above ground firmly set and properly scribed, mounded with stone, from which a tipped-over stump brs. S.23°W., 13.6 ft.

6.I.O. Record (no date): Set granite stone 14"x8"x8", 9 in. in ground marked 4 notches on S. and 5 notches on E. edges, FROM WHICH:

Pine 13" dia. bears S.45°E., 13 lks. dist. marked T.12N., R.17W., S17 BT
 Pine 16" dia. bears S.49°W., 20 lks. dist. marked T.12N., R.17W., S18 BT
 Fir 24" dia. bears N.28°W., 32 lks. dist. marked T.12N., R.17W., S7 BT

No other trees within limits and raised mound of stone alongside

DESCRIPTION OF MONUMENT AND ACCESSORIES ESTABLISHED TO PERPETUATE THE ORIGINAL LOCATION OF THIS CORNER:

Date of work: 8/14/73

FROM FOUND STONE:

Pine 8" dia. bears S.10°W., 19.7 ft. dist.
 Pine 8" dia. bears S.61°E., 25.3 ft. dist.
 Pine 4" dia. bears N.23°W., 11.9 ft. dist

Variance used: 20°

SKETCH, WITH COURSE AND DISTANCE TO ADJACENT CORNERS IF DETERMINED IN THIS SURVEY. (MAY SKETCH OR PASTE REPRODUCTION ON REVERSE SIDE)

1. Richard A. Ainsworth
 certify that the information shown herein is true and correct.

Signature of Ground Party Chief

Richard A. Ainsworth
 certify that I have carefully performed or reviewed the work done on the diagrammed corner as reported on this recordation form and approve the same.

Signature of Surveyor

DIAGRAM OF CORNER:

2923S
 Registration Number

427829

Office of Clerk and Recorder, County of Missoula
 This "corner record" was filed for record on the 21 day of July 1973, was noted on the cross-index plat and is assigned page No. 1506 in book No. 900A
 ROBERTA FRANK County Clerk
 County official
 Cross Index No. J-5 T.12 N. R. 17 W. P.M.M.
 By: [Signature] 8/21/73

Corner Recordation Form or Other Supporting Document