

Missoula County Control Point Datasheet

Monument Description: 3-1/4" BLM Brass Cap

Project Name: All

Station Description: 1/4 Corner

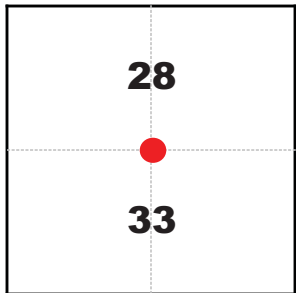
Date Visited: Sept. 13, 2010

Monument Stability: C GPS Visibility: C+

Observer: SEN - CLG

Quad. Name: Clinton

T. 12 N. R. 17 W.



NAD 83 (2007) Lat/Long Position

46°45'41.728"N

113°44'29.949"W

NAVD 88 Elevation: 4998.3 sft.

Notes:



Photo of Monument



Photo Looking East

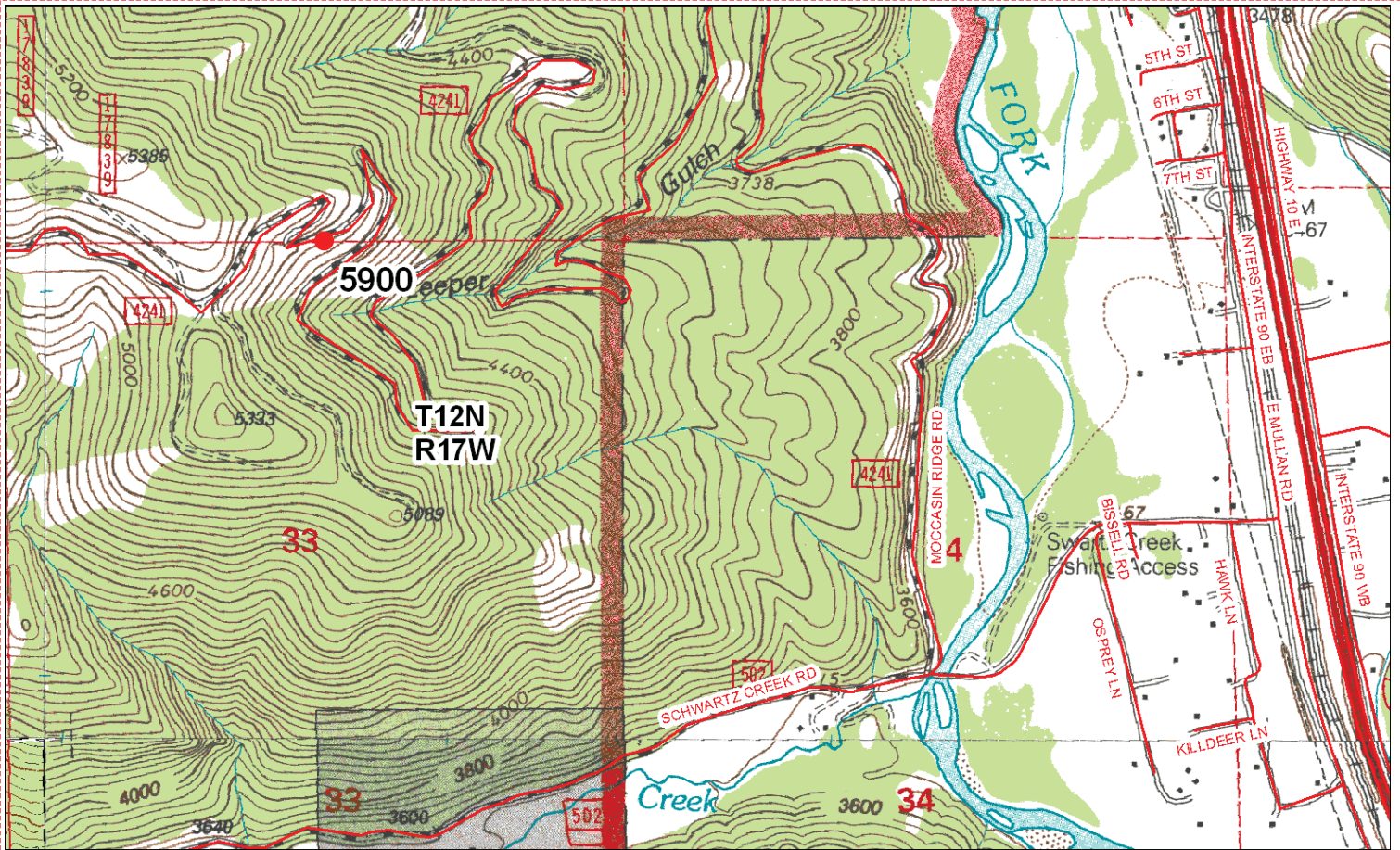


Photo Looking West



Point # 5900

To Reach: 2wd access.



Map of Area

492-0022

CERTIFIED CORNER RECORDATION

Corner # 38 33 T. 12N. R. 17W. P.M.M. MISSOULA County

RECORD: GLO. 1908. Set a porphyry stone, 14x10x6 ins., 10 ins. in the ground, for
 1/4 sec. cor., marked \ddagger on N. face; from which
 A pine, 14 ins. dia., bears North, 54 lks. (35.64 ft.) dist., marked \ddagger S288T.
 A fir, 10 ins. dia., bears S.64°E., 63 lks. (41.58 ft.) dist., marked \ddagger S338T.
 RECORD: BLM, 1973. The 1/4 sec. cor. of secs. 28 and 33, determined from one
 original bearing tree:
 A fir, 16 ins. diam., bears S.64°E., 63 lks. dist., mkd 1/4 S338T.

At the corner point
 Set an iron post, 30 ins. long, 2 1/2 ins. diam., 24 ins. in the ground, with brass
 cap mkd.

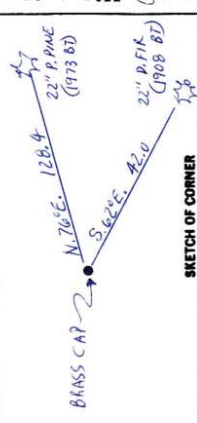


from which a new bearing tree:
 A pine, 14 ins. diam., bears N.77°E., 194 lks. (129.04 ft.) dist., mkd. 1/4 S288T.
 Set a T type iron fence post, 5 1/2 ft. long, 2 1/2 ins. in the ground, alongside and raise a
 flat mound of stone, 4 1/2 ft. base, around the iron post.
 FOUND: 1996. A BLM brass cap 6 ins. above the ground marked as shown above.
 A 22 inch dia. p-pine bears N.76°E., 128.4 ft. scribing grove over.
 A 22 inch dia. D-fir bears S.62°E., 42.0 ft. scribing visible.

PERPETUATION: Placed BT and Land Survey Monument signs.
 Painted the blazes red.
 Decl. 17°E.



CERTIFICATION
 I, EDDO P. FEHLI
 certify the information shown herein to be true and correct.
James A. Flansburg
 Registered Professional Engineer & Land Surveyor
 License No. 8643 S
 State of Montana
 My commission expires on 10-31-99
 My registration expires on 10-31-99
 My registration expires on 10-31-99
 My registration expires on 10-31-99



Office of Clerk and Recorder, County of MISSOULA. This "corner"
 record" was filed for record on NOV. 8, 2000 5:10:51 P.M.
 was noted on the cross-index plat and is assigned page 512
 in Vol. 492 of the Missoula County Clerk, in
 book No. 492 10000
 By James A. Flansburg
 County Official
 My term expires 11-11-11 T. 12N. R. 17W. P.M.M.
 My registration expires on 10-31-99
 My registration expires on 10-31-99
 My registration expires on 10-31-99
 My registration expires on 10-31-99

Sec. 28
 34 35 36 37 38 39 40 41 42 43 44 45 46 47 48 49 50 51 52 53 54 55 56 57 58 59 60 61 62 63 64 65 66 67 68 69 70 71 72 73 74 75 76 77 78 79 80 81 82 83 84 85 86 87 88 89 90 91 92 93 94 95 96 97 98 99 100
 PK 492, PG 0072
 Adopted July 1, 1961, Montana Board of Professional Engineers & Land Surveyors

Corner Recordation Form or Other Supporting Document

Point # 5900