

Missoula County Control Point Datasheet

Monument Description: 3-1/4" Aluminum Cap 10998S

Project Name: All & Hwy 12 Walkway

Station Description: Section Corner

Date Visited: Mar 11, 2010

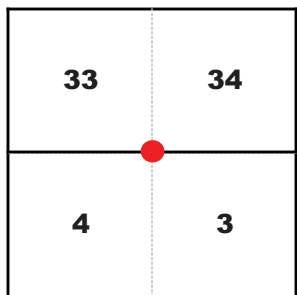
Monument Stability: C

GPS Visibility: B+

Observer: SEN - CLG

Quad. Name: Florence

T. 12 N. R. 20 W.



T. 11 N. R. 20 W.

NAD 83 (2007) Lat/Long Position

46°44'50.929"N

114°06'29.673"W

NAVD 88 Elevation: 3583.1 sft.

Notes:

Photo of Monument



Photo Looking North



Photo Looking East



Photo Looking South



To Reach: 2wd access to within 100 feet of the monument with permission from landowner.



Map of Area

- INSTRUCTIONS**
1. Original and/or subsequent record used to re-establish the corner position.
 2. Description of monument and accessories set to perpetuate the corner position.
 3. Sketch of corner showing all pertinent data which can best be shown in a sketch example, corner marking, accessories, etc.
 4. Sketch of corner showing all pertinent data which can best be shown in a sketch example, corner marking, accessories, etc.
 5. Fill in Cross Index & Section Diagram at bottom of sheet.

CERTIFIED CORNER RECORDATION

Corner Sections 3, 4, 33 & 34 T. 11 & 12 N. R. 20 W. P.M.M. Missoula County, MT

RECORD #1: (October, 1870) G.L.O. survey by William H. Baker
 "Set cor. to sec. 33, 34, 3, 4 a clay slate 17x12x8", with pins, marked stone etc. as per instructions

RECORD #2: (October, 1879) G.L.O. resurvey by James M. Page
 "A point about 200 ft above foot of mountain and set a granite stone, 18x12x5 ins for corner to sec's 3, 4, 33 + 34, marked with 3 notches on the E + W edges and raised a mound of stone alongside, pits impracticable, (before re-establishing this corner I make diligent search but fail to find any trace of sec. cor.)"

RECORD #3: (December, 1950) Dead Exhibit No. 341, by Arthur H. Stanley
 "Original Stone 5"x10"x20" Granite 3 notches on East and 3 notches on West"

RECORD #4: (September, 1976) Corner Recordation Form No. 387132, by Gorden E. Sorenson
 "Found 12"x45" quartzite stone, 10" out of ground, with 3 notches on East and West faces."

FOUND: (March, 2010) A 12"x5"x18" quartzite stone, leaning to the east, with 3 grooves on the east and west faces, in a mound of stone. A barbed wire fence intersection bears S 58° E; 7.1 feet, with fences running north, east and south from the intersection.

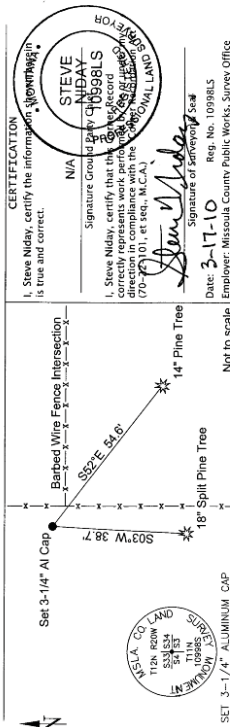
SET: A 3-1/4" aluminum cap on a 1" x 30" drivable shaft, marked as shown. Laid the original stone down on the west side of the aluminum monument, and buried in a mound of stone.

ACCESSORIES: A 14" Ponderosa Pine bears S 52° E; 54.6 feet, scribed RM.

A Ponderosa Pine that is a single tree at the base and splits approximately 3 feet from the ground, with both sides of the tree being 18" in diameter, bears S 03° W; 38.7 feet, scribed RM.

BT tags were affixed to both trees and the scribing was painted orange.

NAD 83 (2007) Lat. Lon. NAD 83 (2007) SPC Intl. Ft. Position by static GPS observations, 46°44'50.9291"N 944460.92 N with ties to MSOL N371, and 114°06'29.6730"W 814569.44 E TRAVELERS REST, using NAVD88 elev. 3583.15 sft Missoula Co. GPS #5814 GEOID 2009 for elevation.



CERTIFICATION
 I, Steve Niday, certify the information above is true and correct.
 Signature of Surveyor: *Steve Niday*
 Date: 3-17-10 Reg. No. 10998LS
 Employer: Missoula County Public Works, Survey Office

Section

33	34
4	3

• corner this sheet

Office of Clerk and Recorder, County of Missoula, Recording Information.
 SET 3-1/4" ALUMINUM CAP
 Not to scale

201095159 B. 556 P. 1234 Pages: 1
 02/17/2010 09:32:56 AM of 06
 Vickie R. Zepher, Missoula County Clerk & Recorder

Cross Index No. Z-13 T. 11 N., R. 20 W. P.M.M.
 A-13 T. 11 N., R. 20 W. P.M.M.

Corner Recordation Form or Other Supporting Document

Point # 5814