

# Missoula County Control Point Datasheet

Monument Description: 5/8" Rebar

Project Name: ALL

Station Description: 1/4 Corner

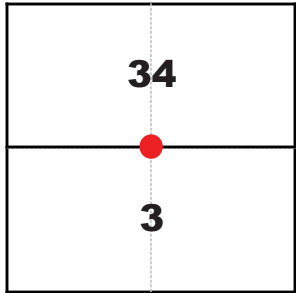
Date Visited: July 28, 2010

Monument Stability: C+      GPS Visibility: B

Observer: SEN - CLG

Quad. Name: Florence

T. 12 N. R. 20 W.



NAD 83 (2007) Lat/Long Position

46°44'50.830"N

114°05'51.531"W

NAVD 88 Elevation: 3216.2 sft.

Notes:

T. 11 N. R. 20 W.

Photo of Monument

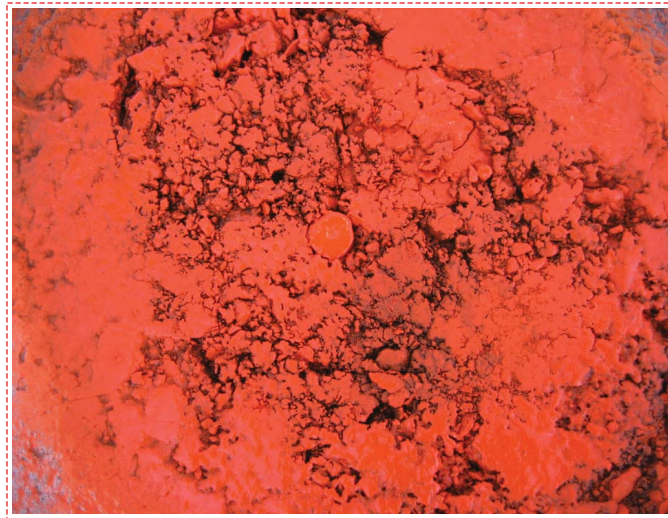


Photo Looking East



Photo Looking South



**To Reach:** 2wd access. The monument is on the northerly edge of the eastbound lane fog line of Mormon Creek Road.



Map of Area

**CERTIFIED LAND CORNER RECORDATION**

DESCRIPTION OF CORNER EVIDENCE FOUND, AND ORIGINAL RECORD (IF KNOWN)

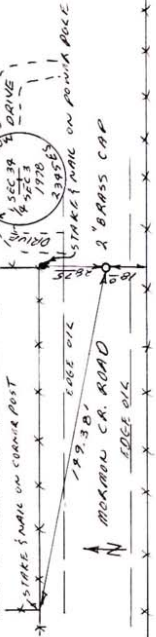
**GLO RECORD:** Set 1/4 corner, a clay slate 12 x 8 x 8 in. with pits marked stone, etc. as per instructions.

**FOUND:** No evidence found.

DESCRIPTION OF MONUMENT AND ACCESSORIES ESTABLISHED TO PERPETUATE THE ORIGINAL LOCATION OF THIS CORNER:

Date of work: 3-22-78

Set: 2" metal pipe w/2" brass cap marked:



SKETCH, WITH COURSE AND DISTANCE TO ADJACENT CORNERS IF DETERMINED IN THIS SURVEY. (MAY SKETCH OR PASTE REPRODUCTION ON REVERSE SIDE.)

See Certificate of Survey #1369 & #981.

Surveyor's Seal

I, Michael J. Smith, certify that the information shown herein is true and correct.

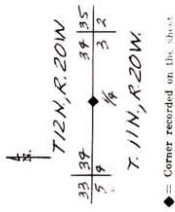
*Michael J. Smith*  
Signature of Ground Party Chief

I, Gordon E. Sorenson, certify that I have carefully performed or reviewed the work done on the diagrammed corner as reported on this recordation form and approve the same.

*Gordon E. Sorenson*  
Signature of Surveyor



DIAGRAM OF CORNER



Registration Number 2345ES

Office of Clerk and Recorder, County of *Missoula*

This "corner record" was filed for record on the *3rd* day of *April*, 19*78*, was noted on the cross-index filed and is assigned page No. *50* in book No. *2-15*

County Official  
Cross Index No. *A-15* T. *12 N* R. *20 W*  
*ROBERTA FRANK, County Clerk*  
*Roberta Frank*  
DEPUTY

14008 1270-01483

Corner Recordation Form or Other Supporting Document