

Missoula County Control Point Datasheet

Monument Description: 2" Aluminum Cap 4468S

Project Name: ALL

Station Description: 1/4 Corner

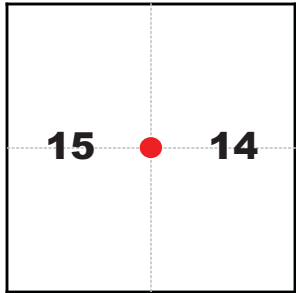
Date Visited: 4/3/08

Monument Stability: C GPS Visibility: A+

Observer: SEN

Quad. Name: Southwest Missoula

T. 12 N. R. 20 W.



NAD 83 (2007) Lat/Long Position

46°47'53.380"N

114°05'13.441"W

NAVD 88 Elevation: 3163.5 sft.

Notes:

Photo of Monument



Photo Looking North



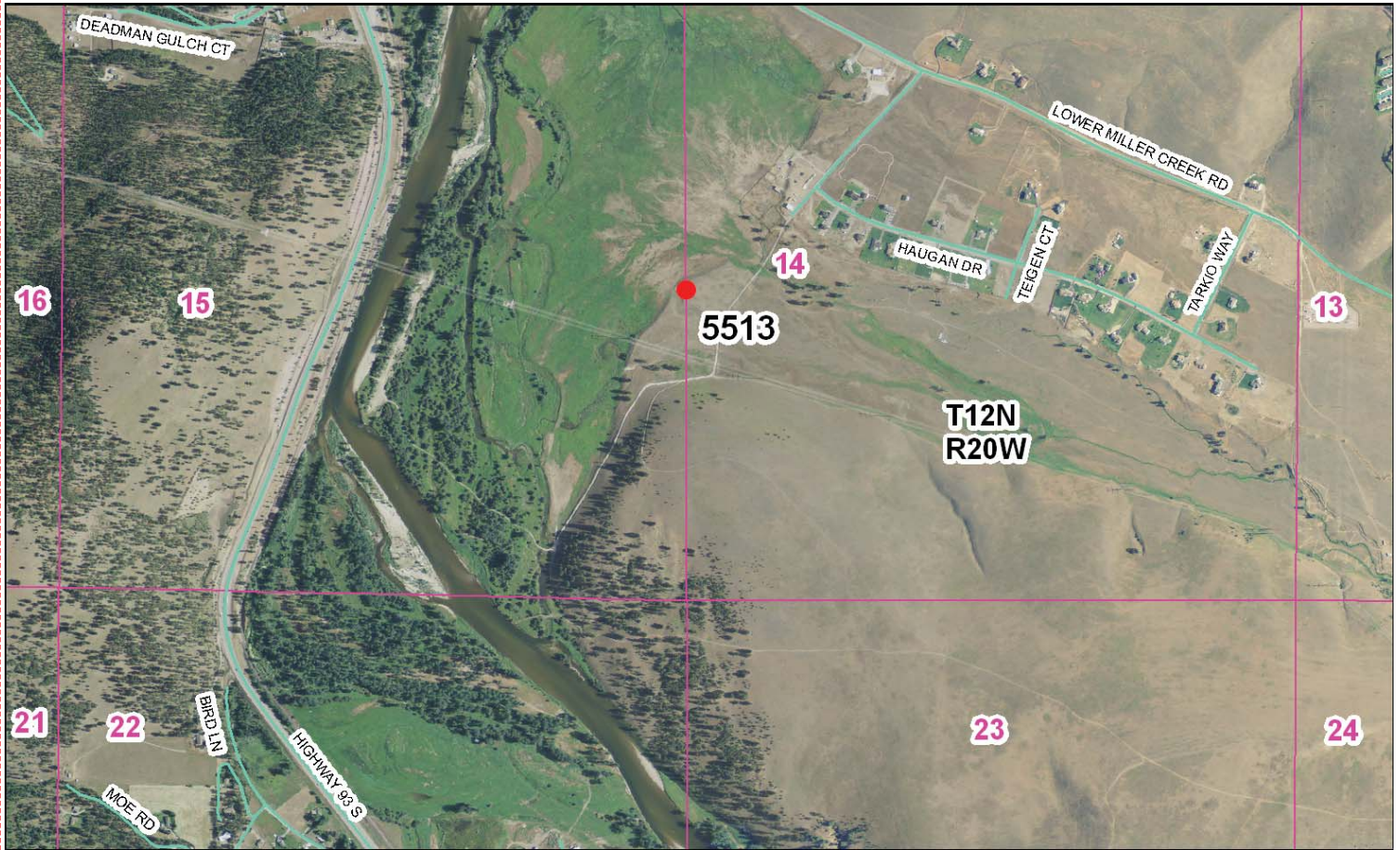
Photo Looking East



Photo Looking South



To Reach: 2wd access through private property, off Haguan Road.



Map of Area

155 REC 1349

INSTRUCTIONS:
 1. Check and/or adjust corner monument.
 2. Insertions of evidence found, and discrepancies in the record, state method of establishing said or obtained.
 3. Description of monument and accessories set to perpetuate the corner position.
 4. Description of monument and accessories set to perpetuate the corner position.
 5. Description of monument and accessories set to perpetuate the corner position.
 6. Description of monument and accessories set to perpetuate the corner position.
 7. Description of monument and accessories set to perpetuate the corner position.
 8. Description of monument and accessories set to perpetuate the corner position.
 9. Description of monument and accessories set to perpetuate the corner position.


CERTIFIED CORNER RECORDATION

Corner WEST 1/4 SECTION 14 T. 12 N. R. 20 W. P.M.M. MISSOULA County

RECORD:
 SLO (1870)
 SET 1/4 cor. a red sandstone 10x9x6 inches

FOUND:
 No evidence of the original 1/4 corner found

SET:
 SET 1/4 CORNER, A 5/8"x24" REBAR WITH 1-1/2" ALUMINUM CAP MARKED AS SHOWN.

CAP IS MARKED:


REFERENCE:
 SEE CERTIFICATE OF SURVEY NO. 4522

95 OCT 27 AM 10 16

CERTIFICATION
 I, PAUL ROSSIGNOL, verify the information shown herein is true and correct.
 Significant Survey Party Chair
 THOMAS P. MCCARTHY
 I certify that the Corner Record correctly represents work performed in accordance with the provisions of the Surveyors and Land Surveyors Act (RS-28-101, M.S., M.C.A.)
 Signature of Surveyor & Seal
 Date: 10/27/95 Reg. No. 44888
 Employer: WGM GROUP

SKETCH OF CORNER
 NOT TO SCALE
 SET STEEL FENCE POST 1" NORTH
 FD. 2-1/2" BRON PIPE WITH NAIL IN CENTER
 FD. 1-1/2" BRASS CAP (ANSWORTH 29235)
 2641.46' N 00°36'06" W 5282.92'
 2641.46'

Office of Clerk and Recorder, County of MISSOULA
 This "corner record" was filed for record on the Oct 27 1995 @ 10:16 AM on 1994.
 was noted on the cross-index plat and is assigned page No. 4559 in book No. 455 ALICOR
 By: [Signature] County Official
 CR-8
 Cross Index No. 9521703 T. 12 N. R. 20 W. PM BK 455, pg 1009

Corner Recordation Form or Other Supporting Document

Point # 5513