

Missoula County Control Point Datasheet

Monument Description: 3-1/4" BLM Brass Cap

Project Name: All

Station Description: Standard 1/4 Corner

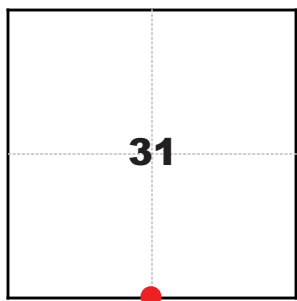
Date Visited: Sept. 7, 2010

Monument Stability: C+ GPS Visibility: C

Observer: SEN - CLG

Quad. Name: Southeast Missoula

T. 13 N. R. 18 W.



NAD 83 (2007) Lat/Long Position

46°50'03.550"N

113°55'24.614"W

NAVD 88 Elevation: 4292.3 sft.

Notes:

Photo of Monument



Photo Looking North

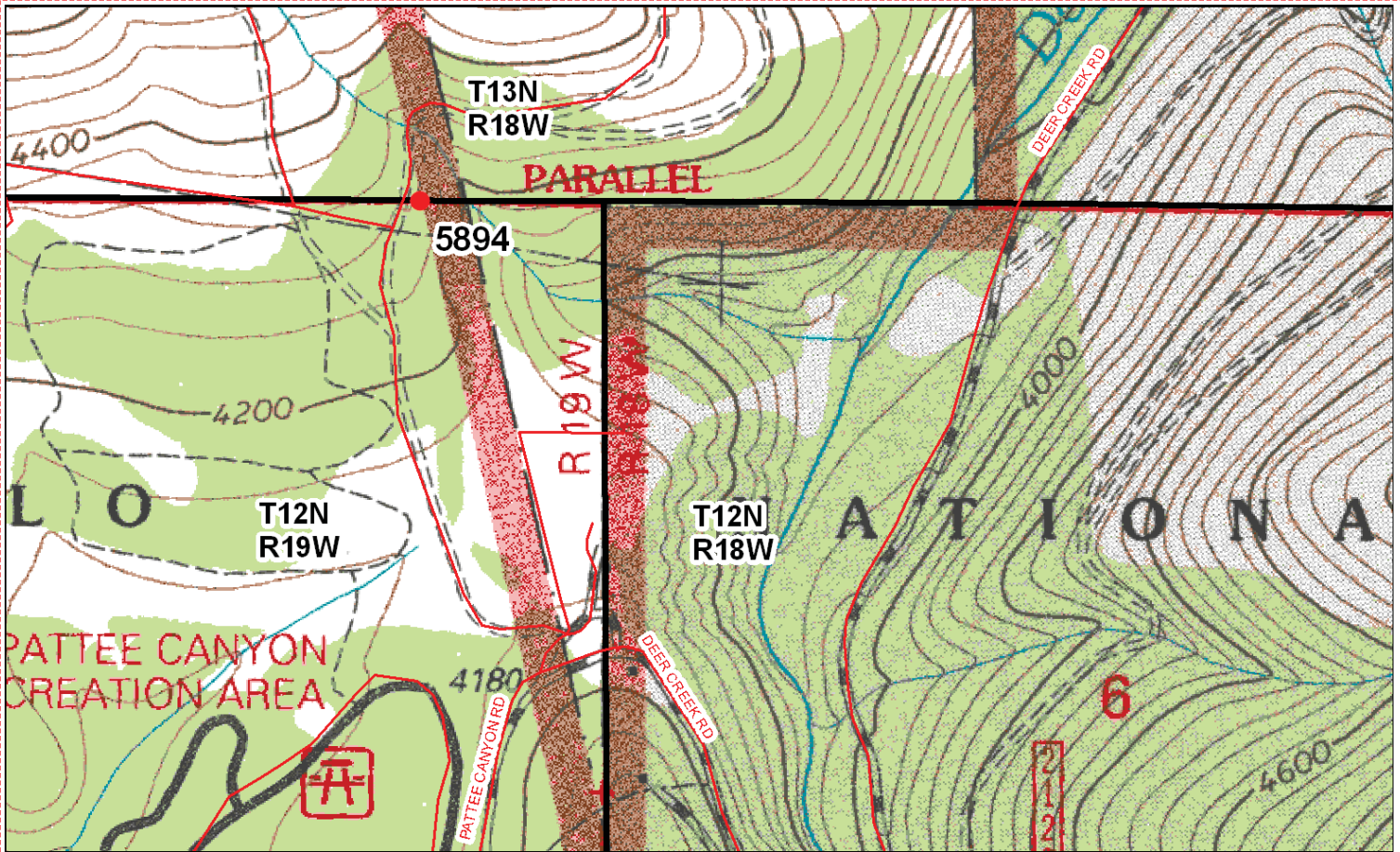


Photo Looking West



Point # 5894

To Reach: 2wd access with Forest Service key.



Map of Area

RI-719C-1

CERTIFIED LAND CORNER RECORDATION
(REFERENCE FSM 7153-53)

DESCRIPTION OF CORNER EVIDENCE FOUND, AND ORIGINAL RECORD (IF KNOWN)
 At the S.E. 1/4 corner, S 1/2 Sec 14, T13N R18W, PMM, Missoula Co, Mont.
 G.L.O. Record (1965): set a white 3" pipe, 24" dia, 16" in ground marked S 1/4 on N face, from which;
 A pine 20" dia, bears N 37° E, 25' dist, marked S 1/4 S 31 BT
 A pine 18" dia, bears N 33° W, 12' dist, marked S 1/4 S 31 BT
 B.C.M. Record (1965): Established corner position by original B.T's
 Set 2 1/2" x 30" iron post, 24" in ground with brass cap, from which;
 A pine 20" dia, bears N 37° E, 25' dist, marked S 1/4 S 31 BT (Revised)
 A pine 20" dia, bears N 35° 3/4 W, 12' dist, marked S 1/4 S 31 BT (Revised)
 Found (1978): 2 1/2" brass cap (B.C.M.), from which;
 A pine 20" dia, bears N 30° 1/2 E, 15.2 ft. dist, with scribing visible
 A pine 20" dia, bears N 33° 1/2 W, 7.9 ft. dist, with scribing visible

DESCRIPTION OF MONUMENT AND ACCESSORIES ESTABLISHED
 TO PERPETUATE THE ORIGINAL LOCATION OF THIS CORNER:
 Found brass cap and orig. B.T's in
 good condition - set no EM's

Date of work: April, 1978



Variance Used: 20"
 SKETCH, WITH COURSE AND DISTANCE TO ADJACENT CORNERS IF DETERMINED IN THIS SURVEY.
 (MAY SKETCH OR PASTE REPRODUCTION ON REVERSE SIDE)

See Certificate of Survey No.

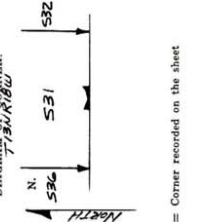


DIAGRAM OF CORNER:
 I, Robert R. Gustine, certify that the information shown herein is true and correct.
 Signature of Ground Party Chief
 I, Robert S. Custer, certify that I have carefully performed or reviewed the work done on the diagrammed corner as reported on this recordation form and approve the same.
 Signature of Surveyor



Registration Number 427834

Office of Clerk and Recorder, County of Missoula, 9:00 A.M.
 This "corner record" was filed for record on the 21st day of July, 1978, was noted on the cross-index plat and is assigned page No. _____, in book No. _____

County Official
 Cross Index No. Z-3 T-3/M R-18/W PMM
 By: ROBERTA FRANK, County Clerk
 502

Corner Recordation Form or Other Supporting Document

Point # 5894