

# Missoula County Control Point Datasheet

Monument Description: Tack in concrete garage floor

Project Name: ALL

Station Description: 1/4 Corner

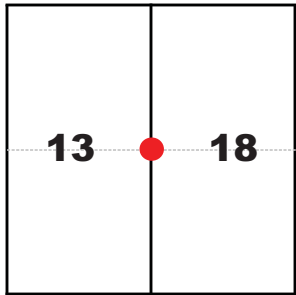
Date Visited: Sep 17, 2010

Monument Stability: D      GPS Visibility: F

Observer: CLG

Quad. Name: Northeast Missoula

T. 13 N.  
R. 19 W. R. 18 W.



### NAD 83 (2007) Lat/Long Position

46°53'06.765"N

113°55'59.779"W

NAVD 88 Elevation: 3227.0 sft.

### Notes:

Tack is located inside the garage of  
4650 Sunnyside Court.

Photo of Monument



Photo Looking Northeast

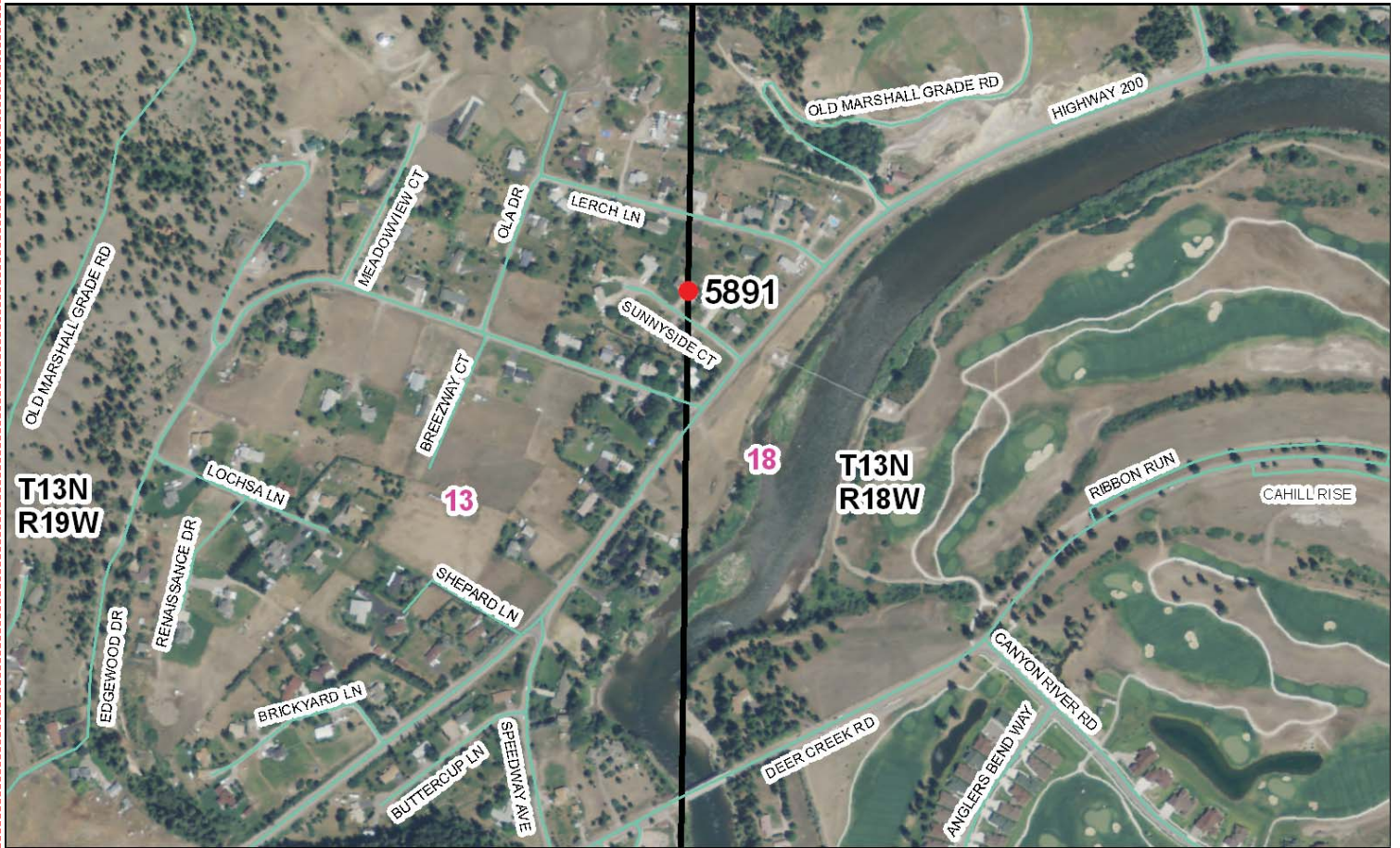


Photo Looking Southwest



Point # 5891

**To Reach:** 2wd access, must gain entry into garage from homeowner.



Map of Area

SCALE 4"=100' 624

**INSTRUCTIONS**  
 1. Use only red ink for subsequent record use in this office.  
 2. Description of evidence found, and discrepancies in the record, state method of establishing, lost or substituted corners.  
 3. Description of monument and accessories set for perpetuity by the corner plat.  
 4. Sketch of corner, show all pertinent data which can be shown in a sketch (for example, corner marking, topography, line position of accessories, etc.).  
 5. Land Surveyor registered in the State of Missouri.  
 6. Fill in Cross Index & Section Diagram at bottom of sheet.

**CERTIFIED CORNER RECORDATION**

Corner 1/4 Sections 13 & 18 T. 13N R. 18 & 19W P.M.M. Missouri County

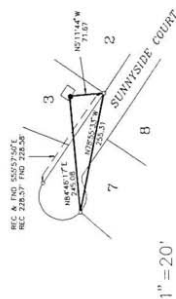
**RECORD #1:** (August, 1870) G.L.O. surveyed by W. H. Baker "set 1/4 sec. cor. a post in mound of earth with pits charred stake etc. as per instructions."

**RECORD #3:** (June 9, 1977) Corner Recordation Document #401907 surveyor - Gordon E. Sorenson. Found a 1 1/2" brass cap marked with a "4" and "1/4 cor.," origin unknown. No accessories established.

**RECORD #2:** (March 27, 1974) C.O.S. 251, surveyor - Gordon E. Sorenson, 1/4 corner not found, set brass cap at single proportion position.

**FOUND:** (June 23, 1992) A 1 1/2" brass cap marked with a cross and "1/4 cor." Used property corners to reference the position. Building construction is expected to remove this monument.

**SET:** (November 3, 1993) A hub tack in lead with magnet in concrete garage floor from references established June 23, 1992. This monument is 2 feet inside the most westerly garage door, approximately 3 feet westerly from the east side of that door. See drawing for references.

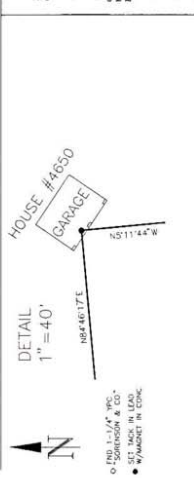


33 DEC 13 AM 9 10

Signature of Surveyor: *Steve E. Niday*  
 Steve E. Niday, Surveyor  
 Missouri State Surveyors Association, No. 1000  
 Missouri, U.S.A.

Signature of Witness: *Horace S. Brown*  
 Horace S. Brown, Surveyor  
 Missouri State Surveyors Association, No. 1000  
 Missouri, U.S.A.

Date: 12/13/93 Reg. No. 59275  
 Missouri County



Office of Clerk and Recorder, County of Missouri. This "corner record" was filed for record on Dec 13, 1993 at 9:10 AM, in book No. 400 Plat 250 Ka-100-624, in County, Official.  
 Clerk: Mo Fee  
 Cross Index No. 9330038 L-1 T. 13N R. 18W P.M.M. L-25 T13N R19W  
 • corner this sheet 400-624

Corner Recordation Form or Other Supporting Document

Point # 5891