

Missoula County Control Point Datasheet

Monument Description: 1-1/2" Brass Cap 2923S

Project Name: O'Brien

Station Description: Section Corner

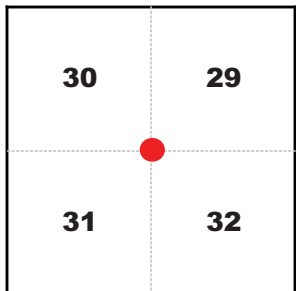
Date Visited: Jan. 10, 2006

Monument Stability: C GPS Visibility: C

Observer: SEN

Quad. Name: Blue Mountain

T. 13 N. R. 20 W.



NAD 83 (2007) Lat/Long Position

46°50'54.304"N

114°09'56.637"W

NAVD 88 Elevation: 3822.8 sft.

Notes:

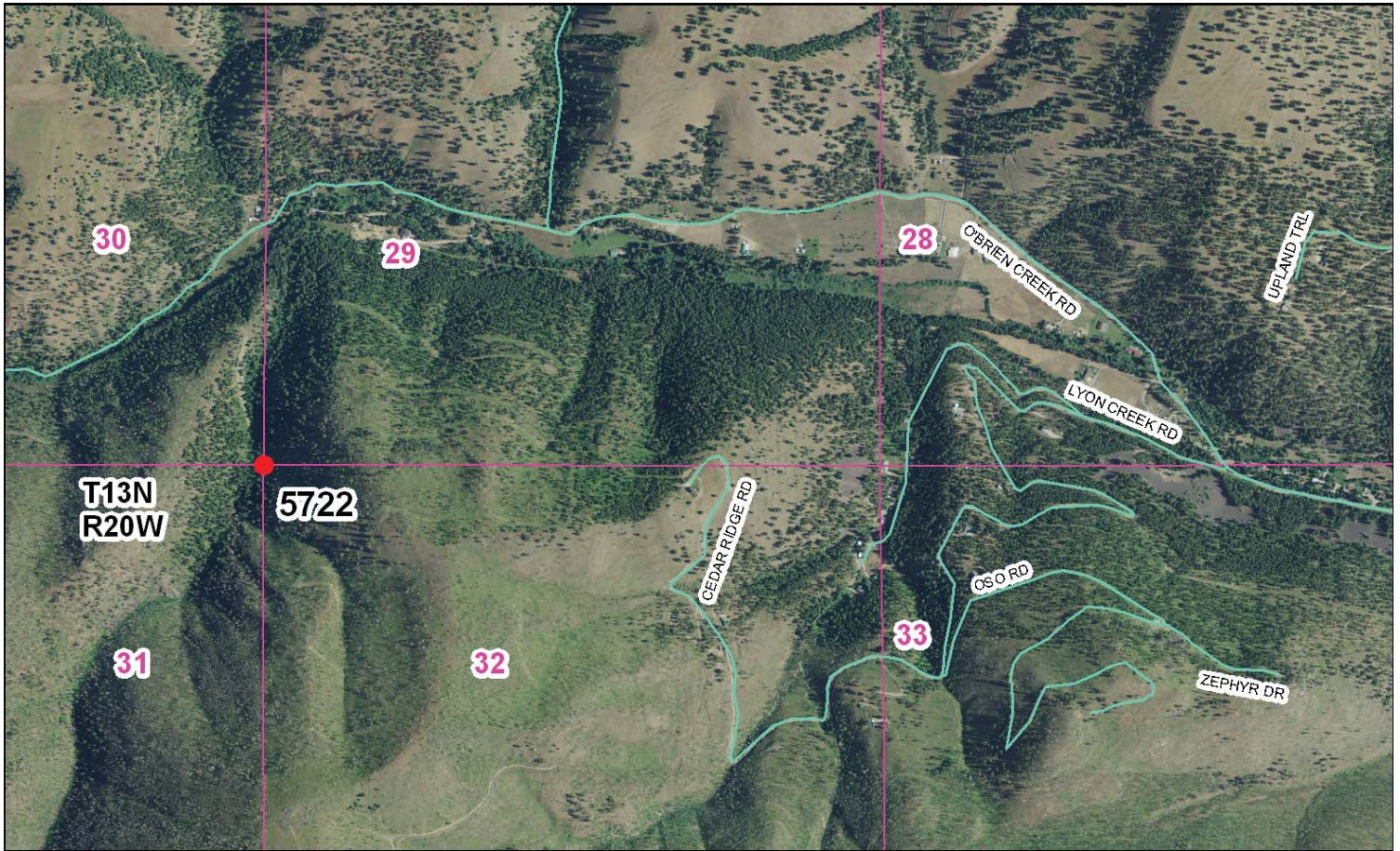
Photo of Monument



Photo Looking



To Reach: 2wd access to within 1/2 mile from road.



Map of Area

- INSTRUCTIONS**
1. Original and/or subsequent record used to evaluate the corner position.
 2. Description of evidence found, note discrepancies in the record, state method of establishing lost or obliterated corners.
 3. Sketch of corner, show all pertinent data which can best be shown in a sketch; example, corner markings, accessions, etc.
 4. Sketch of corner, show all pertinent data which can best be shown in a sketch; example, corner markings, accessions, etc.
 5. Certification must be signed and sealed by land surveyor registered in the State of Montana.
 6. Fill in Cross Index & Section Diagram at bottom of sheet.

CERTIFIED CORNER RECORDATION

Section Corner 29-30-31-32 T. 13 N. R. 20 W. P.M.M. Missoula County, Montana

RECORD #1: (September 6, 1901) G. L. O. survey by Edgar Ford
 "Set a slate stone, 24x15x10 ins., 18 ins. in the ground for Cor. of Secs. 29, 30, 31 & 32 marked with 1 notch on S. and 5 notches on E. edges; from which
 A pine, 6 ins. diam., bears N. 88° E., 22 lks. dist., marked T. 13 N., R. 20 W., S. 29, B.T.
 A pine, 6 ins. diam., bears S. 20° E., 25 lks. dist., marked T. 13 N., R. 20 W., S. 32, B.T.
 A pine, 6 ins. diam., bears S. 33° W., 13 lks. dist., marked T. 13 N., R. 20 W., S. 31, B.T.
 A pine, 7 ins. diam., bears N. 75° W., 31 lks. dist., marked T. 13 N., R. 20 W., S. 30, B.T.

RECORD #2: (January 17, 1975) Corner Recordation Document #358328 surveyor Richard A. Answorth, 2923S. He found two bearing trees on the ground, established the corner from the root crowns, and set a 1-1/2" brass cap and four new bearing trees.

FOUND: (January 10, 2006) I found the brass cap and evidence of Answorth's four bearing trees.

SET: (January 10, 2006) I left the brass cap in place and established one new bearing tree. An 11" Douglas Fir, scribed RM, bears S75°E, 14.6 feet, added location tag.

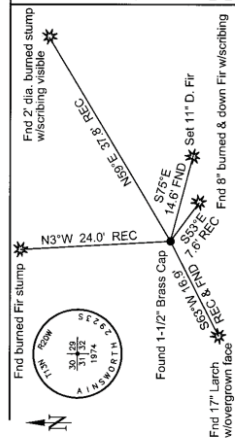
NAD 83 (1999) Lat. Lon. NAD 83 (1999) SPC Intl. Ft.
 46°50'54.304" N 982039.8 N
 114°09'56.637" W 802380.8 E
 NAVD88 elevation 3823' Missoula Co. GPS #5722

Positional information determined by static GPS observations, with ties to the NRSRS, using GEOID 2003 for elevation.

CERTIFICATION
 I, Steve Niday, certify the information on this record is true and correct.

N/A
 Signature Ground by CID09381S
 I, Steve Niday, certify that this record correctly represents work performed by me or under my direct supervision in compliance with the provisions of the Montana Uniform Land Use Review Act, M.C.A. 170-22-101, et seq., M.C.A.

Signature of Surveyor
 Date: 2-21-08 Reg. No. 10968LS
 Employer: Missoula County Public Works, Surveyor's Office



Office of Clerk and Recorder, County of Missoula, Recording Information.

Section	
30	29
31	32

• corner this sheet

200803734
 Missoula County Vickie R Zeller CR BK-613 Pg-829

Cross Index No. V-5 T. 13 N., R. 20 W. P.M..M.

Corner Recordation Form or Other Supporting Document