

# Missoula County Control Point Datasheet

Monument Description: 3" Aluminum Cap 2923S

Project Name: ALL

Station Description: Corner to Sections 20 and 29 Only

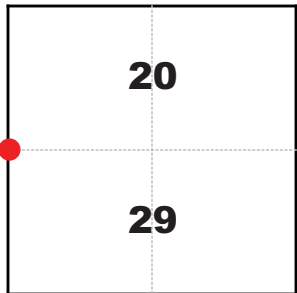
Date Visited: June 29, 2010

Monument Stability: C      GPS Visibility: C+

Observer: SEN - CLG

Quad. Name: Blue Mountain

T. 13 N. R. 20 W.



### NAD 83 (2007) Lat/Long Position

46°51'47.229"N

114°09'57.084"W

NAVD 88 Elevation: 4051.3 sft.

Notes:

Photo of Monument



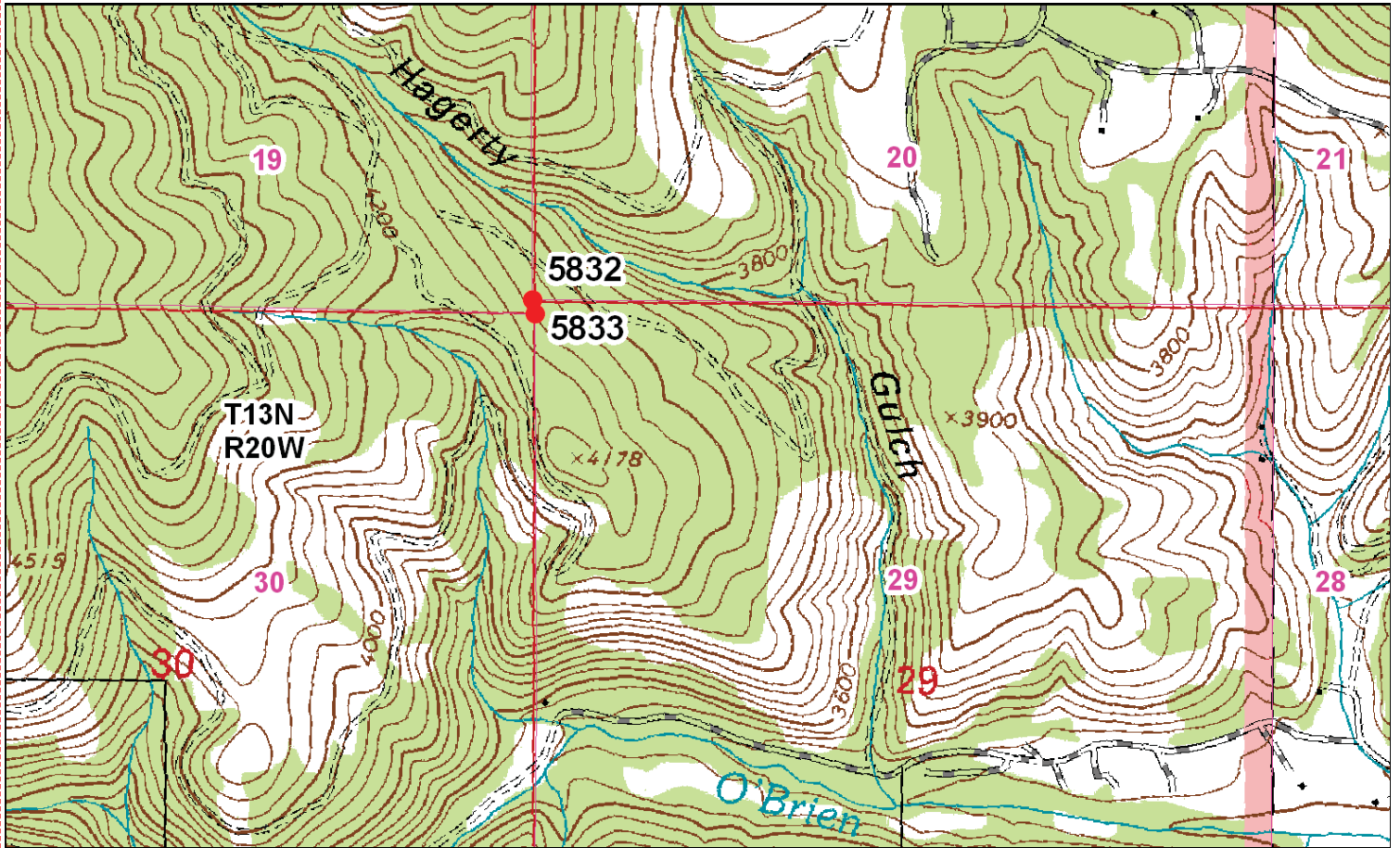
Photo Looking East



Photo Looking South



**To Reach:** 2wd, need key to gate at bottom of Hagerty Gulch.



Map of Area

**CERTIFIED LAND CORNER RECORDATION**

**DESCRIPTION OF CORNER EVIDENCE FOUND, AND ORIGINAL RECORD (IF KNOWN)**

At the Section corner common to Sections 19, 20, and 29, Township 13 North, Range 20 West, Missoula County, Montana.

**RECORD:** Set a shale stone 15"x12"x7", 10" in the ground for Cor. of Secs. 20 and 29 marked with 2 notches on S. and 5 notches on E. From which:  
 A Pine 30" bears N.55°E., 33.1 links  
 A Pine 36" bears S.01°E., 92.1 links

**WE FIND:** Both original BT stumps, depression of original stone position and original stone out of place.

**DESCRIPTION OF MONUMENT AND ACCESSORIES ESTABLISHED TO PERPETUATE THE ORIGINAL LOCATION OF THIS CORNER:**

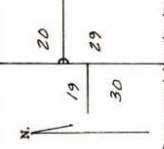
WE ESTABLISH this corner by use of original evidence.  
 TO PERPETUATE this corner we set a 2"x30" pipe with 3" aluminum cap buried original stone along north side of monument and establish the following reference monuments:  
 A 16" Fir bears S.79°00'E., 32.0 feet  
 A 14" Pine bears N.56°00'E., 11.7 feet  
 Variance used E-.20"

Date of work... 5/1/74

**SKETCH, WITH COURSE AND DISTANCE TO ADJACENT CORNERS IF DETERMINED IN THIS SURVEY. (MAY BE MADE ON PASTE REPRODUCTION ON REVERSE SIDE.)**



**DIAGRAM OF CORNER:**



GREGORY S. MARTINSEN 41245  
 I, certify that the information shown herein is true and correct.

*Richard A. Ainsworth*  
 Signature of Grand Party Chief  
 RICHARD A. AINSWORTH

I, certify that I have carefully performed or reviewed the work done on the diagrammed corner as reported on this recordation form and approve the same.

*Robert E. Arpiss*  
 Signature of Surveyor  
 29235  
 Registration Number



Office of Clerk and Recorder, County of Missoula at 8:18 A.M.  
 This "corner record" was filed for record on the 13 day of Aug, 1974, was not done on the cross-index plat and is assigned page No. 504 in book No. R5, T. 13N, R. 20W Mer.

FORM 130-4/48  
 ROBERT E. ARPIS, County Clerk  
 By Mary Shalaby, COUNTY CLERK

**Corner Recordation Form or Other Supporting Document**