

INSTRUCTIONS

1. Original and/or subsequent record used to evaluate the corner position.
2. Description of evidence found, note discrepancies in the record, state method of establishing lost or obliterated corners.
3. Description of monument and accessories set to perpetuate the corner position.
4. Sketch of corner, show all pertinent data which can best be shown in a sketch example, corner marking, topography ties, position of accessories, etc.
5. Certification must be signed and sealed by Land Surveyor registered in the State of Montana.
6. Fill in Cross Index & Section Diagram at bottom of sheet.

CERTIFIED CORNER RECORDATION

1/4 Corner SECTIONS 16 & 17 T. 14N R. 10W P.M.M. Powell County

ORIGINAL RECORD: (1905 GLO) "Set a shalestone, 15x10x8 ins., 10 ins. in the ground, for 1/4 sec. cor., marked 1/4 on W. face; from which:

- A fir, 10 ins. dia., bears N.68°30'E., 24 lks. dist., marked 1/4 S 16 B T.
- A fir, 24 ins. dia., bears S.20°W., 24 lks. dist., marked 1/4 S 17 B T."

EVIDENCE FOUND: Found degraded stone monument, from which:

A 17" douglas fir bears N68°E, a distance of 14.9 feet, scribed " 1/4 S 16 B T"

PERPETUATION: Set a 3/4" diameter x 30" rebar with 3/4" aluminum cap, ringed with rocks, in location of existing stone monument, marked as shown below. Buried said stone north of new monument, from which established the following new accessory:

A 7" Douglas fir bears N22°W, a distance of 12.2 feet, scribed " 1/4 S 17 B T"

Set a Steel post with Land Survey Monument decal north of monument, 1 feet distant.

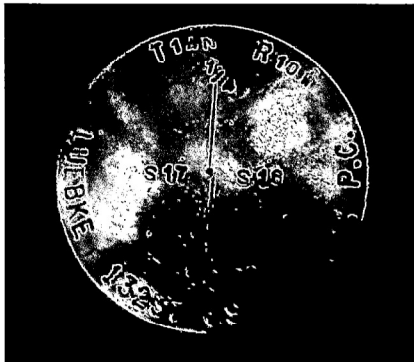
All BT's have BT signs, snow blazes and red painted rings.

Corner lies on a 35% southeast facing slope.

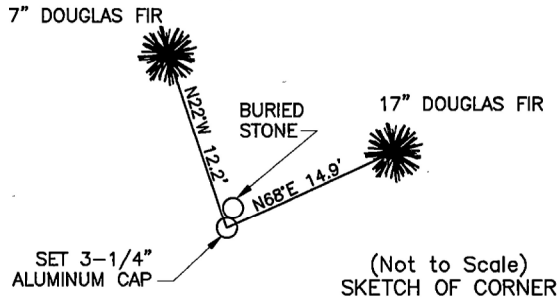
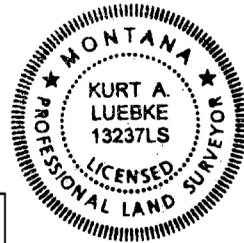
Date of Survey: July 2014

Compass declination 14°

SEE BACK OF FORM FOR SECTION INFORMATION

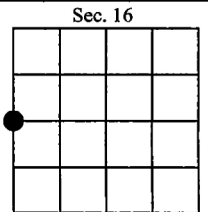


NAD 83 coordinates for this corner:
 Latitude = 46°58'10.212"N Longitude = 112°52'49.385"W
 NOTE: These coordinates are to be used as a search tool only.



CERTIFICATION
 I, Jeff Cyr, PLS (13103LS)
 certify the information shown herein is true and correct.
 Signature of Round Party Chief
 I, Kurt Luebke
 certify that this Corner Record correctly represents work performed by me or under my direction in compliance with the "Corner Recordation Act" (70-27-101, et seq., M.C.A.)
 Signature of Surveyor & Seal
 Date: November, 2014 Reg. No. 13237
 Employer: DJ&A P. C.



Office of Clerk and Recorder, County of _____ This is _____ corner
172090 Fee: \$0.00 Bk Pg
 recd **POWELL COUNTY Filed 11/26/2014 At 11:30 AM**
 was **Diane S. Grey, Clk & Rcdr By [Signature]** n
 Return To: **FILING**
 boc _____
 County Official _____



• - corner this sheet

Cross Index No. L-9 T. 14N R. 10W PMM

LEGEND

-  SET 3/4"x30" REBAR WITH 3-1/4" A.C. MK'D LUEBKE 13237LS
-  SET 3/4"x30" REBAR WITH 3-1/4" A.C. MK'D LUEBKE 13237LS
- (F) FOUND
- (R) RECORD - GLO

FOUND 3/4" BLM BRASS CAP

40ch(R)
2642.24(F)
N070.41W
N071.35"W

FOUND 3/4" BLM BRASS CAP

N80°00'W, 39.95ch(R)
N89°07'13"E, 2634.73(F)

8 9
17 16
S89°51'00"E, 39.95ch(R)
N89°37'25"E, 2673.89(F)

SECTION 16 T.14N., R.10W., PMM


NOT TO SCALE

