

INSTRUCTIONS

1. Original and/or subsequent record used to evaluate the corner position.
2. Description of evidence found, note discrepancies in the record, state method of establishing lost or obliterated corners.
3. Description of monument and accessories set to perpetuate the corner position.
4. Sketch of corner, show all pertinent data which can best be shown in a sketch example, corner marking, topography ties, position of accessories, etc.
5. Certification must be signed and sealed by Land Surveyor registered in the State of Montana.
6. Fill in Cross Index & Section Diagram at bottom of sheet.

CERTIFIED CORNER RECORDATION

Section Corner SECTIONS 8, 9, 16, & 17 T. 14N R. 10W P.M.M. Powell County

ORIGINAL RECORD: (1905 GLO) "Set a fir post 3 feet long 4 in. sq., 24 ins. in the ground, for cor. of secs. 8, 9, 16, and 17, marked T 14 N S 9 on NE., R 10 W S 16 on SE., S 17 on SW., and S 8 on NW. face, with 4 notches on S. and E. edges; from which:

- A fir, 10 ins. dia., bears N.84°40'E., 93 lks. dist., marked T 14 N R 10 W S 9 BT.
- A fir, 7 ins. dia., bears S.52°40'E., 8 lks. dist., marked T 14 N R 10 W S 16 BT.
- A fir, 9 ins. dia., bears S.62°W., 6 lks. dist., marked T 14 N R 10 W S 17 BT.
- A fir, 9 ins. dia., bears N.61°20'W., 9 lks. dist., marked T 14 N R 10 W S 8 BT."

EVIDENCE FOUND: No monument was found; found section 9 bearing tree on ground next to stump. Found section 8 bearing tree up rooted, unable to determine location. Found stump hole for section 16 bearing tree.

PERPETUATION: Set a 3/4" diameter x 30" rebar with 3/4" aluminum cap marked as shown below, the corner was reestablished using the intersection of the location of stump from section 9 bearing tree and stump hole from section 16 bearing tree, from which establish the following new accessories:

- A 7" fir bears N6°E, a distance of 46.1 feet, scribed "S9 BT"
- A 6" fir bears S62°E, a distance of 30.7 feet, scribed "S16 BT"
- An 8" lodgepole pine bears S68°W, a distance of 14.2 feet, scribed "S17 BT"
- A 9" fir bears N82°W, a distance of 43.4 feet, scribed "S8 BT"

Set a Steel post with Land Survey Monument decal north of monument, 1 feet distant.

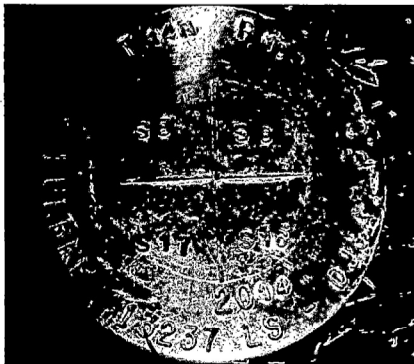
All BT's have BT signs, snow blazes and red painted rings.

Corner lies on a 20% north facing slope.

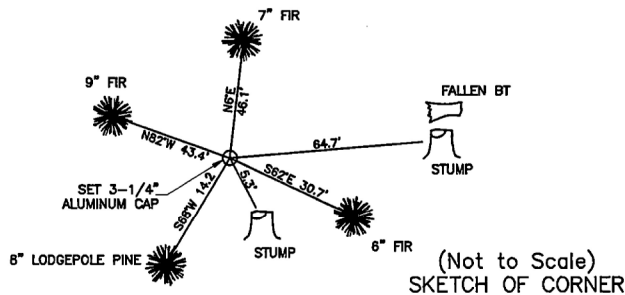
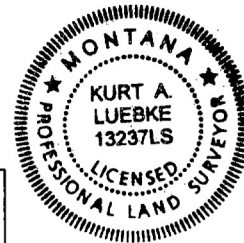
Date of Survey: July 2014

Compass declination 14°

SEE BACK OF FORM FOR SECTION INFORMATION



NAD 83 coordinates for this corner:
 Latitude = 46°58'36.595"N Longitude = 112°52'49.776"W
 NOTE: These coordinates are to be used as a search tool only.



CERTIFICATION
 I, Jeff Cyr, PLS (13103LS)
 certify the information shown herein is true and correct.
 Signature of Found Party Chief
 I, Kurt Luebke
 certify that this Corner Record correctly represents work performed by me or under my direction in compliance with the "Corner Recordation Act" (70-22-101, et seq. M.C.A.)
 Signature of Surveyor & Seal
 Date: November 17, 2014 Reg. No. 13237
 Employer: DJ&A P. C.



Office of Clerk and Recorder, County of _____ This "corner" rec **172092 Fee: \$0.00 Bk Pg** POWELL COUNTY Filed 11/26/2014, At 11:40 AM wa Diane S. Grey, Clk & Rcdr By Diane S. Grey in Return To: FILING bot

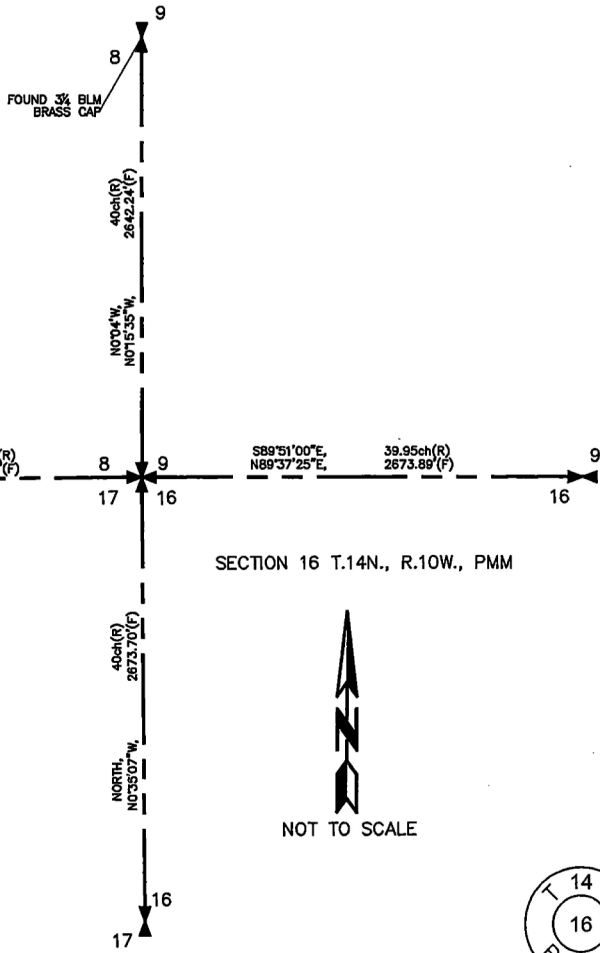
Sec. 16

• - corner this sheet

Cross Index No. J-9 T. 14N R. 10W PMM

LEGEND

-  SET 3/4"x30" REBAR WITH 3-1/4" A.C. MK'D LUEBKE 13237LS
-  SET 3/4"x30" REBAR WITH 3-1/4" A.C. MK'D LUEBKE 13237LS
- (F) FOUND
- (R) RECORD - GLO



SECTION 16 T.14N., R.10W., PMM

