

Missoula County Control Point Datasheet

Monument Description: 3-1/4" Aluminum Cap 10998S

Project Name: All

Station Description: 1/4 Corner

Date Visited: _____

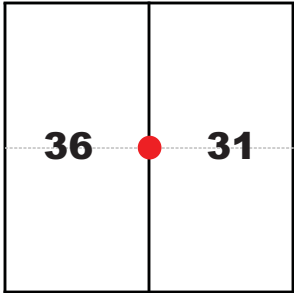
Monument Stability: C+

GPS Visibility: A+

Observer: SEN - CLG

Quad. Name: Greenough

T. 14 N.
R. 15 W. R. 14 W.



NAD 83 (2007) Lat/Long Position

46°55'26.523"N

113°25'45.650"W

NAVD 88 Elevation: 3720.5 sft.

Notes:

Photo of Monument



Photo Looking North

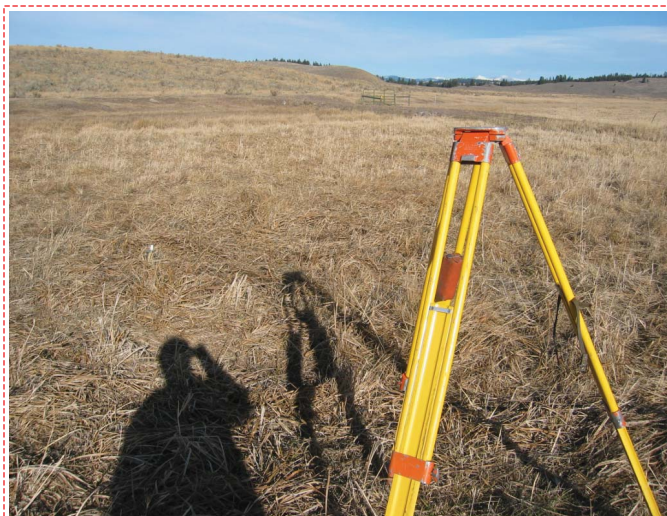
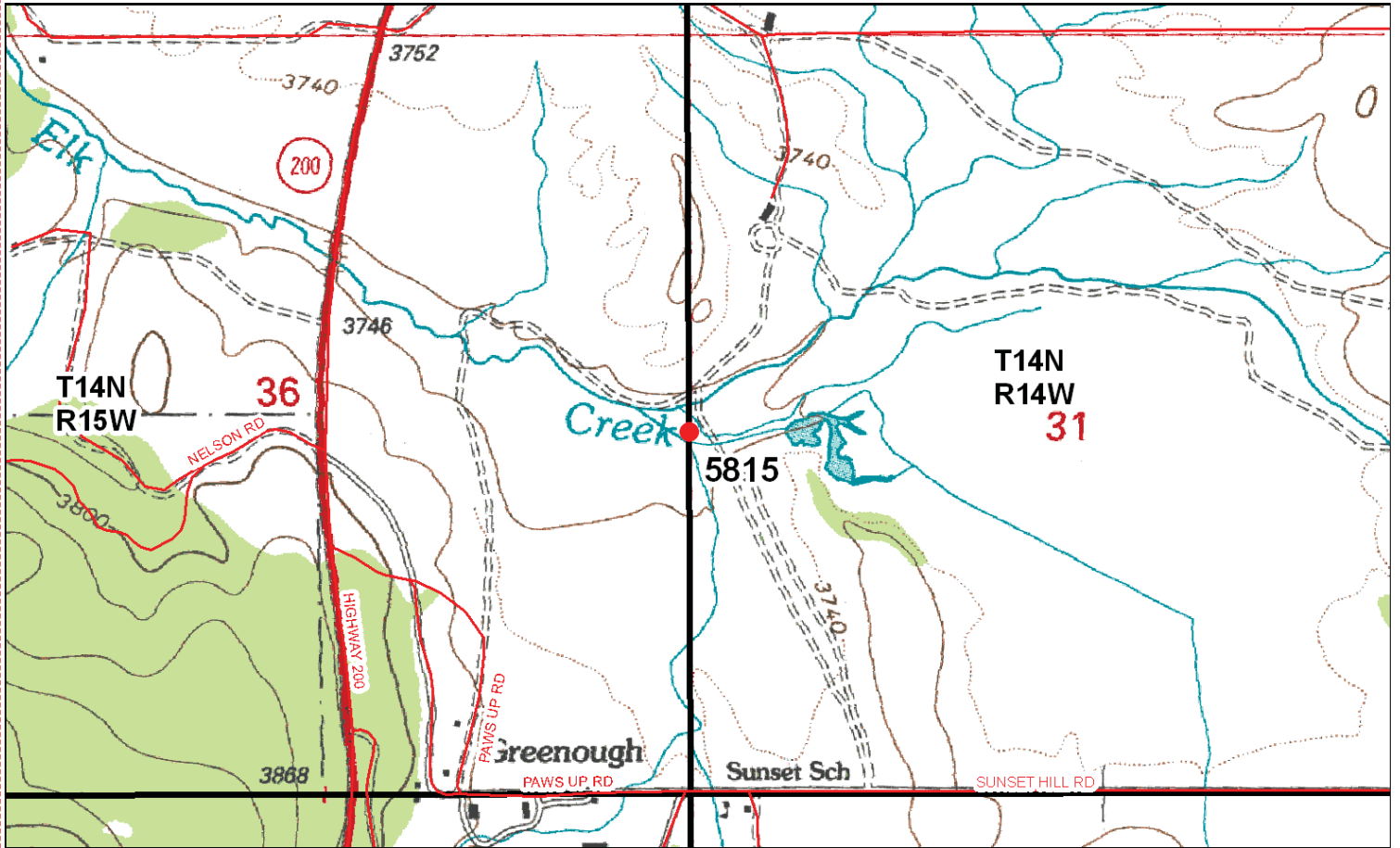


Photo Looking South



To Reach: 2wd access with permission from Paws Up Resort.



Map of Area

- INSTRUCTIONS**
1. Original and/or subsequent records used to establish the corner position.
 2. Description of monument and accessories set to perpetuate the corner position.
 3. Sketch of corner show all pertinent data which can best be shown in a sketch example, corner marking, accessories, etc.
 4. Fill in Cross Index & Section Diagram at bottom of sheet.
 5. Fill in Cross Index & Section Diagram at bottom of sheet.
 6. Fill in Cross Index & Section Diagram at bottom of sheet.

CERTIFIED CORNER RECORDATION

1/4 Corner Common to Sections 31 and 36
T. 14 N. R. 14 W. and R. 15 W. P.M., Missoula County, Montana

RECORD #1: (December 8, 1884) G. L. O. survey by Henry B. Davis

"Set a granite boulder 10 x 9 x 6 in. in the ground for 1/4 sec. cor. marked 1/4 on W. face, dug pits 18, 12 ins. N + S of stone 5 +2 ft. dist. and raised a mound of earth 1 1/2 ft. high, 3 1/2 ft. base alongside."

RECORD #2: (March 15, 2006) Corner Recordation Form #200605759, by Missoula County
Found a 2-1/2" brass cap, marked 1828, no accessories established.

FOUND: (August 20, 2010) A 2-1/2" brass cap, set by surveyor Robert Steele, 1828S. Since there is no filed corner recordation form by Steele for this corner, I was unable to determine the method he used to set this monument. After a survey of found and accepted monuments to the north and south, I decided not to accept Steele's monument as the position of this corner. Steele's monument is nearly on line east and west, between the found monuments, yet his position is 13 feet north of a single proportionate distance.

I established the position of this corner by single proportionate measurement, using the 1884 GLO record, between the section corners to the north and south. See reverse side of this form for measurements.

SET: A 3-1/4" aluminum cap with magnet, marked as shown below, on a 1" x 30" aluminum drivable shaft. From which:

A 2-1/2" Brass Cap, marked 1828S, bears N 03°28'39" W, 13.2 feet. I stamped the cap RM.

This corner falls northeasterly of Elk Creek, near the bank of the creek, in uncut grass. The surrounding area is cultivated, therefore no other objects were available for reference.

NAD 83 (2007) Lat. Lon. NAD 83 (2007) SPC Intl. Ft. Positional information determined by
46°55'26.5232"N 99°468.70 N RTK GPS observations, using
113°25'45.6503"W 987641.42 E GEOID 2009 for elevation.
NAVD88 elevation 3720.5 sft Missoula Co. GPS #5815

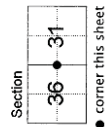
CERTIFICATION
I, Steve Niday, certify the information is true and correct.

Signature of Surveyor: *Steve Niday*
Signature of Client: *Steve Niday*

Date: 10-5-10 Reg. No. 10988LS
Employer: Missoula County Public Works, Survey Office

MISSOULA COUNTY LAND SURVEYORS
Steve Niday
10988LS

Find 2-1/2" BC
N 03°28'39" W
13.2'
Set 3-1/4" Al Cap



Section
36 • 31
• corner this sheet

201019473 B: 867 P: 156 Pages: 2
10/05/2010 10:56:05 AM Corner Recordation
Victoria P. Jester, Missoula County Clerk & Recorder

X-1 T. 14 N., R. 14 W.
Cross Index No. X-25 T. 14 N., R. 15 W. P.M., M.