

Missoula County Control Point Datasheet

Monument Description: 1-1/2" Aluminum Cap 1828S

Project Name: Ninemile Prairie

Station Description: 1/4 Corner

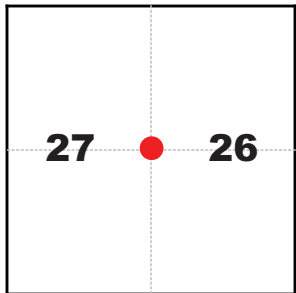
Date Visited: Aug. 4, 2010

Monument Stability: C+ GPS Visibility: A+

Observer: SEN - CLG

Quad. Name: Greenough

T. 14 N. R. 15 W.



NAD 83 (2007) Lat/Long Position

46°56'18.969"N

113°28'20.352"W

NAVD 88 Elevation: 3717.0 sft.

Notes:

Photo of Monument



Photo Looking East

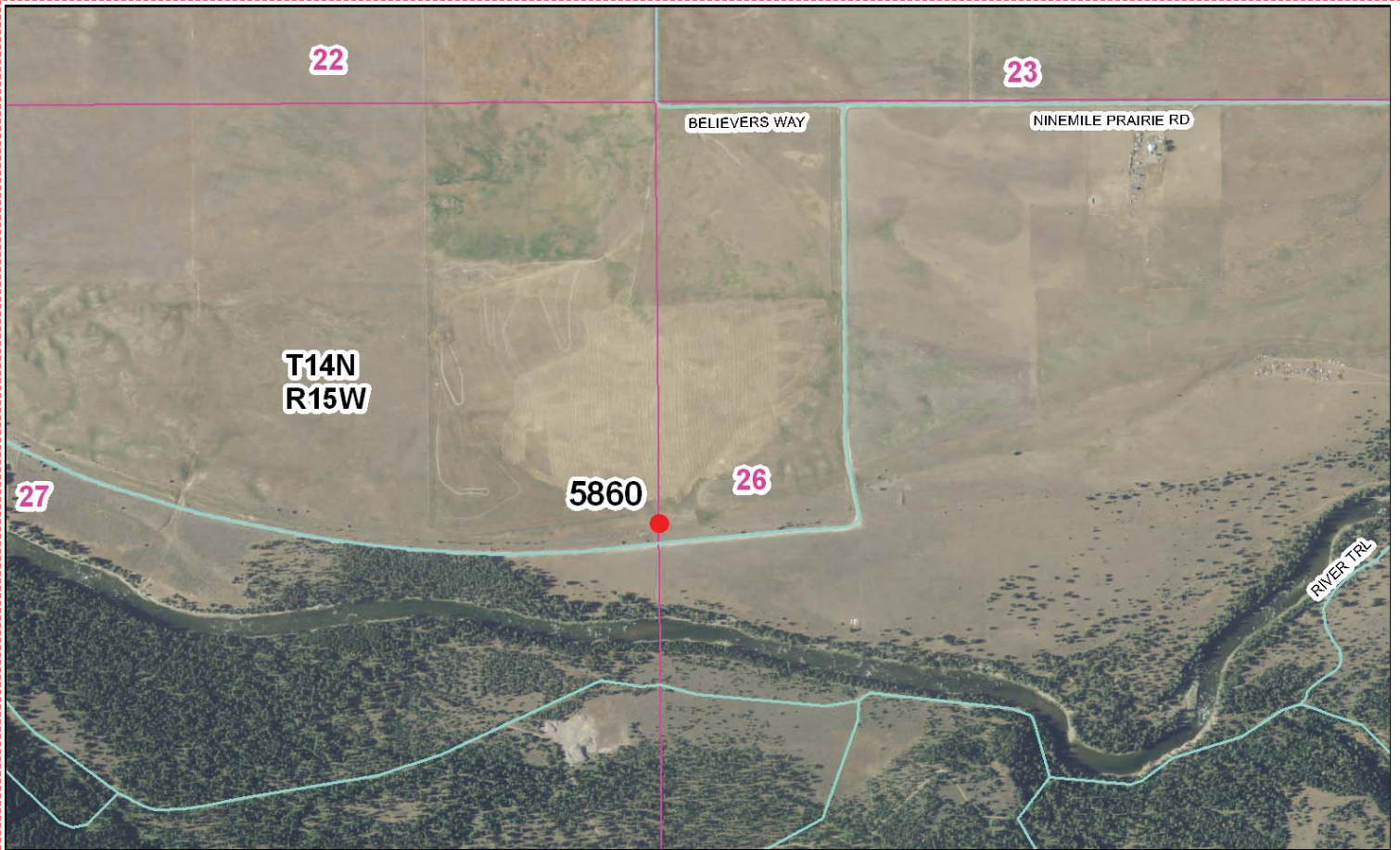


Photo Looking South



Point # 5860

To Reach: 4wd access up a short steep hill or walk 300 feet.



Map of Area

APR 176 REG. 1287

CERTIFIED LAND CORNER RECORDATION

DESCRIPTION OF CORNER EVIDENCE FOUND, AND ORIGINAL RECORD (IF KNOWN)
 The quarter corner common to Sections 27 and 26 in Township 14 North, Range 15 West, Principal Meridian Montana, Missoula County, Montana. Located in Blackfoot River drainage in the "Nine-mile prairie" area.
 This corner falls well within the limits of a cultivated grain field; no trees or other witness structures are anywhere near it. No evidence of the original corner was consequently found at the site.
 A terrain call in the original field notes to the Blackfoot River was too vague to be of any help in locating this corner.

DESCRIPTION OF MONUMENT AND ACCESSORIES ESTABLISHED TO PERPETUATE THE ORIGINAL LOCATION OF THIS CORNER:
 Date of work, Nov., 1979
 I set a 5/8" x 24" rebar with a 1 1/2" aluminum cap atop it in the ground 12 inches below the surface of the ground to avoid disturbance by agriculture machinery.
 I placed a 3/4" white plastic pipe atop the cap and protruding above the surface of the ground to show corner location and not be a threat to mowing equipment, should such occur.
 No witness objects were close enough to be effective here.

SKETCH, WITH COURSE AND DISTANCE TO ADJACENT CORNERS IF DETERMINED IN THIS SURVEY.
 (MAY SKETCH OR PASTE REPRODUCTION ON REVERSE SIDE)
 Corner set in the east-west direction by placing it on a line between the north-west section corner and the southwest section corner.
 Corner set in the north-south direction by projecting the east-west center-of-section line from the east quarter corner through the center of the section.
 Distances shown are a consequence of this procedure.

*82 JUL 14 PM 2 00

22, 23
27, 26
2682.28'
2657.09'
27, 26
34135

Surveyor's Seal

Diagram of Corner:
 N. $\begin{matrix} -27- \\ \diamond \\ -26- \end{matrix}$

I certify that the information shown herein is true and correct.

Signature of Ground Party Chief
 Robert W. Steele
 I certify that I have carefully performed or reviewed the work shown on the diagrammed corner as reported on this recordation form and I approve the same.
 Signature of Surveyor
 Robert W. Steele

1828S
 Registration Number
 820893J8

Office of Clerk and Recorder, County of Missoula
 This "corner record" was filed for record on the 14th day of July 1979, in book No. 176, page No. 1287, in book No. 176, page No. 1287, in book No. 176, page No. 1287, in book No. 176, page No. 1287.
 assigned page No. 1287, in book No. 176, page No. 1287, in book No. 176, page No. 1287, in book No. 176, page No. 1287.
 Conf. 22-4189
 D.S.C.R.
 Cross Index No. T - 17, T. 14 N., R. 15 W., P.M.W., Mer.

Corner Recordation Form or Other Supporting Document

Point # 5860