

# Missoula County Control Point Datasheet

Monument Description: 3-1/4" Aluminum Cap 10998S

Project Name: Ninemile Prairie

Station Description: Section Corner

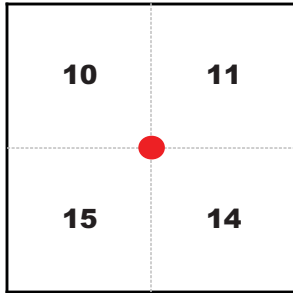
Date Visited: Aug 25, 2010

Monument Stability: C+      GPS Visibility: C

Observer: SEN - CLG

Quad. Name: Greenough

T. 14 N. R. 15 W.



NAD 83 (2007) Lat/Long Position

46°58'31.241"N

113°28'21.293"W

NAVD 88 Elevation: 4539.3 sft

Notes:

Photo of Monument



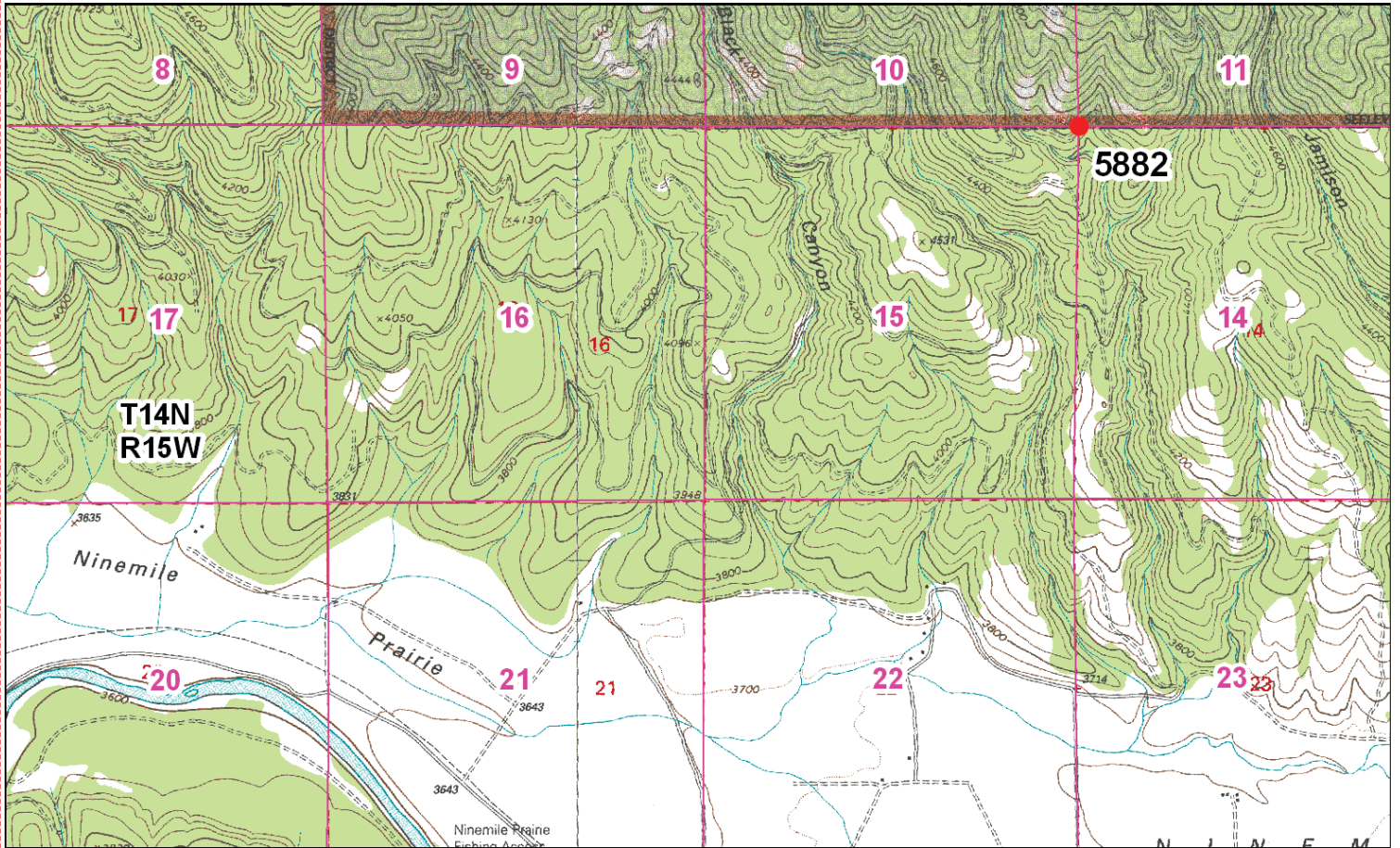
Photo Looking North



Photo Looking South



**To Reach:** 2wd access to within 100 feet, need Plum Creek key and Paws Up Resort combination.



Map of Area

- INSTRUCTIONS**
1. Obtain a copy of subsequent record used to evaluate the corner position.
  2. Description of monument and accessories set to participate in the corner position.
  3. Description of monument and accessories set to participate in the corner position.
  4. Change of corner: show all pertinent data which can best be shown in a sketch example: corner marking, accessories, etc.
  5. Fill in Cross Index & Section Diagram at bottom of sheet.
  6. Fill in Cross Index & Section Diagram at bottom of sheet.

**CERTIFIED CORNER RECORDATION**

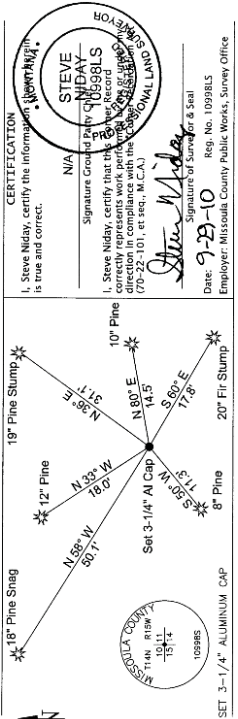
Corner Common to Sections 10, 11, 14 and 15  
T. 14 N. R. 15 W. P.M., Missoula County, Montana

**RECORD:** (September 2, 1886) G. L. O. survey by Harry V. Wheeler  
"Set a sandstone 18 x 9 x 3 ins. 12 ins. in the ground for Cor. to Secs. 10 - 11 14 + 15 marked with 4 notches on S + 2 notches on E. edges; from which  
A pine 12 ins. diam. bears N 36° 30' E. 46 lks. dist. marked T. 14 N. R. 15 W. S. 11 B.T.  
A fir 14 ins. diam. bears S 61° 40' E. 28 lks. dist. marked T. 14 N. R. 15 W. S. 14 B.T.  
A fir 6 ins. diam. bears S. 64° 25' W. 34 lks. dist. marked T. 14 N. R. 15 W. S. 15 B.T.  
A fir 12 ins. diam. bears N. 56° 40' W. 76 lks. dist. marked T. 14 N. R. 15 W. S. 10 B.T."

**FOUND:** (August 25, 2010) A 15 x 9 ins. stone, 3 ins. out of the ground and loose, with 4 notches on the south edge. From which:  
A Ponderosa Pine stump, 19 ins. diam., bears N 36° E, 31.1 feet, with partial healed over face, no scribing visible. (REC N 36° 30' E, 30.4')  
A Fir stump, 20 ins. diam. by 5 ft. tall, bears S 60° E, 17.8 ft., with scribing visible. (REC S 61° 40' E, 18.5')  
A Ponderosa Pine snag, 18 ins. diam. by 4 ft. tall, bears N 58° W, 50.1 ft., no scribing visible. (REC N 56° 40' W, 50.2')

**SET:** A 5/8" x 24" rebar with a 3-1/4" aluminum cap, marked as shown, at the position of the found stone. Built a mound of stone around the monument and laid the original stone upside down on the north edge of the aluminum cap. From which:  
A Ponderosa Pine, 10 ins. diam., bears N 60° E, 14.5 ft., scribed RM.  
A Ponderosa Pine, 8 ins. diam., bears S 50° W, 11.3 ft., scribed RM.  
A Ponderosa Pine, 12 ins. diam., bears N 33° W, 18.0 ft., scribed RM.  
Attached BT tags to all newly established bearing trees.

NAD 83 (2007) Lat. Lon. NAD 83 (2007) SPC Intl. Ft.  
46°58'31.2413"N 101°86'22.23 N  
113°28'21.2928"W 977806.53 E  
NAVD88 elevation 4539.3 sft Missoula Co. GPS #5882



**CERTIFICATION**  
I, Steve Niday, certify the information shown on this record is true and correct.  
Signature of Party: *Steve Niday*  
Signature of Surveyor: *Steve Niday*  
Date: 9-29-10  
Rep. No. 10998LS  
Employer: Missoula County Public Works, Survey Office

Section	10	11
	15	14

Office of Clerk and Recorder, County of Missoula, Recording Information.  
201019161 B: 866 P: 1254 Pages: 1  
10/04/2010 10:04:13 AM Certified Record  
Missoula County Recorder  
Cross Index No. J-17 T. 14 N., R. 15 W. P.M., M. corner this sheet

**Corner Recordation Form or Other Supporting Document**

Point # 5882