

Missoula County Control Point Datasheet

Monument Description: 3-1/4" Aluminum Cap 10998S

Project Name: Ninemile Prairie

Station Description: 1/4 Corner

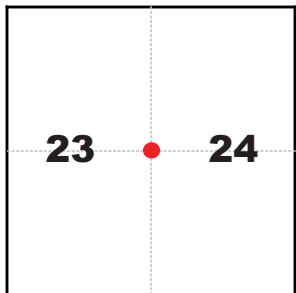
Date Visited: _____

Monument Stability: C GPS Visibility: B+

Observer: SEN - CLG

Quad. Name: Greenough

T. 14 N. R. 15 W.



NAD 83 (2007) Lat/Long Position

46°57'12.100"N

113°27'03.762"W

NAVD 88 Elevation: 3740.9 sft.

Notes:

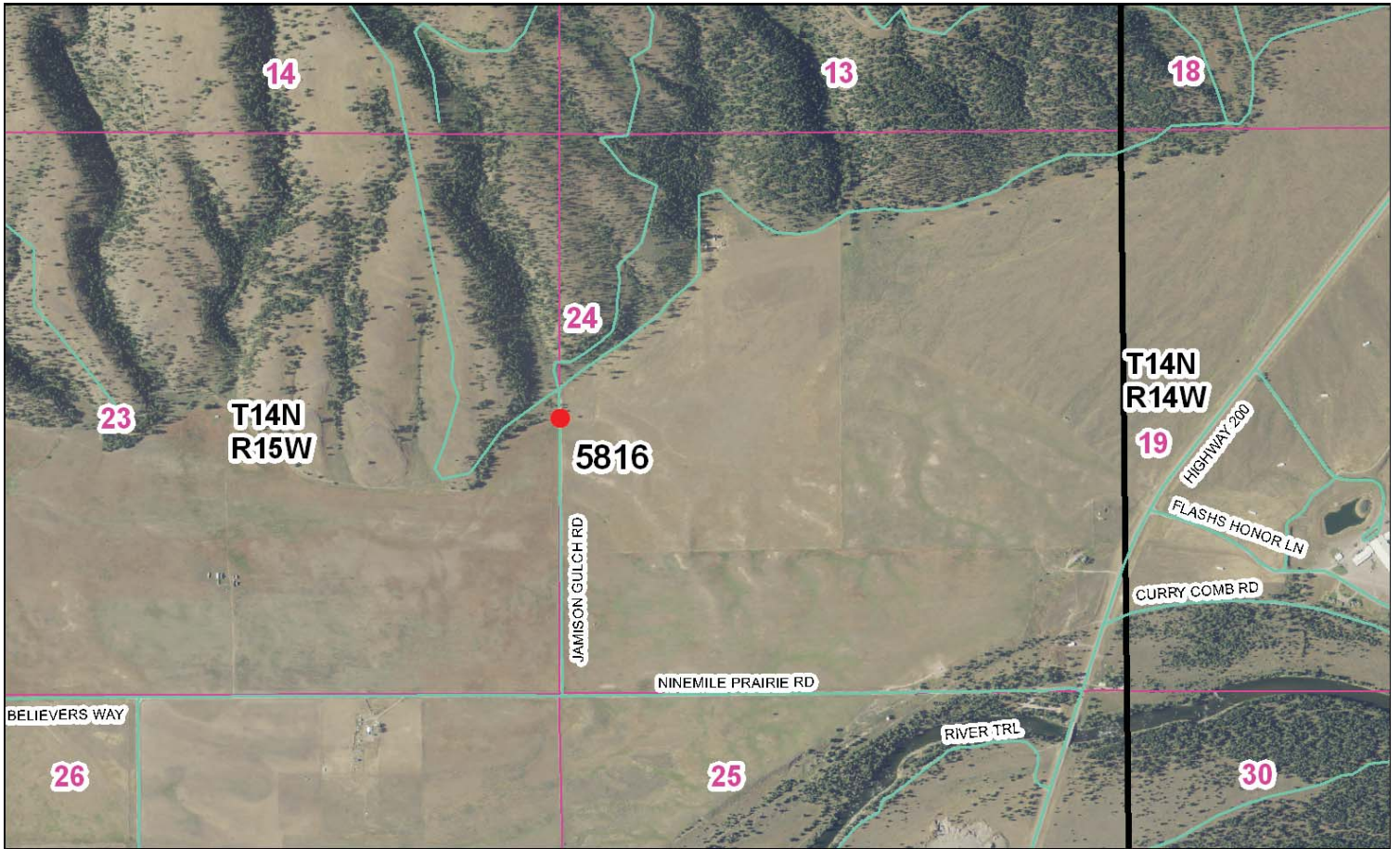
Photo of Monument



Photo Looking North



To Reach: 2wd access.



Map of Area

- INSTRUCTIONS**
1. Original and/or subsequent records used to evaluate the corner position.
 2. Description of monument and accessories set to participate in the corner position.
 3. Station of corner, show all pertinent data which can best be shown in a sketch example, corner marking, accessories, etc.
 4. Station of corner, show all pertinent data which can best be shown in a sketch example, corner marking, accessories, etc.
 5. Fill in Cross Index & Section Diagram at bottom of sheet.
 6. Fill in Cross Index & Section Diagram at bottom of sheet.

CERTIFIED CORNER RECORDATION

1/4 Corner Common to Sections 23 and 24
T. 14 N. R. 15 W. P.M., M. Missoula County, Montana

RECORD #1: (December 11, 1884) G. L. O. survey by Henry B. Davis
"Set a granite stone 10 x 9 x 8 ins. in the ground for 1/4 sec. cor. marked 1/4 on W. face, dug pits 18, 18, 12 ins. N. + S. stone 5 1/2 ft. dia. and raised a mound of earth 1 1/2 ft. high, 3 1/2 ft. base alongside."

RECORD #2: (August 31, 1886) G. L. O. survey by Henry V. Wheeler
"...1/4 Sec. Cor. to Secs. 23 + 24 which is a sandstone 13 x 5 x 2 ins. set 5 ins. in the ground + marked 1/4 on W. face, has 2 pits and small mound of earth alongside. Situated on prairie + 1 1/2 chs. N. of old Indian trail."

RECORD #3: (February 10, 1895) Corner Recordation Form #8602472, by Elden L. Inabnit
"FOUND: No stone or evidence of pits or mounds were found. Road construction & cultivation has destroyed the corner. Monuments were found."

SET: 5/8" x 24" Rebar w/ 1-1/2" AL. Cap. Corner established by proportional measurements on north - south line where good monuments were found.
Established two new RMs.

A 5/8" diam bears N. 77° E. 15.6 ft. Marked RM
A 5/8" diam bears S. 28° E. 32.0 ft. Marked with aluminum shiner."

FOUND: (August 17, 2010) A 5/8" rebar, 4.5 ft. east of the centerline of Jamison Gulch Road. A survey of adjacent monuments determined that this corner was improperly set. Inabnit used the monument for the SE corner of section 23, which was improperly set by Robert Steele, to proportion this 1/4 corner. An extensive retracement of PLSS corners in the area was completed, and a corrected position was determined.

Since the 1886 survey did not resurvey the entire line between sections 23 & 24, I did not use single proportion to establish the corner. The 1886 survey established the northeast and northwest section corners of section 24, not fixing the 1884 monument for the quarter corner. Therefore I used this relationship to establish the easting of the quarter corner, and the cardinal elements of the northwest and southwest corners of section 24 to establish the northing. Using this method, the corner falls 0.6 feet west of the centerline of Jamison Gulch Road. Using single proportion, the corner falls west, 16.85 feet from the position I determined to be the best representation of the original position. See reverse side of this form for measurements.

SET: A 3-1/4" aluminum cap with magnet, marked as shown below, on a 1" x 30" drivable shaft, 7" below the road surface.
From which:

- A 5/8" rebar bears N 46°55'35" E, 7.55 feet.
- A 2-1/2" aluminum cap, on a 5/8" x 24" rebar, bears S 36° E, 29.06 feet.

NAD 83 (2007) Lat. Lon. 46°57'12.0988" N 113°27'03.7615" W
NAVD88 elevation 3740.9 sft
Missoula Co. GPS #5916

Positional information determined by RTK GPS observations, using GEOID 2009 for elevation.

CERTIFICATION
I, Steve Niday, certify the information on this record is true and correct.

Signature of Surveyor
Steve Niday
Steve Niday, Cert. No. 10998LS
070-2741.01, 01/24/14, M.E.A.

Date: 10-6-10
Reg. No. 10998LS
Employer: Missoula County Public Works, Survey Office

Section

23	24
----	----

● corner this sheet

201019472 B: 867 P: 165
10/06/2010 10:36:05 AM Corner Recordation
Steve Niday, Missoula County Clerk & Recorder

Cross Index No. P-21 T. 14 N., R. 15 W. P.M., M.

Corner Recordation Form or Other Supporting Document