

Missoula County Control Point Datasheet

Monument Description: 3-1/4" Aluminum Cap 2923S

Project Name: Ninemile Prairie

Station Description: 1/4 Corner Section 1 Only

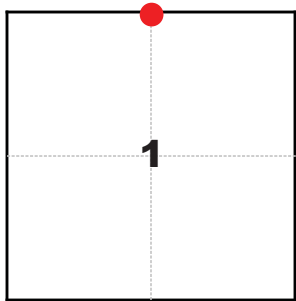
Date Visited: Aug. 24, 2010

Monument Stability: C GPS Visibility: B

Observer: SEN - CLG

Quad. Name: Salmon Lake

T. 14 N. R. 15 W.



NAD 83 (2007) Lat/Long Position

47°00'16.122"N

113°26'24.523"W

NAVD 88 Elevation: 5041.2 sft

Notes:

Photo of Monument



Photo Looking East

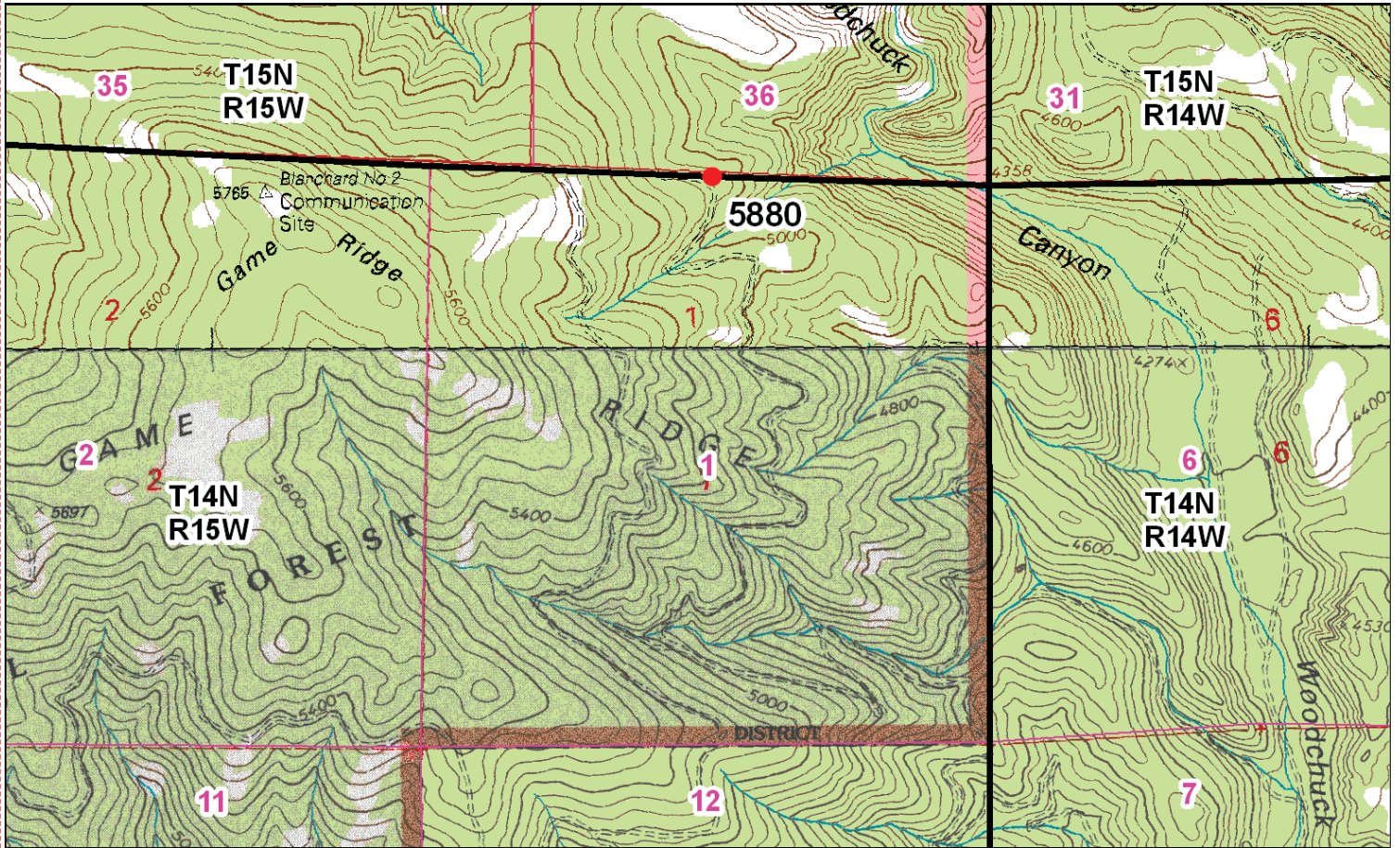


Photo Looking West



Point # 5880

To Reach: 2wd access to within 150 of the monument, need Plum Creek key.



Map of Area

O-CO-STD/152
Created 4/8/92

- INSTRUCTIONS**
1. Original and/or subsequent record used to evaluate the corner position.
 2. Description of monument found, note discrepancies in the record, state method of establishing lost or obliterated corners.
 3. Description of monument and accessories set to perpetuate the corner position.
 4. Diagrams showing the location of the monument, corner marking, topography etc. position of accessories.
 5. Certification must be signed and sealed by Land Surveyor registered in the State of Missouri.
 6. Fill in Cross Index & Section Diagram at bottom of sheet.

CERTIFIED CORNER RECORDDATION

Corner 1/4 Section Corner of Section 1 only. T. 14N. R. 15W. P.M.M. Missoula County

Record: 1886 GLO. Harry Wheeler

A 4" diam. Pine corner tree, marked 1/4 S on N. side.

From which:

- A 20" Tamarack, bears N 30° E, 7 lks. (4.6) dist., mkd: 1/4 S BT
- A 5" Pine, bears S 12° E, 21 lks. (13.9) dist., mkd: 1/4 S BT

1998:

Found: A 22" Tamarack snag, lying dead and down, with axe work and illegible scribing visible on rotted blaze.

Found no evidence of SE BT or Pine corner tree.

At record bearing and distance from NE BT (S 30° W, 4.6'), set 5/8" x 24" rebar, 22" in ground with 3 1/4" PCI aluminum cap.

From which the new BT's:

- A 9" Tamarack, bears S 09° W, 38.2' dist., mkd: "X" 1/4 S1 BT with attached BT tag.
- A 8" Tamarack, bears N 81° W, 57.6' dist., mkd: RM with attached BT tag.
- A 6" Lodgepole Pine, bears N 51° E, 21' dist., mkd: RM with attached BT tag.

SEE CERTIFICATE OF SURVEY NO. 4872 ON FILE AT MISSOULA COUNTY

998 DEC 7 10:08:29

MT. NAD 83-96 State Plane Coord. (Int. Ft.) N 1028890.43 E) 986422.60

CERTIFICATION

I, Matthew Jacobson, certify the information shown herein is true and correct.

Signature: *Matthew Jacobson*
Signature Ground Party Chief

I, R.A. Ainsworth, certify that this Corner Record correctly represents work performed by me or under my direction in compliance with the "Corner Recorrdation Act" (Mo-22-101, et seq., M.C.A.)

Signature of Surveyor & Seal: *R.A. Ainsworth*
Date: July, 1998 Reg. No. 2923S
Employer: Professional Consultants, Inc.

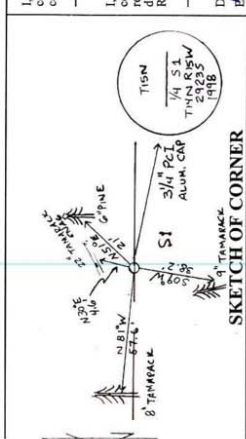
Sec. 1

Office of Clerk and Recorder, County of Missoula

record" was filed for record on December 7, 1998 and was noted on the cross-index plat and is assigned page No. 1515 in book No. 5104 @ 935 1170 WICKIE M. ZIEGLER, Missoula County Clerk

C.P.C. 199832445 DEPUTY

Cross Index No. A-23. T. 14N. R. 15W. PMM • Corner this sheet



Corner Recordation Form or Other Supporting Document