

# CERTIFIED CORNER RECORDATION

Corner Northeast Section 1 T. 14 N. R. 17 E. P.M.M. Fergus County  
 Northwest Section 6 14 N. 18 E.  
 Southwest Section 31 15 N. 18 E.  
 Southeast Section 36 15 N. 17 E.

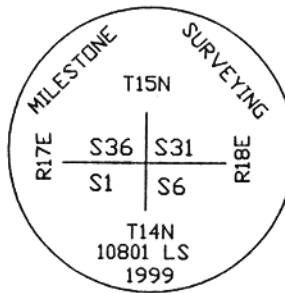
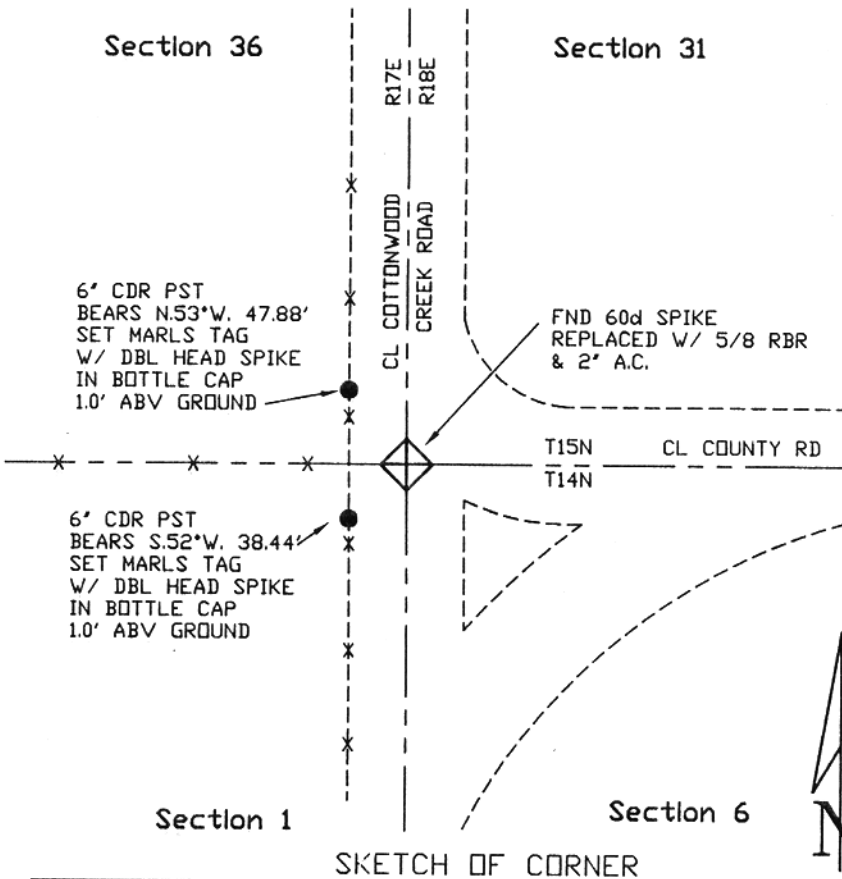
**ORIGINAL RECORD:** (Folsom, 1875) Set a limestone 14 x 9 x 7 in. 9 in. in the ground for corner to Townships 14/15 N. between Ranges 17/18 E. Marked with 6 notches on all 4 faces. Dug pits 24 x 18 x 12 in in each Section 6 ft. distant.

**SUBSEQUENT RECORD:** Nash corner recordation form (filed incorrectly) shows setting a spike at county road intersection and in line with a fence to the West.

**EVIDENCE FOUND:** (January, 1999) Found 60d spike at intersection of county roads per Nash corner form.

**PERPETUATION:** (January, 1999) Accepted evidence of spike at intersection of county roads and fence line to West as best available evidence. Set 5/8" rebar with 2" aluminum cap .2' below gravel road surface. Set references as shown below.

SEE REVERSE SIDE FOR ADDITION PERPETUATION



97-236

CERTIFICATION

I, \_\_\_\_\_  
 certify the information shown herein is true and correct.

Signature Ground Party Chief

I, Scott C. Koterba  
 certify that this Corner Record correctly represents work performed by me or under my direction in compliance with the "Corner Recordation Act" (70-22-10), et seq., M.C.A.)

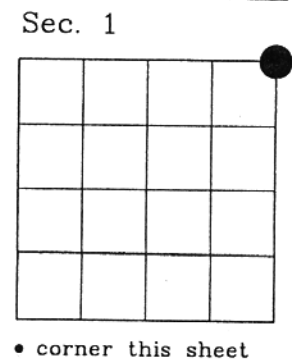
*Scott C. Koterba*  
 Signature of Surveyor & Seal

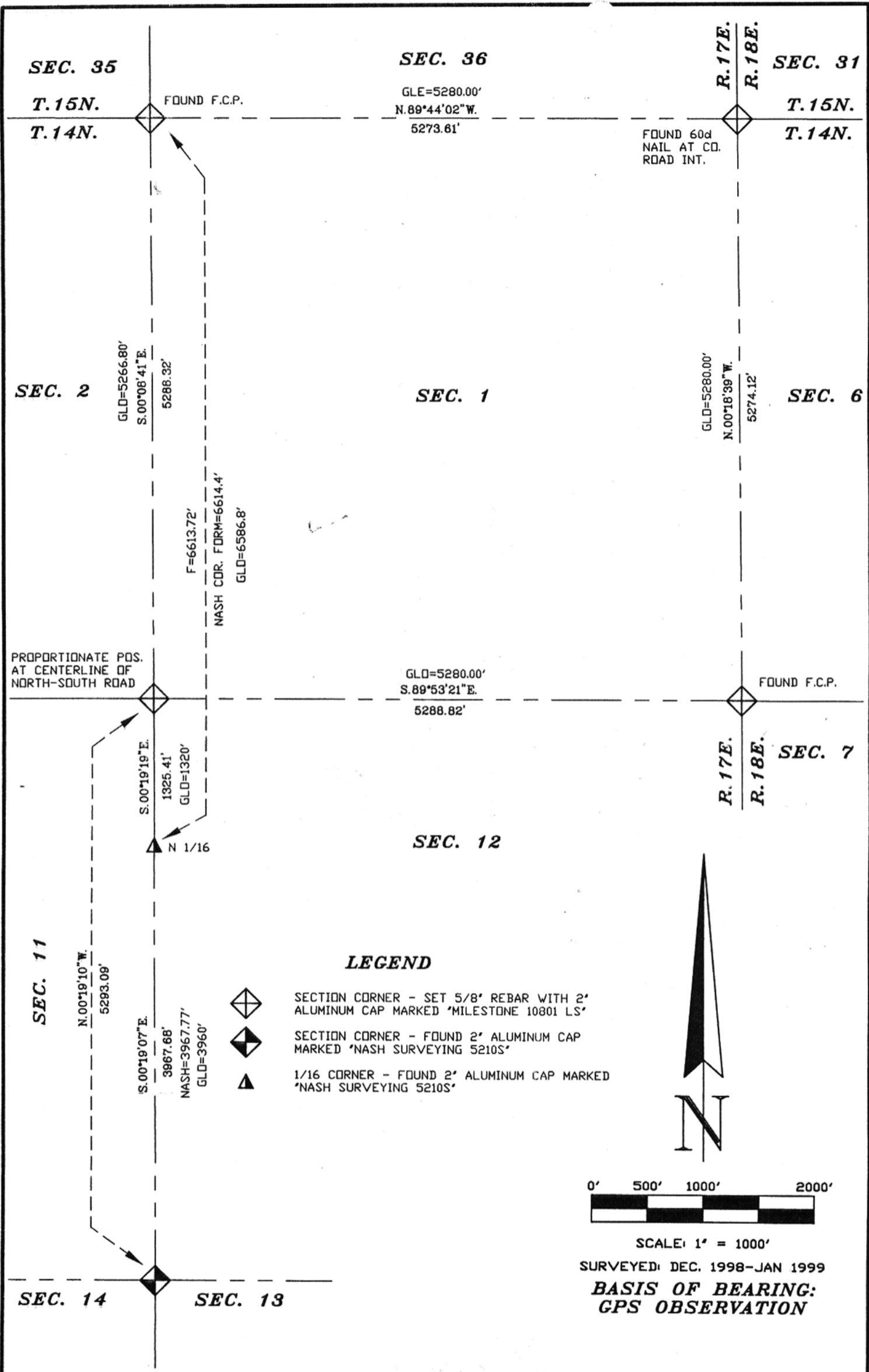
Date: 1/6/99 Reg. No. 10801 LS  
 Employer: Milestone Surveying

Office of Clerk and Recorder, County of FERGUS. This "corner record" was filed for record on JAN - 6 1999 was noted on the cross-index plat and is assigned page No. 73, in book No. 5




*Larry A. Felt*  
 County Official *Dep*

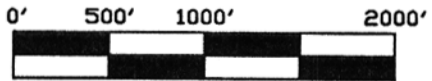
Cross Index No. A25 14' N. 17 E.  
A1 14 N. 18 E. PMM  
Z1 15 N. 18 E.  
Z25 15 N. 17 E.





**LEGEND**

-  SECTION CORNER - SET 5/8" REBAR WITH 2" ALUMINUM CAP MARKED "MILESTONE 10801 LS"
-  SECTION CORNER - FOUND 2" ALUMINUM CAP MARKED "NASH SURVEYING 5210S"
-  1/16 CORNER - FOUND 2" ALUMINUM CAP MARKED "NASH SURVEYING 5210S"



SCALE: 1' = 1000'  
 SURVEYED: DEC. 1998-JAN 1999  
**BASIS OF BEARING:**  
**GPS OBSERVATION**



**MILESTONE SURVEYING, INC.**  
 SCOTT C. KOTERBA, PLS  
 324 DARBY AVE., LEWISTOWN, MT 59457  
 PHONE/FAX (406) 538-9223

DRAWN: D. HENDERHAN  
 CHECKED: S. KOTERBA  
 DATE: JAN. 6, 1999  
 REVISION: \_\_\_\_\_

SCALE: 1' = 1000'  
 CLIENT: MAXWELL  
 PROJ. NO. 98-236  
 FILE: 98-236