

79029

CERTIFIED LAND CORNER RECORDATION

DESCRIPTION OF CORNER EVIDENCE FOUND, AND ORIGINAL RECORD (IF KNOWN)

There was no evidence of stone or mound of stones; from an obliterated fence corner, fences run north and west randomly..

Excerpts from the original field notes: "At 40.26 chains set a sandstone 20 x 10 x 5 ins. 15 ins. in the ground for 1/4 sec. cor., marked 1/4 on the north face and raised a mound of stones alongside, over bench..."

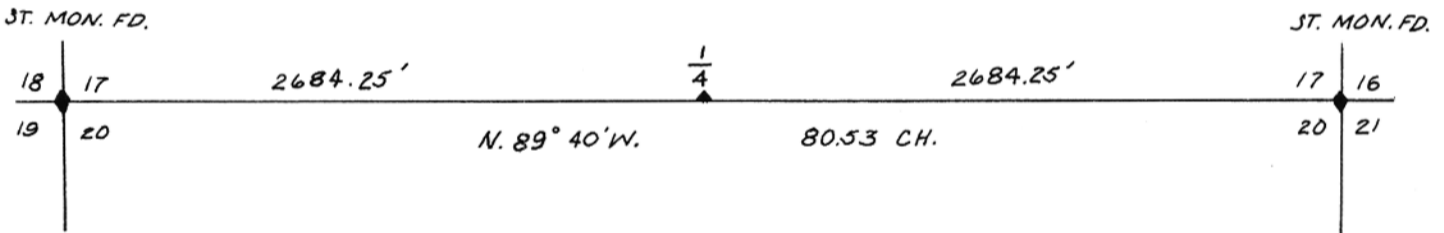
DESCRIPTION OF MONUMENT AND ACCESSORIES ESTABLISHED TO PERPETUATE THE ORIGINAL LOCATION OF THIS CORNER:

Date of work: April 11, 1979

Set a 5/8" re-bar x 24" long with an aluminum cap marked thus: 3" below the surface of a private road, and blazed two bearing trees, and marked 1/4 on the face of each blaze. In the W 1/2, a bearing tree (Pine) 14" in diameter, bears N. 37°25' W., a dist. of 19.4' and in the E 1/2, a bearing tree (Pine) 12" in diameter bears N. 86°06' E., a distance of 35.0 feet.



SKETCH, WITH COURSE AND DISTANCE TO ADJACENT CORNERS IF DETERMINED IN THIS SURVEY. (MAY SKETCH OR PASTE REPRODUCTION ON REVERSE SIDE.)



All stone monuments found were firmly set, marked and witnessed as described in the Original Field Notes.

Surveyor's Seal

I, _____ certify that the information shown herein is true and correct.

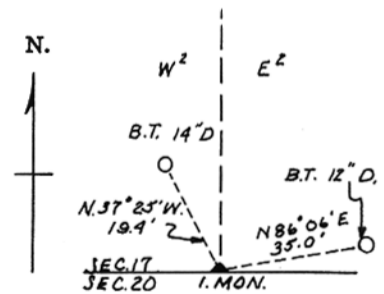
Signature of Ground Party Chief

I, Alexander S. Ragenovich, certify that I have carefully performed or reviewed the work done on the diagrammed corner as reported on this recordation form and approve the same.

Signature of Surveyor (Alexander S. Ragenovich)

555 Registration Number

DIAGRAM OF CORNER:



= Corner recorded on the sheet

Office of Clerk and Recorder, County of Tejus APR 19 1979 This "corner record" was filed for record on the _____ day of _____ 19_____, was noted on the cross-index plat and is assigned page No. 171, in book No. 1-20M County Official May Rathun Cross Index No. N-7 T. 14 R. 18 Mer.