

INSTRUCTIONS

1. Original and/or subsequent record used to evaluate the corner position.
2. Description of evidence found, note discrepancies in the record, state method of establishing lost or obliterated corners.
3. Description of monument and accessories set to perpetuate the corner position.
4. Sketch of corner, show all pertinent data which can best be shown in a sketch example, corner marking, topography ties, position of accessories, etc.
5. Certification must be signed and sealed by Land Surveyor registered in the State of Montana.
6. Fill in Cross Index & Section Diagram at bottom of sheet.

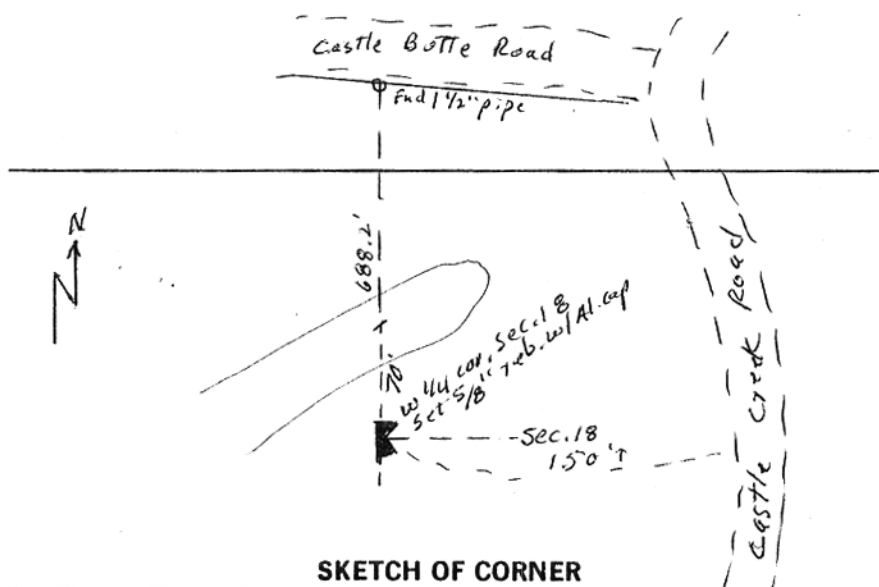
CERTIFIED CORNER RECORDATION

Corner W 1/4 Sec. 18 T. 14 N R. 19 E P.M.M. FERGUS County

1. Original Record 1882 by G. Robinson: On point of ridge N-E. 50 ft. above. Set sandstone 16x8x4 ins., 11 ins. in the ground for 1/4 sec. cor. marked 1/4 on West face, dug pits 18x18x12 ins. N. and S. of stone, 5 1/2 ft. dist. and raised a mound of earth 1 1/2 ft. high, 3 1/2 ft. base alongside.
2. Found set sandstone 8x4x8" up marked 1/4 on the W. face in small mound of stone, 70 ft. S. of top of NE. ridge for W 1/4 cor. Sec. 18 as described in 1886 survey of E. Bndry of T.14N., R.18E.
3. In place of stone set 5/8"x30" rebar with 2 " alumium cap 5" above the ground marked

T14N R19E
1/4
S 18
1993

buried stone upside down S. of cor. and arranged small mound of stone around cor.



STATE OF MONTANA
G. S. NASH
L.S. 52105
LAND SURVEYOR

I, _____ certify the information shown herein is true and correct.

Signature Ground Party Chief
STEWART NASH

I, _____ certify that this Corner Record correctly represents a work performed by me or under my direction in compliance with the "Corner Recordation Act" (70-22-101, et seq., M.C.A.)

Stewart Nash
Signature of Surveyor & Seal

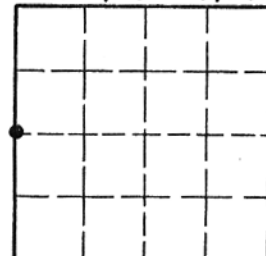
Date: 11-26-93 Reg. No. 52105

Employer: SELF

Office of Clerk and Recorder, County of FERGUS. This "corner record" was filed for record on MAR 18 1994 was noted on the cross-index plat and is assigned page No. 9, in book No. 4

Robin St. Pallott
County Official

Sec.18, T.14N., R.19E.



Cross Index No. L-1 T. 14N R. 19E P.M.M.

• - corner this sheet