

080068

CERTIFIED CORNER RECORDATION

Corner SW SECTION 6 T. 14N R. 19E P.M.M. FERGUS County

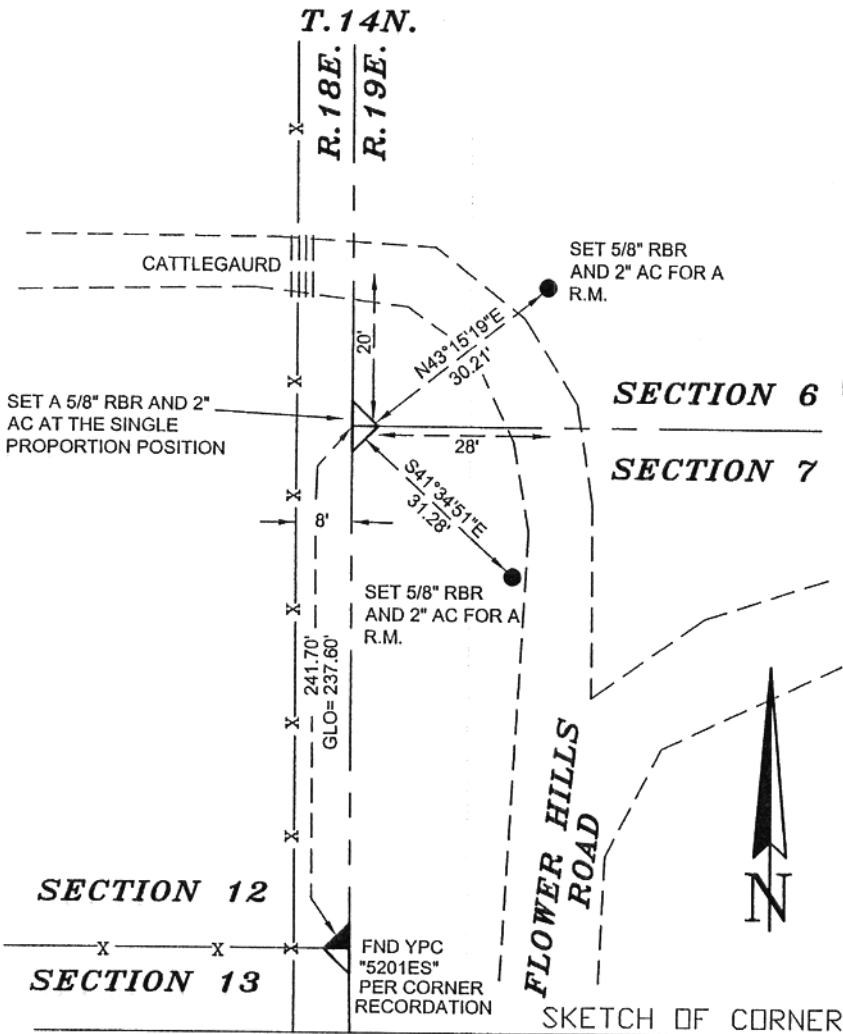
ORIGINAL RECORD: (GLO-Robinson, 1882) Set a sandstone, 14" x 9" x 7", 10 ins. in the ground for Cor. to Secs 1, 12, 6 and 7 marked 5 notches on the S. and 1 notch on the N. edges, dug pits 18 x 18 x 12 ins. in each section, 5 1/2 ft. dist. and raised a mound of earth 2ft. high, 4 1/2 ft base alongside.

SUBSEQUENT RECORD: (GLO-Stafford, 1886) For the Section Corner of Sections 6 & 7 a sandstone, 14 x 9 x 7 in. firmly set in the ground marked with 5 notches on S. and 1 notch on N. edges with pits and mound of earth alongside bears North 3.60 chs from the corner of Sections 1 & 12.

EVIDENCE FOUND: (July, 2005) No original evidence was found.

PERPETUATION: (July, 2005) Set a 5/8" rebar and 2" aluminum cap, marked as shown at the single proportion position and set references as shown below.

SEE ASSOCIATED CERTIFICATE OF SURVEY



05-669

CERTIFICATION

I, _____ certify the information shown herein is true and correct.

Signature Ground Party Chief

Scott C. Koterba

I, _____ certify that this Corner Record correctly represents work performed by me or under my direction in compliance with the "Corner Recordation Act" (70-22-101, et seq., M.C.A.)

Signature of Surveyor & Seal

Date: 7/22/05 Reg. No. 10801 LS

Employer: Milestone Surveying

080068 Fee: \$.00 Bk Pg

FERGUS COUNTY Filed 07/22/2005 At 02:00 PM
Kathy Fleharty, Clk & Rcdr By Kin Mansour
Return to: FERGUS COUNTY 712 WEST MAIN
LEWISTOWN, MT 59457

book No. #7

_____ This "corner

No. page 34, in

County Official

Cross Index No. E-1 T. 14N R. 19E P.M.M.

Sec. 6

| | | | |
|--|--|--|--|
| | | | |
| | | | |
| | | | |
| | | | |

• corner this sheet

080068

080068