

CERTIFIED CORNER RECORDATION

Corner Southeast Corner Section 20 T. 14 N. R. 19 E. P.M.M. Fergus County

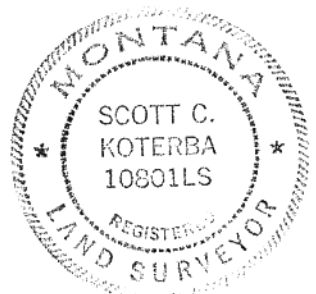
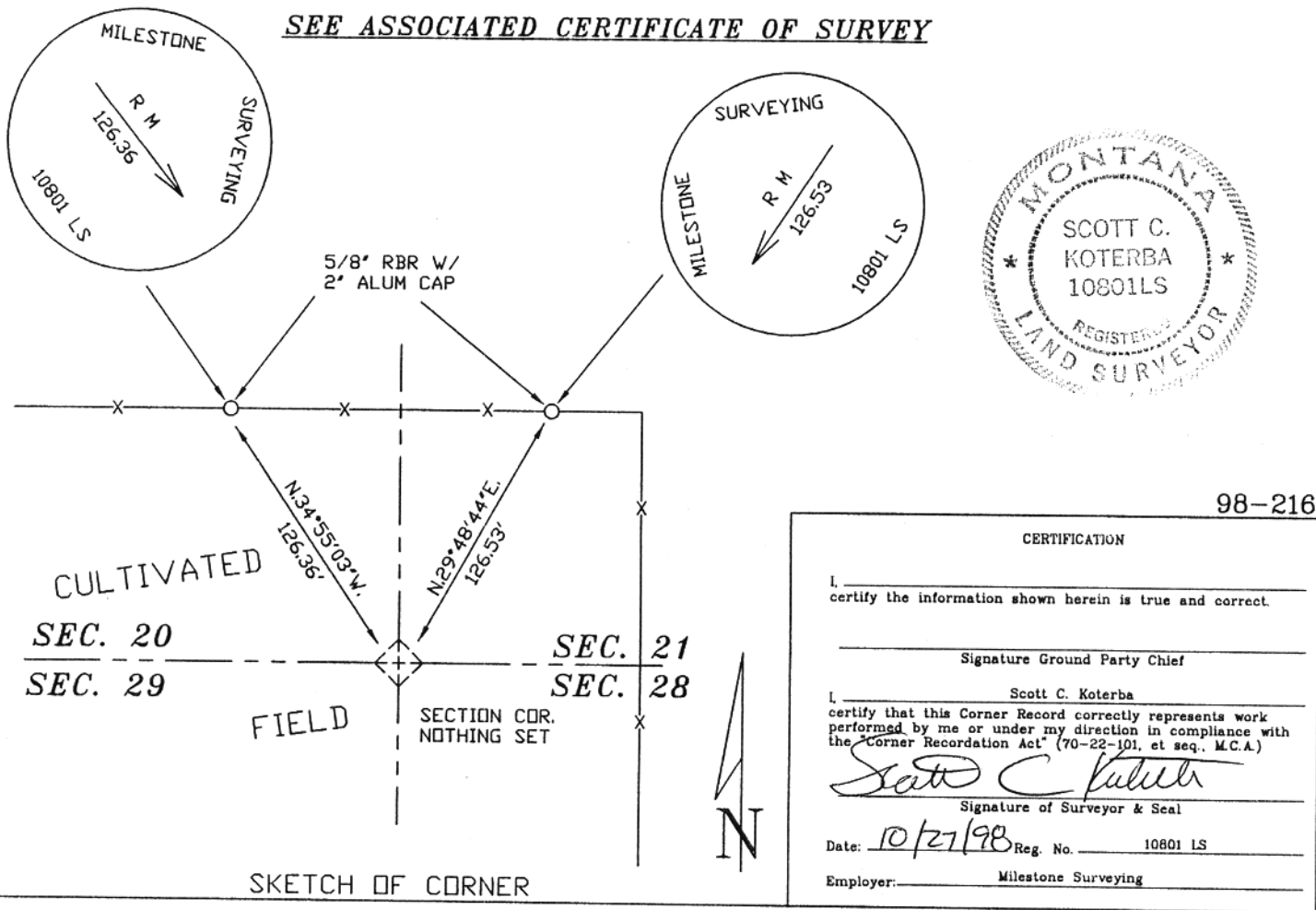
ORIGINAL RECORD: (Robinson, 1882) Set limestone 18"x 16"x 8", 12" in the ground for corner to Sections 20, 21, 28, and 29 marked 2 notches on South, and 4 on East edges, dug pits 18x18x12 in. in each section 5 1/2 ft. distant and raised a mound of earth 2 ft. high, 4 1/2 ft. base alongside.

SUBSEQUENT RECORD: None

EVIDENCE FOUND: (October, 1998) Nothing found due to farm activity.

PERPETUATION: (October, 1998) I perpetuated this corner at the best determined proportional position holding fences North and South and the Northeast corner of Section 20. No corners could be found up to 1 1/2 miles East of this corner. Nothing set at the corner position as it falls in a hay field. Set reference monuments, marked as shown. See drawing below.

SEE ASSOCIATED CERTIFICATE OF SURVEY



98-216

CERTIFICATION

I, _____
certify the information shown herein is true and correct.

Signature Ground Party Chief

I, Scott C. Koterba
certify that this Corner Record correctly represents work performed by me or under my direction in compliance with the "Corner Recordation Act" (70-22-101, et seq. M.C.A.)

Scott C. Koterba
Signature of Surveyor & Seal

Date: 10/21/98 Reg. No. 10801 LS

Employer: _____ Milestone Surveying

Office of Clerk and Recorder, County of FERGUS. This "corner record" was filed for record on OCT 28 1998 was noted on the cross-index plat and is assigned page No. 54, in book No. 5

Larry A. Schubert by *M. Barwick*
County Official *dep*

Cross Index No. R9 T. 14 N. R. 19 E. P.M.M.

Sec. 20
