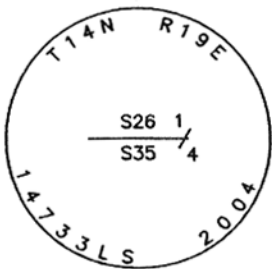
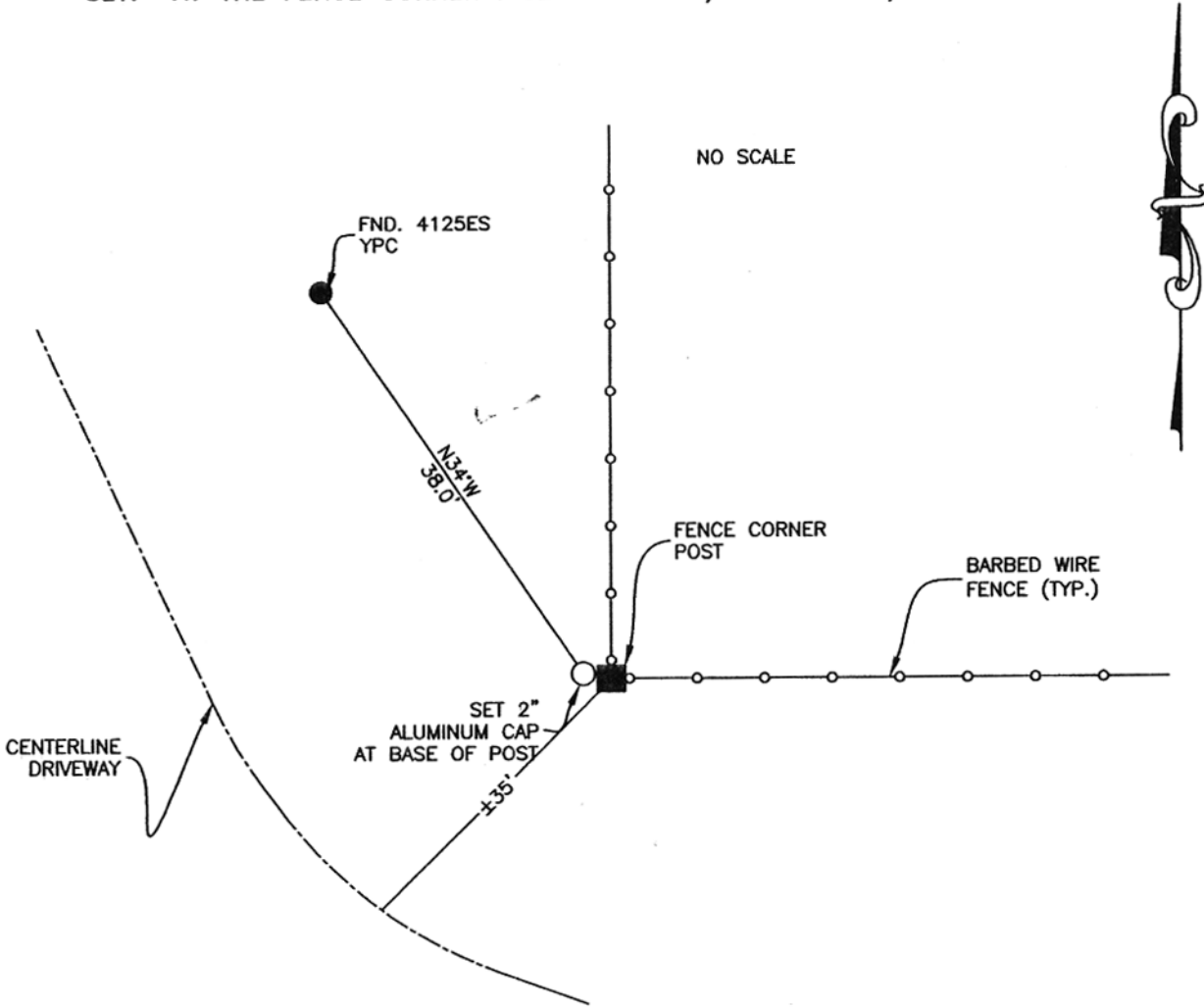


CERTIFIED CORNER RECORDATION

Corner: SOUTH 1/4 CORNER SECTION 26 T. 14N R. 19E P.M., M. FERGUS County
 RECORD: SET LIMESTONE 20X14X6 IN. 15 IN. IN THE GROUND FOR 1/4 SEC. COR. MARKED 1/4 ON N. FACE AND RAISED A MOUND OF STONE ALONGSIDE. PITS IMPRACTICABLE.
 FOUND: NOTHING FOUND OF CORNER STONE. FOUND FENCE INTERSECTION TO FENCES RUNNING EAST AND NORTH. I ACCEPT THE FENCE CORNER AS THE 1/4 CORNER. FOUND YELLOW PLASTIC CAP BY BEGGS 4125ES WHICH BEARS N34°W, 38.0 FEET, NOT ACCEPTED.
 SET: AT THE FENCE CORNER I SET A 2' X 5/8" REBAR W/ 2" ALUMINUM CAP.



SKETCH OF CORNER

2" ALUMINUM CAP

CERTIFICATION

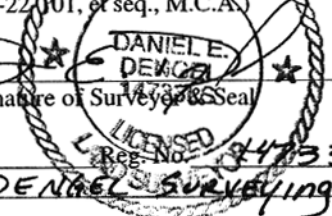
I, DAN E. DENEGEL
 certify the information shown herein is true and correct.

D.E.D.
 Signature Ground Party Chief

I, DAN E. DENEGEL
 certify that this Corner Record correctly represents work performed by me or under my direction in compliance with the "Corner Recordation Act" (70-22-001, et seq., M.C.A.)

D. Denegel
 Signature of Surveyor Seal

Date: 1/18/05
 Employer: DENEGEL SURVEYING



077970 Fee: \$.00 Bk Pg

FERGUS COUNTY Filed 01/20/2005 At 11:25 AM
 Kathy Fleharty, Clk & Rcdr By Kim Mansseau
 Return to: FERGUS COUNTY 712 WEST MAIN
 LEWISTOWN, MT 59457

Book 7
 Pg. 10

County Official
 Cross Index No. V-19 T. 14 R. 19 P.M., M.

Section 26

