

# Missoula County Control Point Datasheet

Monument Description: 2-1/2" Brass Cap 2345ES

Project Name: ALL

Station Description: 1/4 Corner

Date Visited: July 13, 2010

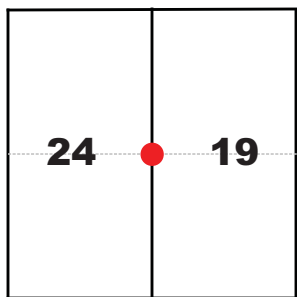
Monument Stability: B      GPS Visibility: D

Observer: SEN

Quad. Name: Primrose

T. 14 N.

R. 21 W. R. 20 W.



### NAD 83 (2007) Lat/Long Position

46°57'27.702"N

114°11'14.655"W

NAVD 88 Elevation: 3077.3 sft.

### Notes:

Monument is 10" below the road surface.

Photo of Monument



Photo Looking North



Photo Looking East

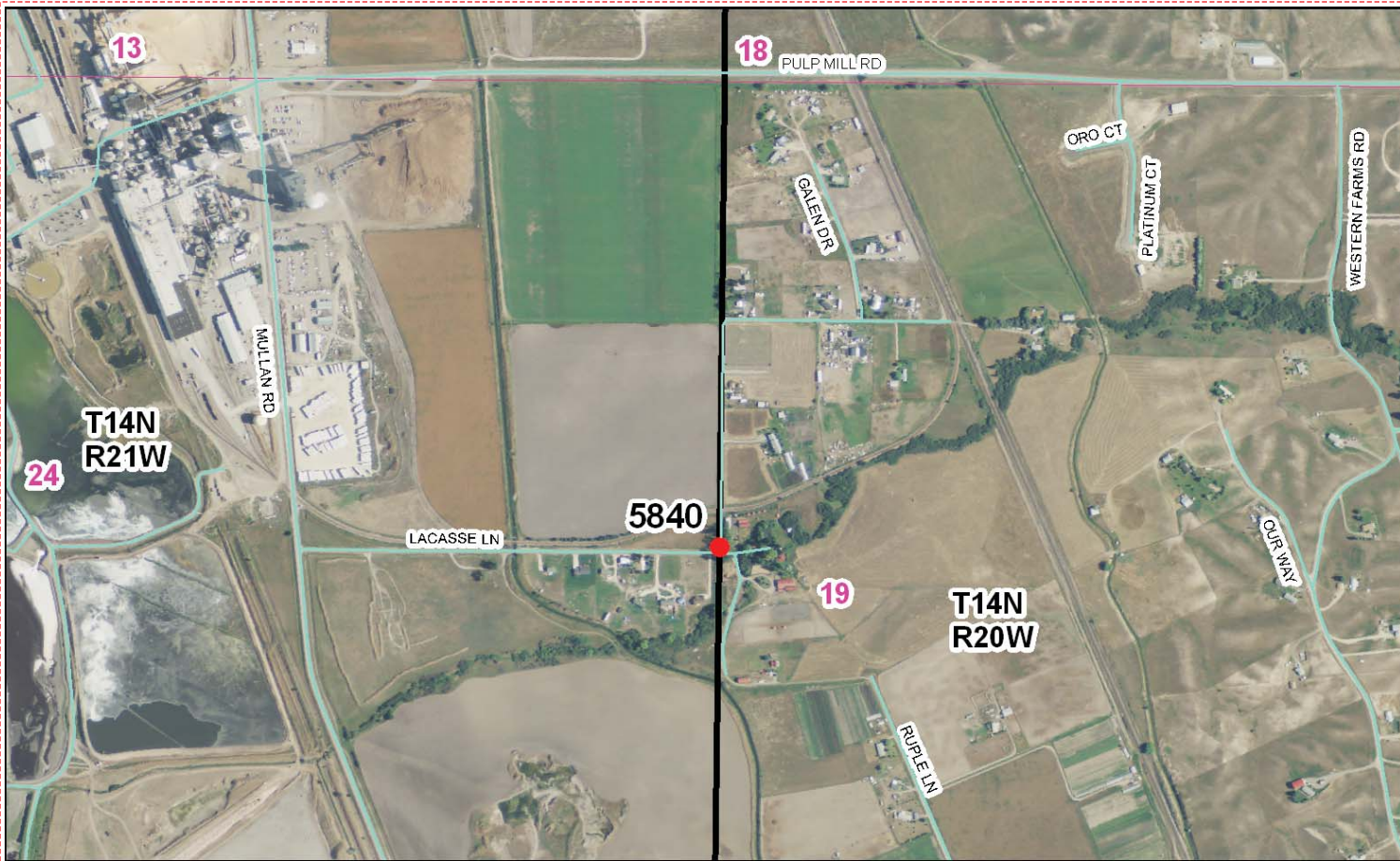


Photo Looking West





**To Reach:** 2wd access.



Map of Area

**CERTIFIED LAND CORNER RECORDATION**

DESCRIPTION OF CORNER EVIDENCE FOUND, AND ORIGINAL RECORD (IF KNOWN)  
 At the 4 corner common to Section 24, T.14 N., R.21 W., & Section 19, T.14 N., R.20 W., P.M., Montana.

Record: Set a post in mound of earth with pits and charred stake as per instructions.

Found: No evidence of original corner found. The corner position is within a county road.

DESCRIPTION OF MONUMENT AND ACCESSORIES ESTABLISHED TO PERPETUATE THE ORIGINAL LOCATION OF THIS CORNER:

I determine the corner position by single proportionment, date of work: April 74 and set a brass cap in a concrete filled 2" x 30" pipe 32" in the ground, from which:



A fence post bears S53°44' 16.8 feet  
 A fence post bears N20°50' W, 31.6 feet.

SKETCH, WITH COURSE AND DISTANCE TO ADJACENT CORNERS IF DETERMINED IN THIS SURVEY. (MAY SKETCH OR FASTE REPRODUCTION ON REVERSE SIDE.)

See Certificate of Survey Number 306 for ties to other corners.

Surveyor's Seal: MONTANA GORDON E. SORENSON 2375 ES PR. 12. 1989 & LINDA SURVEYOR

I, James E. Weatherly certify that the information shown herein is true and correct.

I, Gordon E. Sorenson certify that I have carefully performed or reviewed this work done on the diagrammed corner as reported on this recordation form and approve the same.

Signature of Ground Party: [Signature]  
 Signature of Surveyor: [Signature]

DIAGRAM OF CORNER:  

 13 18  
 24 19  
 1/4 Corner  
 24 19  
 25 30  
 T.14N, R.21W

Registration Number: **348485**

Office of Clerk and Recorder, County of Missoula  
 This "corner record" was filed for record on the 24 day of May 1974, was noted on the cross-index plat and is assigned page No. 206 in book No. 140, Copy Clerk  
 By: [Signature] Deputy Official  
 Cross Index No. 25 T. 14 N R. 21 W Mer.

**Corner Recordation Form or Other Supporting Document**

Point # 5840