

Missoula County Control Point Datasheet

Monument Description: 2-1/4" Brass Cap, Illegible

Project Name: ALL

Station Description: Section Corner

Date Visited: July 13, 2010

Monument Stability: D GPS Visibility: A

Observer: SEN

Quad. Name: Primrose

T. 14 N.

R. 21 W. R. 20 W.

13	18
24	19

NAD 83 (2007) Lat/Long Position

46°57'53.781"N

114°11'14.555"W

NAVD 88 Elevation: 3083.6 sft.

Notes:

Monument falls in an irrigation ditch along the south edge of Pulp Mill Road, so it may be under water.

PVC pipe shown in photo was temporarily placed for bailing purposes.

Photo of Monument



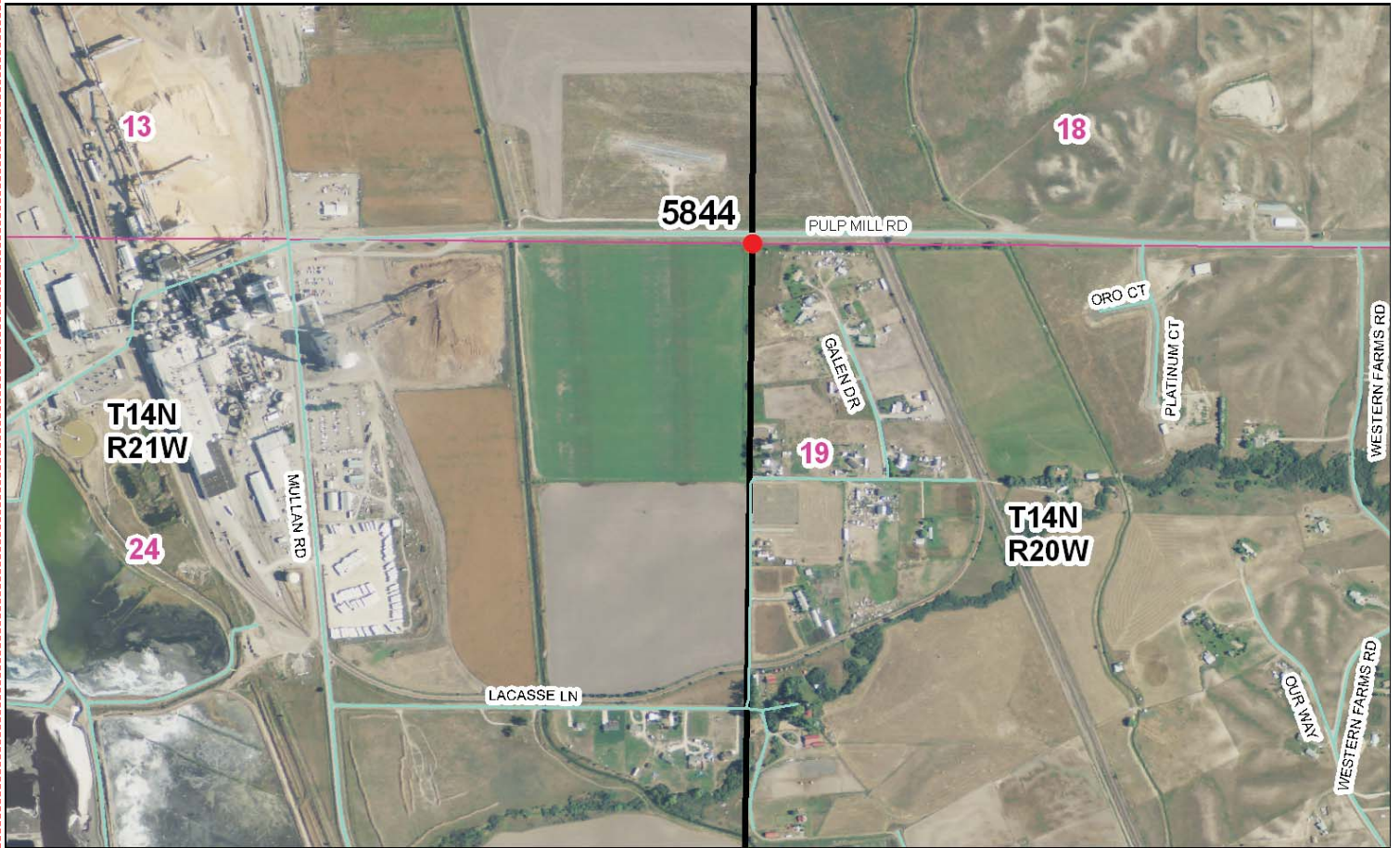
Photo Looking South



Photo Looking West



To Reach: 2wd access.



Map of Area

CERTIFIED LAND CORNER RECORDATION

DESCRIPTION OF CORNER EVIDENCE FOUND, AND ORIGINAL RECORD (IF KNOWN)

At the Section corner common to sections 13 & 24, T.14N., R.21W., & Sections 18 & 19, T.14N., R. 20W., P.M., Montana.

Record: Set a post in mound of earth with pits & charred stake as per instructions.

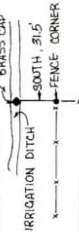
Found: No evidence of original corner found. Corner position was disturbed by highway construction.

DESCRIPTION OF MONUMENT AND ACCESSORIES ESTABLISHED TO PERPETUATE THE ORIGINAL LOCATION OF THIS CORNER:

Date of work: Nov. 1973

I established the corner position by projecting the Section line from the west and intersecting it with the N-S fence line.

I set a 2" Brass Cap affixed to a 2" x 30" iron pipe 20" in the ground. The corner falls in an existing irrigation ditch. A fence corner bears South, 31.5 ft.



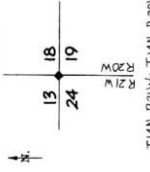
SKETCH, WITH COURSE AND DISTANCE TO ADJACENT CORNERS IF DETERMINED IN THIS SURVEY. (MAY SKETCH OR PASTE REPRODUCTION ON REVERSE SIDE.)

See Certificate of Survey #146 for ties to other corners.

Surveyor's Seal



DIAGRAM OF CORNER:



I, James R. Weatherly certify that the joburation shown herein is true and correct.

Signature of Ground Party Chief

I, Gordon E. Soranson certify that I have carefully performed or reviewed the work done on the diagrammed corner as reported on this recordation form and approve the same.

Signature of Surveyor

2345ES Registration Number

348501

Office of Clerk and Recorder, County of DeWitt

This "corner record" was filed for record on the 24 day of May, 1973, was noted on the cross-index plat and is assigned page No. 24 in book No. 24.

By Gordon E. Soranson County Official

DEPUTY Cross Index No. R-25 T. 14N. R. 21W. Mer.

FORM 125 - 4-63

Corner Recordation Form or Other Supporting Document

Point # 5844