

Missoula County Control Point Datasheet

Monument Description: 1-1/2" Brass Cap 2923S

Project Name: ALL

Station Description: Section Corner

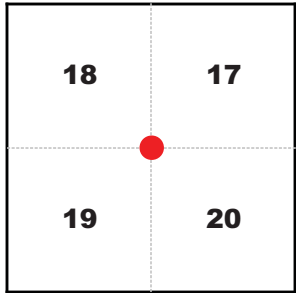
Date Visited: July 13, 2010

Monument Stability: C GPS Visibility: A

Observer: SEN

Quad. Name: Primrose

T. 14 N. R. 20 W.



NAD 83 (2007) Lat/Long Position

46°57'53.803"N

114°10'00.147"W

NAVD 88 Elevation: 3141.4 sft.

Notes:

Photo of Monument



Photo Looking North

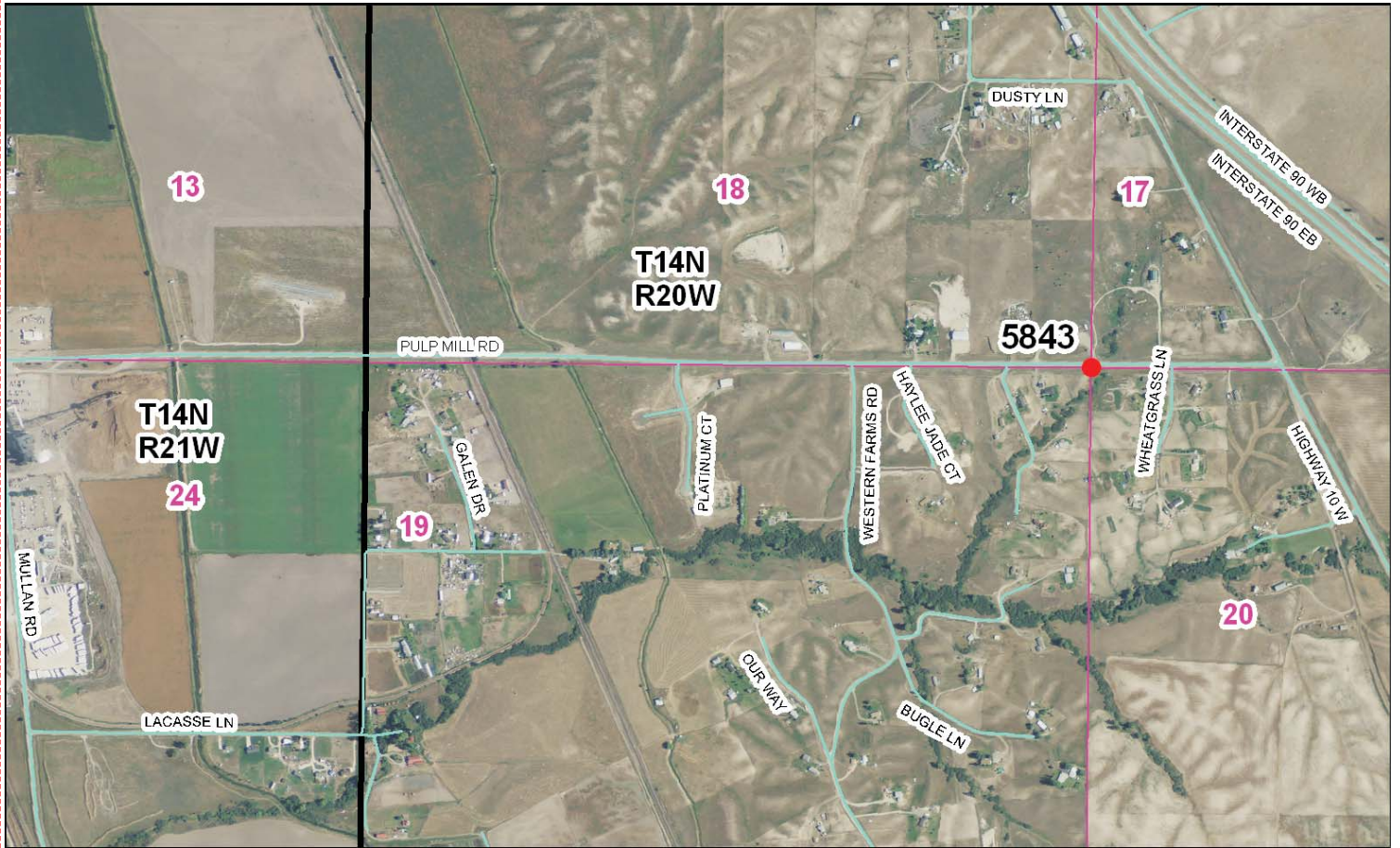


Photo Looking East



Point # 5843

To Reach: 2wd access.



Map of Area

CERTIFIED LAND CORNER RECORDATION

DESCRIPTION OF CORNER EVIDENCE FOUND, AND ORIGINAL RECORD (IF KNOWN)

At the Section corner common to Sections 17, 18, 19, and 20, Township 14 North, Range 20 West, Principal Meridian, Montana, Missoula County, Montana.

RECORD: Unknown at this time.

WE FIND: Corner falls in cut in road

DESCRIPTION OF MONUMENT AND ACCESSORIES ESTABLISHED TO PERPETUATE THE ORIGINAL LOCATION OF THIS CORNER.

Date of work: May 1972

WE ESTABLISH this corner by tie from State Highway Plans.

TO PERPETUATE this corner we set 1 1/2" brass cap monument and established the following reference monuments:

A nail in power pole bears S.10°00'W., 27.02 Feet.

Variance used: 20° E.



SKETCH, WITH COURSE AND DISTANCE TO ADJACENT CORNERS IF DETERMINED IN THIS SURVEY. (MAY SKETCH OR PASTE REPRODUCTION ON REVERSE SIDE.)

DIAGRAM OF CORNER:

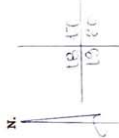
I, Dennis Appolebury, certify that the information shown herein is true and correct.

Surveyor's Seal



I, Richard A. Ainsworth, certify that I have carefully performed or reviewed the work done on the diagrammed corner as reported on this recordation form and approve the same.

Signature of Surveyor



29235 Registration Number

Office of Clerk and Recorder, County of Missoula at 11:05 A.M.

This "corner record" was filed for record on the 13 day of August 1974 was not on the cross-index plat and is assigned page No. 504

FORM 125-11483

By: Robert E. Airdas, County Clerk

By: Spady, Debra M., DEPUTY