

# Missoula County Control Point Datasheet

Monument Description: 2" Brass Cap, No I.D.

Project Name: ALL

Station Description: 1/4 Corner

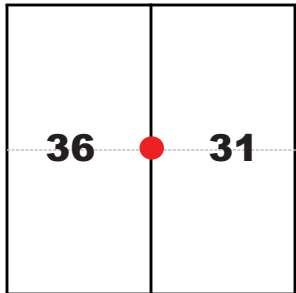
Date Visited: July 12, 2010

Monument Stability: C      GPS Visibility: A

Observer: SEN

Quad. Name: Primrose

T. 14 N.  
R. 21 W. R. 20 W.



### NAD 83 (2007) Lat/Long Position

46°55'43.049"N

114°11'14.703"W

NAVD 88 Elevation: 3066.9 sft.

Notes:

Photo of Monument



Photo Looking East



Photo Looking South



To Reach: 2wd access.



Map of Area

4 PAGE 0144

1. Origin: For subsequent record used for location.
2. Dimensions of evidence found, note discrepancies in the record, state method of establishing line or obliterated.
3. Description of monument and accessories set to perpetuate the corner position.
4. Sketch of corner, show all pertinent data which can best be shown in a sketch, example: corner marking.
5. Certification must be signed and sealed by Land Surveyor registered in the State of Montana.
6. Fill in Cross Index & Section Diagram at bottom of sheet.

**CERTIFIED CORNER RECORDATION**

1/Corner 36/31 T. 14N R. 20&21W P.M.M. Missoula County

RECORD #1 (September, 1870) G.L.O. surveyed by W. H. Baker "Set 1/4 sec. cor. a post in mound of earth, with pits, charred stake & C as per instructions."

RECORD #2 (October 26, 1967) Corner Recordation Doc. #265225

No evidence of original corner. Set a 5 inch diameter concrete monument 20 inches in the ground, with brass cap in top.

A power pole bears S06°28'30"E a distance of 70.50 feet.

A power pole bears S47°44'00"W a distance of 74.05 feet.

FOUND: (July 20, 1988) A 2 inch brass cap in a 4.5 inch diameter concrete cylinder, 4 inches above ground surface.

SET: (July 20, 1988) Left monument in place and set P-K nails in power poles to chain to.

ACCESSORIES: A P-K nail 5 feet up on NW side of power pole bears S51°W, 74.48 feet.

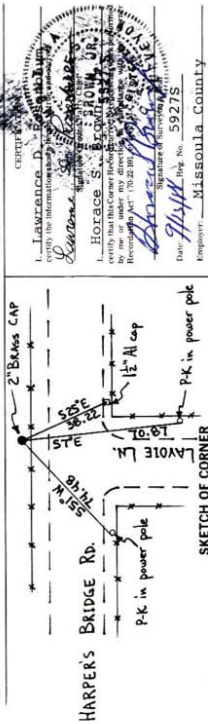
A P-K nail 5 feet up on W side of power pole bears S7°E, 70.87 feet.

A 1-1/2 inch aluminum cap marked "Martinsen 4124S" bears S25°E, 38.22 feet.

Yellow location tags placed on power poles.

36 1/4 31

2" Brass CAP



CERTIFIED CORNER RECORDATION  
I, Lawrence D. ...  
I, Horace S. ...  
Date: 8/13/88  
Inspector: MISSOULA COUNTY

Sec.	36	31
------	----	----

Office of Clerk and Recorder, County of Missoula  
record" was filed for record on September 13, 1988  
was noted on the cross-index plat and is assigned page No. 144, in  
book No. 284-4100  
Doc. # 265225  
Date 3/21/88

County Official deputy  
Cross Index No. X-1 14N R 20W P.M.M.  
X-25 T 14N R21W  
Adopted July 1, 1981, Montana Board of Professional Engineers & Land Surveyors

Corner Recordation Form or Other Supporting Document

Point # 5839