

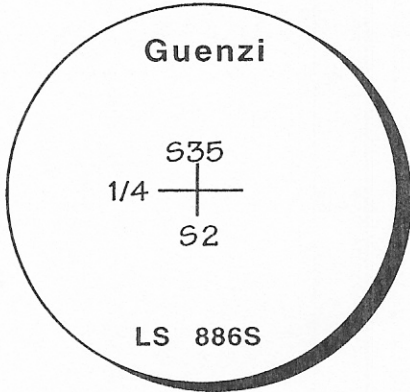
CERTIFIED CORNER RECORDATION

Corner S1/4 Corner Section 35 T. 15N R. 59E PMM Wibaux County

Original Record: Not researched.

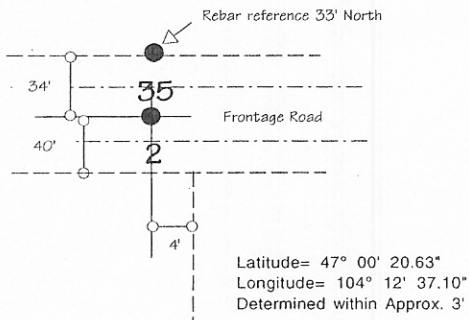
Found: Corner falls in center of Frontage County Road. No evidence found.

Set: Aluminum cap as shown below at proportionate position..



2" Aluminum cap on 1/2" X 24" rebar

Note! Dashed lines indicate fences



SKETCH OF CORNER

CERTIFICATION

I, Richard E. Guenzi
certify the information shown herein is true
and correct.

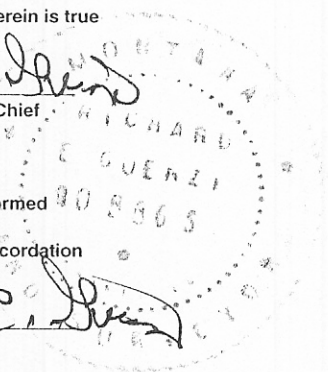
Richard E. Guenzi
Signature of Ground Party Chief

I, Richard E. Guenzi
certify that this Corner Record
correctly represents work performed
by me or under my direction in
compliance with the "Corner Recordation
Act" (70-22-101, et seq., M.C.A.)

Richard E. Guenzi
Signature of Surveyor & Seal

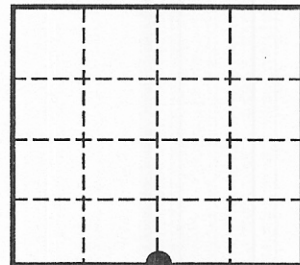
Date: 4-22-99 Reg. No. 0065

Employer: Guenzi Surveys



Document Number: 98823
Office of Clerk and Recorder, County of Wibaux. This "corner record"
was filed for record on May 6, 1999
was noted on the cross-index plat and is assigned page No. 25, in
book No. 2 *Maureen Johnson*
Clerk and Recorder
Fee: None By: _____ Deputy
Cross Index No. Z19 T. 15N R. 59E PMM

Sec. 35



● Corner this sheet

99-038