

INSTRUCTIONS

1. Description of monument and accessories set to perpetuate the corner position.
2. Description of evidence found, note discrepancies in the record, state method of establishing lost or obliterated corners.
3. Description of monument and accessories set to perpetuate the corner position.
4. Sketch or corner, show all pertinent data which can best be shown in a sketch example, corner marking, topography ties, position of accessories, etc.
5. Certification must be signed and sealed by Registered Land Surveyor in State of Montana.
6. Fill in Cross Index & Section Diagram at bottom of sheet.

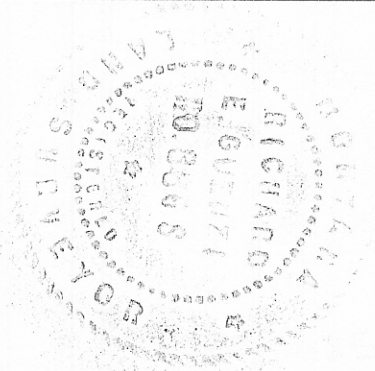
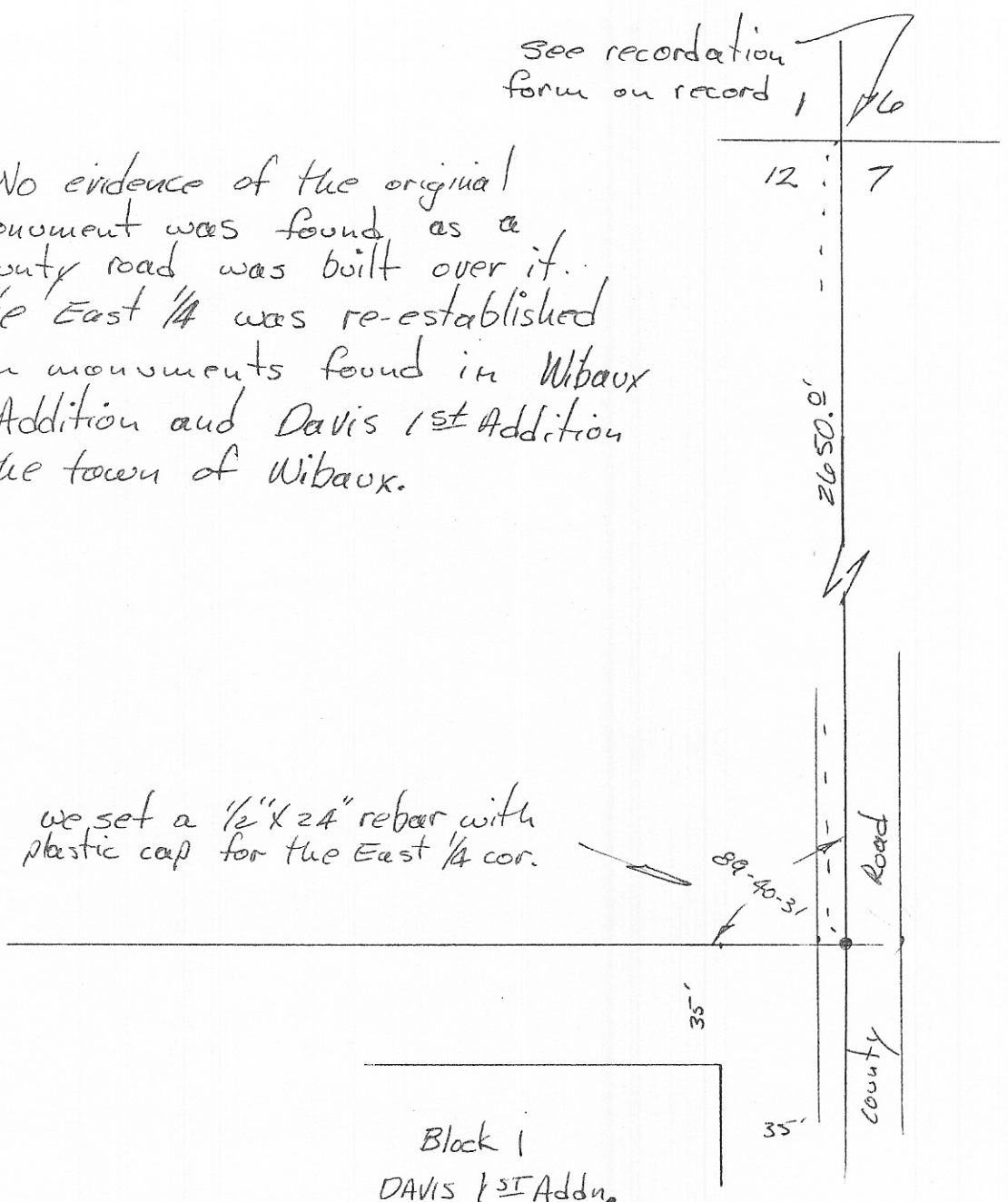
CERTIFIED CORNER RECORDATION

Corner East 1/4 Section 12 T. 14 N R. 59 E P.M.M. Wibaux County

See recordation form on record 176

No evidence of the original monument was found as a county road was built over it. The East 1/4 was re-established from monuments found in Wibaux 1st Addition and Davis 1st Addition in the town of Wibaux.

we set a 1/2" x 24" rebar with plastic cap for the East 1/4 cor.



86183

SKETCH OF CORNER

CERTIFICATION

I, _____
certify the information shown herein is true and correct.

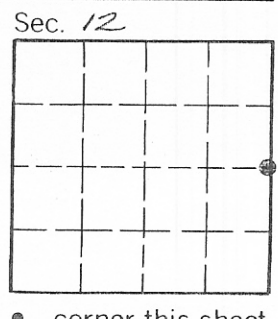
Signature Ground Party Chief
I, Richard E. Guezi
certify that this Corner Record correctly represents work performed by me or under my direction in compliance with the "Corner Recordation Act" (70-22-101, et seq., M.D.A.)

Signature of Surveyor & Seal
Richard E. Guezi

Date: _____ Reg. No. 8865
Employer: Guezi Surveys

Office of Clerk and Recorder, County of Wibaux. This "corner record" was filed for record on the 6th January day of 1983 was noted on the cross-index plat and is assigned page No. 21, in book No. 2

Marilyn Blome
County Official



Cross Index No. 1 Sec. 12 T. 14 R. 59 P.M.M.

• - corner this sheet

G-25

92-223

7