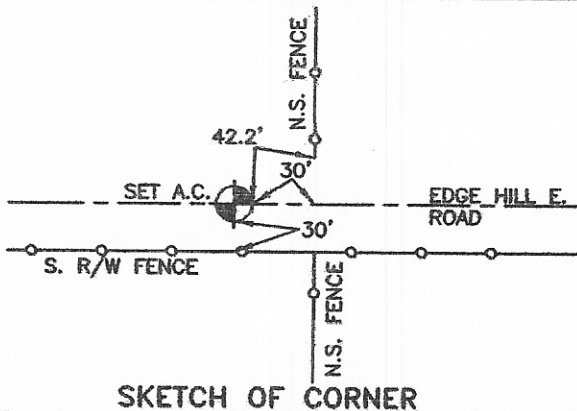
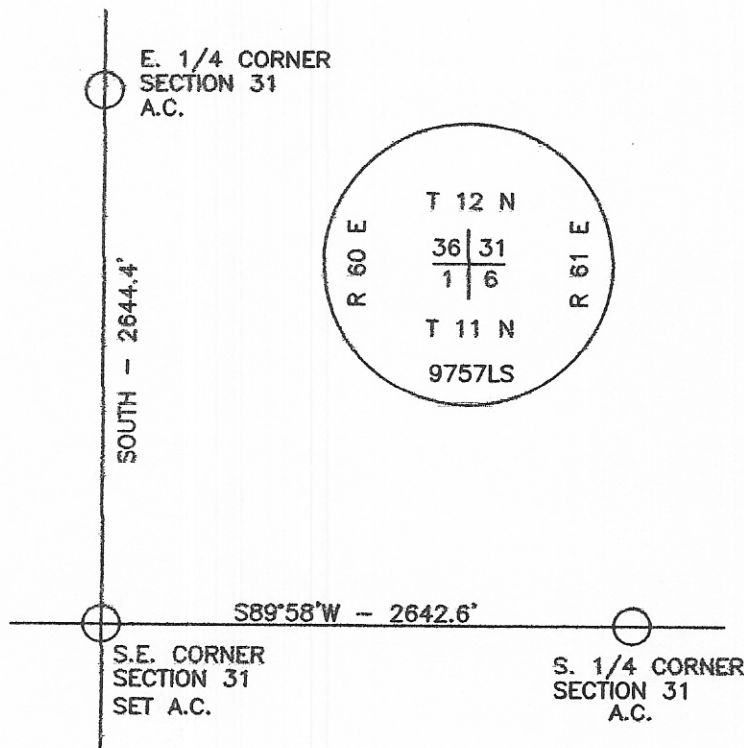


CERTIFIED CORNER RECORDATION

Corner S.W. COR. - SEC. 31 T. 12 N. R. 61 E. P.M.M. WIBAUX County

1. SET A 18" x 10" x 6" SANDSTONE, 12" IN GROUND, PROPERLY MARKED, DUG PITS AND RAISE MOUND OF EARTH.
2. ORIGINAL MONUMENT DISTURBED BY ROAD CONSTRUCTION.
3. MEASURED EXISTING FEATURES, FIT WELL WITH RECORD BEARING AND DISTANCE.
4. SET 5/8" X 18" REBAR WITH 1 1/2" ALUMINUM SURVEY CAP
5. SEE SKETCH FOR TIES.



SKETCH OF CORNER

CERTIFICATION

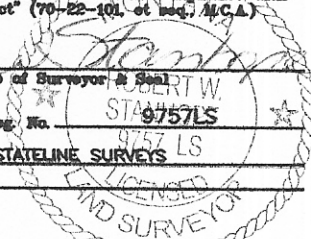
I, _____
certify the information shown herein is true and correct.

Signature Ground Party Chief
ROBERT W. STANHOPE

I, _____
certify that this Corner Record correctly represents work performed by me or under my direction in compliance with the "Corner Recordation Act" (70-22-101 et seq., M.C.A.)

Signature of Surveyor & Seal
Robert W. Stanhope
ROBERT W. STANHOPE
9757 LS
STATELINE SURVEYS

Date: 3.8.08 Reg. No. _____
Employer: _____



Office of Clerk and Recorder County of _____ . This "corner record" was filed _____ Pages: 1
STATE OF MONTANA WIBAUX COUNTY
RECORDED: 03/11/2008 3:00 KOI: CORNER
was noted on Patricia Zinda CLERK AND RECORDER
FEE: \$0.00 BY: *Patricia Zinda*
book No. _____ TO: FILED NO, RETURN, _____

Cross Index No. Z-1 T. 12 N. R. 61 E. P.M.M.

Adopted July 1, 1981, Montana Board of Professional Engineers & Land Surveyors

Sec. 31

• corner this sheet