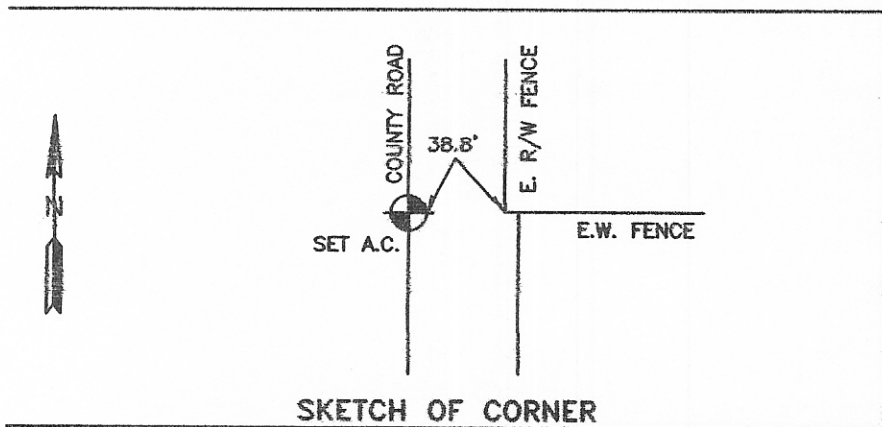
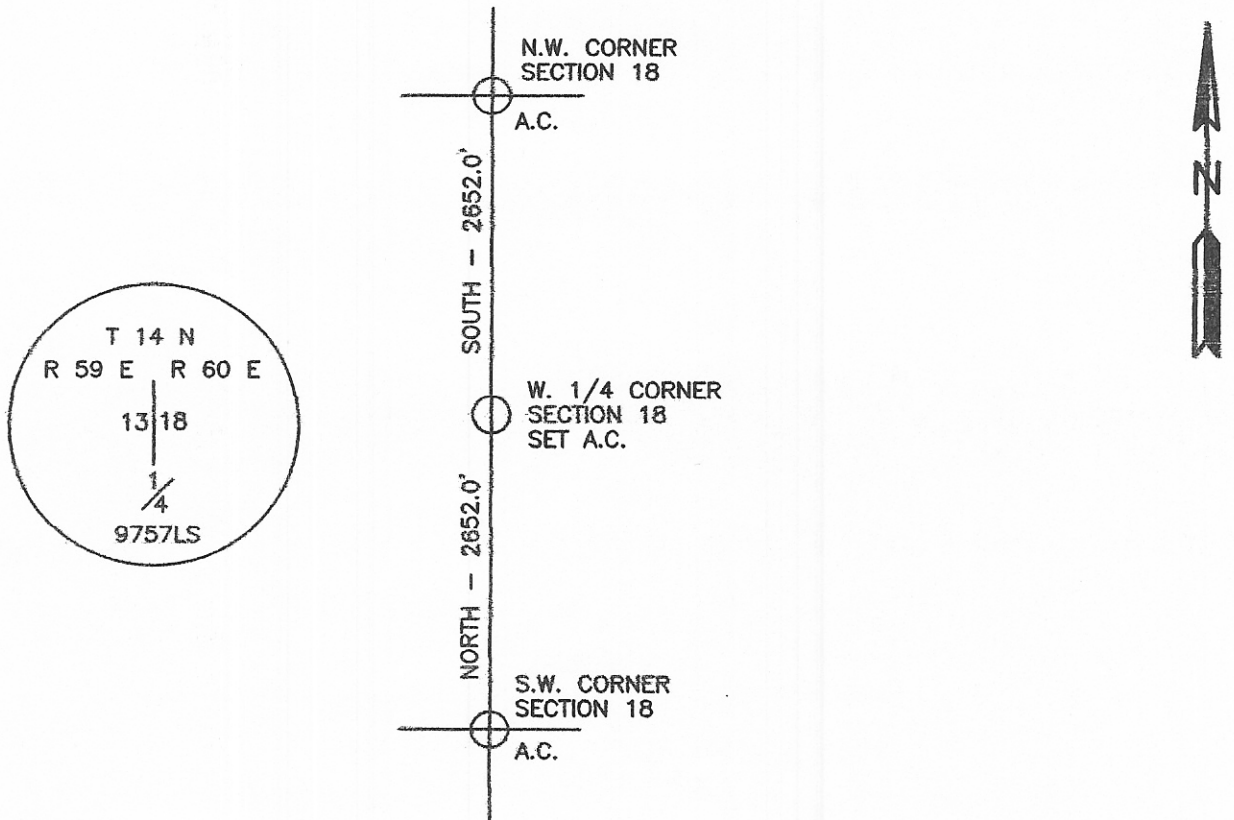


CERTIFIED CORNER RECORDATION

Corner W.1/4 COR. - SEC. 18 T. 14 N. R. 60 E. P.M.M. WIBAUX County

1. ORIGINAL MONUMENT DISTURBED BY ROAD CONSTRUCTION.
2. SINGLE PROPORTION AND SET 5/8" X 24" REBAR WITH 1 1/2" ALUMINUM SURVEY CAP
3. SEE SKETCH FOR TIES.



CERTIFICATION

I, _____
certify the information shown herein is true and correct.

Signature Ground Party Chief
ROBERT W. STANHOPE

I, _____
certify that this Corner Record correctly represents work performed by me or under my direction in compliance with the "Corner Recordation Act" (10-22-101, et seq., M.C.A.)

Signature of Surveyor & Seal
Robert W. Stanhope
STANHOPE
9757 LS

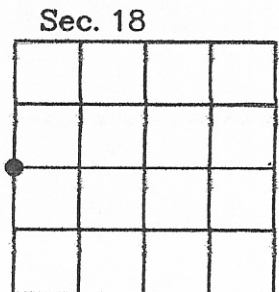
Date: 3.16.08 Eng. No. 9757 LS
Employer: STATELINE SURVEYS

Offi 102470 CORNER Pages: 1
STATE OF MONTANA WIBAUX COUNTY
recd RECORDED: 03/19/2008 9:00 KOI: CORNER
was Patricia Zinda CLERK AND RECORDER
FEE: \$0.00 BY: *Patricia Zinda*
book TO: FILED NO, RETURN, .

... This "corner

_____, in

County Official



Cross Index No. L-1 T. 14 N. R. 60 E. P.M.M.

Adopted July 1, 1961, Montana Board of Professional Engineers & Land Surveyors