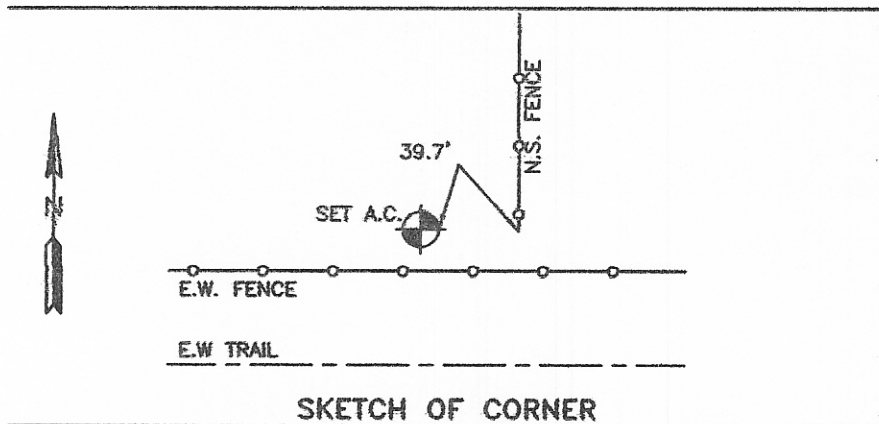
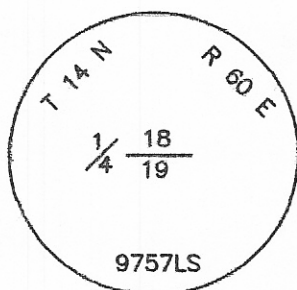
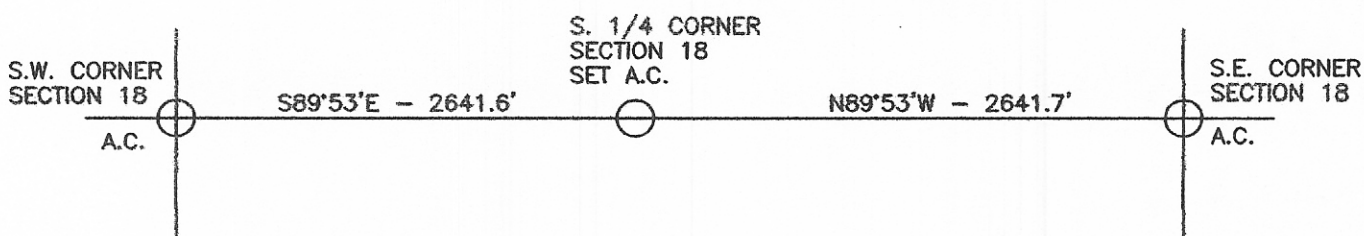


CERTIFIED CORNER RECORDATION

Corner S.1/4 COR. - SEC. 18 T. 14 N. R. 60 E. P.M.M. WIBAUX County

1. NO EVIDENCE OF ORIGINAL MONUMENT.
2. SINGLE PROPORTION AND SET 5/8" X 18" REBAR WITH 1 1/2" ALUMINUM SURVEY CAP
3. SEE SKETCH FOR TIES.



CERTIFICATION

I, _____
certify the information shown herein is true and correct.

Signature Ground Party Chief
ROBERT W. STANHOPE

I, _____
certify that this Corner Record correctly represents work performed by me or under my direction in compliance with the "Corner Recordation Act" (70-22-101, et seq., M.C.A.)

Signature of Surveyor & Seal
Robert W. Stanhope

Date: **3.16.08** Reg. No. **9757LS**
Employer: **STATELINE SURVEYS**

Offi 102471 CORNER Pages: 1
STATE OF MONTANA WIBAUX COUNTY
rec RECORDED: 03/19/2008 9:00 KOI: CORNER
was Patricia Zinda CLERK AND RECORDER.
FEE: \$0.00 BY: *Patricia Zinda*
book TO: FILED NO. RETURN, .

— . This "corner

_____, in

County Official

Cross Index No. N-3 T. 14 N. R. 60 E. P.M.M.

Adopted July 1, 1981, Montana Board of Professional Engineers & Land Surveyors

