

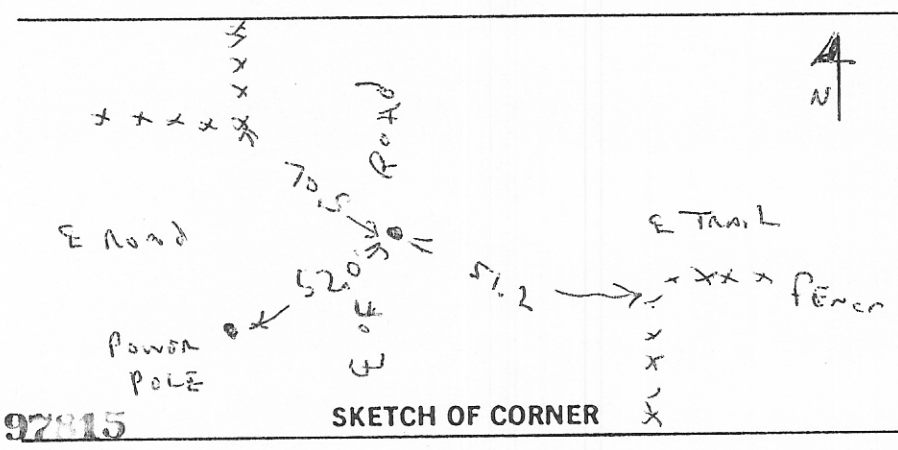
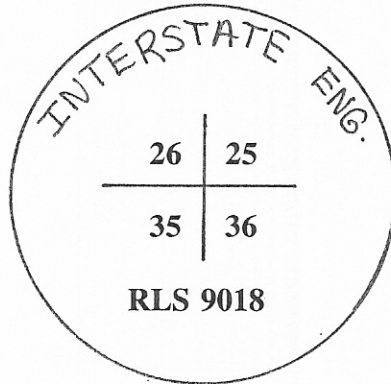
INSTRUCTIONS

1. Land/or subsequent record used to evaluate the corner position.
2. Location of evidence found, note discrepancies in the record, state method of establishing lost or old corner.
3. Description of monument and accessories set to perpetuate the corner position.
4. Sketch of corner, show all pertinent data which can best be shown in a sketch example, corner marking, topography lines, position of accessories, etc.
5. Certification must be signed and sealed by Land Surveyor registered in the State of Montana.
6. Fill in Cross Index & Section Diagram at bottom of sheet.

CERTIFIED CORNER RECORDATION

Corner Southwest Section 25 T. 14N R. 60E P.M.M. Wibaux County

1. Had a copy of G.L.O. Plat.
2. Didn't find monument at this corner.
Set monument from Lines of Occupation.
3. Set #5 rebar with 2" aluminum cap stamped:



1. I, RICHARD H. THOM, certify the information shown herein is true and correct.

Signature of Surveyor & Seal

1. I, Richard H. Thom, certify that this Corner Record correctly represents work performed by me or under my direction in compliance with the "Corner Recordation Act" (10-2-101 et seq., M.C.A.)

Signature of Surveyor & Seal

Date: 6/97 Reg. No. 9018S

Employer: Interstate Engineering, Inc.

97815

SKETCH OF CORNER

Office of Clerk and Recorder, County of Wibaux. This "corner record" was filed for record on June 10, 1997 was noted on the cross-index plat and is assigned page No. 22-7, in book No. 2

Marlene Blaine
County Official

