

# CERTIFIED CORNER RECORDATION

Corner 10, 11 / 15, 14 T. 15 N. R. 17 E. P.M.M. FERGUS County

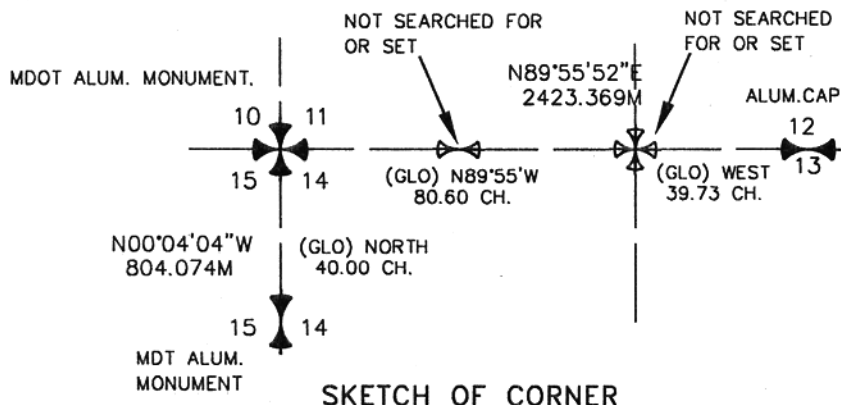
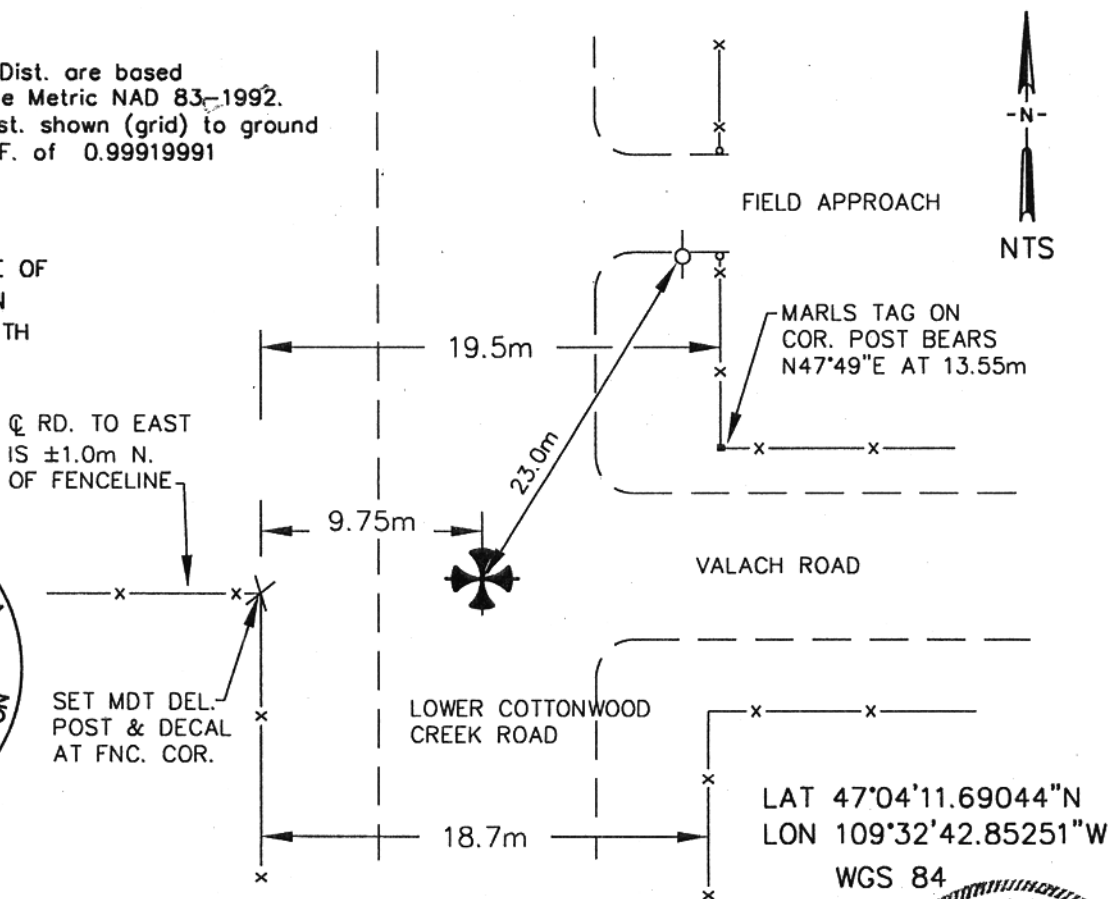
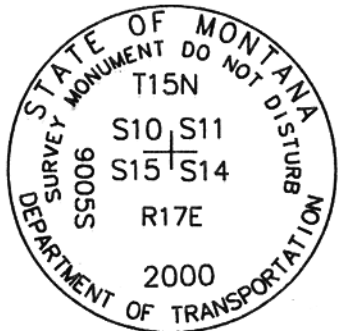
Original Record: Set a limestone 13x7x6 ins 9 ins in the ground for Corner to Sections 10, (David E. Folsom) 11, 14 & 15 marked with 4 notches on S. 2 notches in E. Dug pits 18 ins (Walter W. deLacy) sq. 12 ins deep in each section. 5 1/2ft distant. 1875

Evidence Found: No evidence of original stone. Fenceline to the west and C<sub>r</sub> road to the east, north and south are best evidence.. Centerline of road to east is ±1.0M N. of fence line to west. Split the difference for the latitudinal position of corner and the centerline of N-S road for a longitudinal position.

Perpetuation: Set a standard MDT Aluminum Monument so that the cap is 20cm below ground. Set a No.5 61cm long rebar inside of Monument. Cap is stamped as shown below.

**NOTE:** \*Bearing and Dist. are based on State Plane Metric NAD 83-1992. To convert Dist. shown (grid) to ground divide by C.A.F. of 0.99919991

\* SEE CERTIFICATE OF SURVEY FILED IN CONJUNCTION WITH THIS PROJECT.



CERTIFICATION

I, SCOTT BLOOMERADER 9005 LS, certify the information shown herein is true and correct.

Signature Ground Party Chief

I, Scott Bloomerader, certify that this Corner Record correctly represents work performed by me or under my direction in compliance with the "Corner Recordation Act" (70-22-101, et seq., M.C.A.)

Signature of Surveyor & Seal

Date: 9/24/2001 Reg. No. 9005 LS

Employer: HKM Engineering Inc Billings, MT

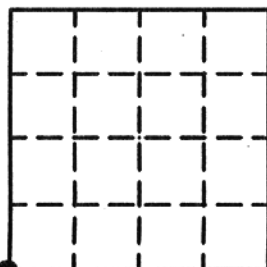
Office of Clerk and Recorder, County of FERGUS. This "corner record" was filed for record on SEP 26 2001 was noted on the cross-index plat and is assigned page No. 21 in book No. 6 Lathy A. Folsom Susan M. deLacy, D.P. County Official

Cross Index No. J-17 T. 15 N. R. 17 E. PMM

Adopted July 1, 1981, Montana Board of Professional Engineers & Land Surveyors

61803

Sec. 11-T15N-R17E



• - corner this sheet