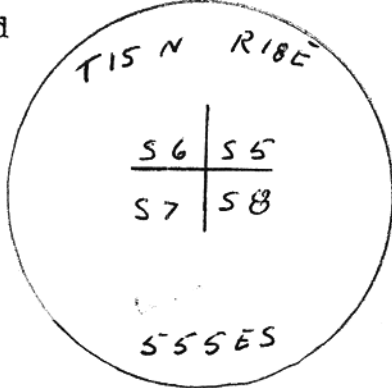


- corners.
 3. Description of monument and accessories set to perpetuate the corner position.
 4. Sketch of corner, show all pertinent data which can best be shown in a sketch example, corner marking, topography ties, position of accessories, etc.
 5. Certification must be signed and sealed by Land Surveyor registered in the State of Montana.
 6. Fill in Cross Index & Section Diagram at bottom of sheet.

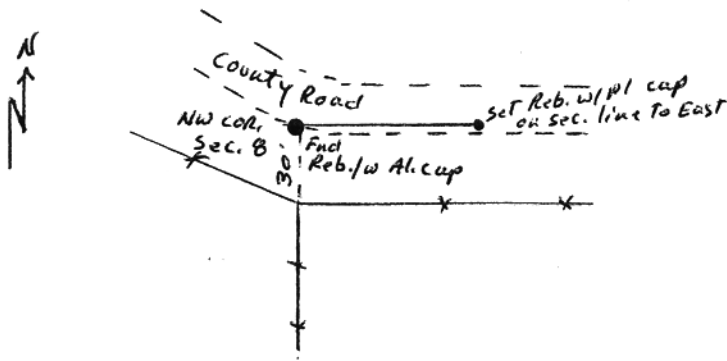
CERTIFIED CORNER RECORDATION

Corner N.W. Sec. 8 T. 15 N R. 18 E P.M.M. FERGUS County

1. SUBSEQUENT RECORD: Certificate of Survey No. 97 by Alex Ragenovich shows that he established the N $\frac{1}{4}$ cor. of Sec. 8 by single proportion distance.
2. Mr. John Green the subdivider of C.O.S. No. 97 related that he helped Mr. Ragenovich measure from the N.W. cor. of Sec. 28, east to set the $\frac{1}{4}$ corner and the corner pins of his C.O.S.
3. At the corner point, I found a 5/8 ins. dia. rebar with a 1 $\frac{1}{2}$ ins. dia. Alum. cap marked



set in small mound of stones in county roads' south borrow ditch, 30 feet north of fence corner post of road right-of-way fence E - NW and south. I set a 5/8 ins. dia. rebar with plastic cap, 3 ins. below road surface, on section line to east, at 60.00 feet.



SKETCH OF CORNER

CERTIFICATION
L.S. 52105

I, _____ certify the information shown herein is true and correct.

Signature Ground Party Chief

I, Stewart Nash certify that this Corner Record correctly represents work performed by me or under my direction in compliance with the "Corner Recordation Act" (70-22-101, et seq., M.C.A.)

Stewart Nash
Signature of Surveyor & Seal

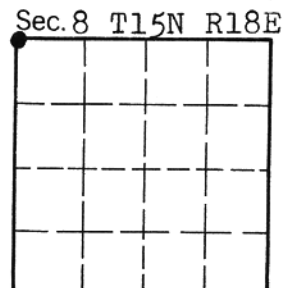
Date: 10-2-87 Reg. No. 52105

Employer: SELF

Office of Clerk and Recorder, County of FERGUS. This "corner record" was filed for record on NOV 9 1987 was noted on the cross-index plat and is assigned page No. 248, in book No. 2

Robbie & Pallett by M. Barner Dep
County Official

Cross Index No. E-5 T. 15 R. 18 P.M.M.



• - corner this sheet