

CERTIFIED CORNER RECORDATION

Corner $\frac{1}{4}$ $\frac{8}{17}$ T. 15 N. R. 18 E. P.M.M. FERGUS County

Original Record: Set a Limestone 10x6x3 ins marked with an X, 12 ins in the ground for Qt. (David E. Folsom) Sec. Cor. Raised mound of earth 2ft. high 4 1/2ft. base on it and dug pits (Walter W. deLacy) 18 ins sq. 12 ins deep N, S, E & W. 5 1/2ft distant. 1875

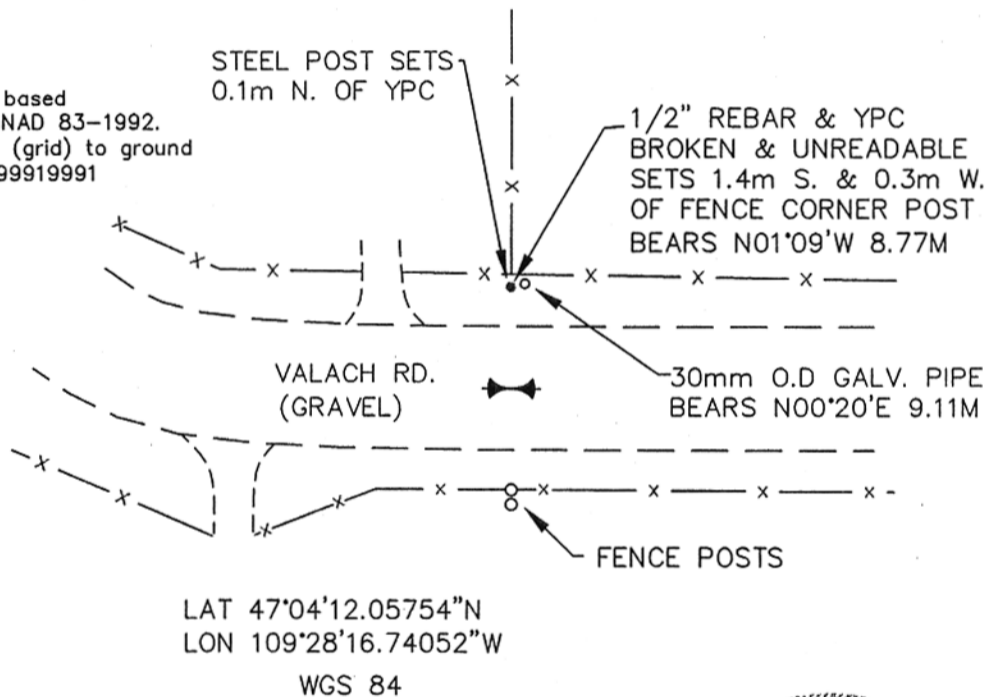
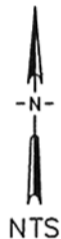
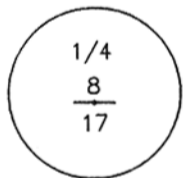
Subsequent Record: Corner record by Ronald F. Bastin (3517ES) refers to this corner and was filed March 21, 1985. Says "found 1 1/2 in. alum. cap on iron pin in center of county road stamped $\frac{1}{4}$ " C.O.S. 487 by Stewart Nash also calls for 5/8" rebar & alum. cap. 555

Evidence Found: In center line of Valach Rd., 16cm below the road surface, find a 38mm alum. cap with rebar. Cap is stamped as shown.

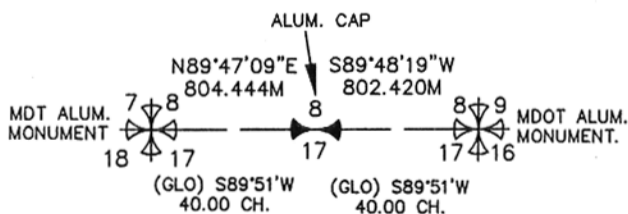
Perpetuation: Corner is in good condition. Made ties and references as shown.

NOTE: *Bearing and Dist. are based on State Plane Metric NAD 83-1992. To convert Dist. shown (grid) to ground divide by C.A.F. of 0.99919991

* SEE CERTIFICATE OF SURVEY FILED IN CONJUNCTION WITH THIS PROJECT.



LAT 47°04'12.05754"N
LON 109°28'16.74052"W
WGS 84



SKETCH OF CORNER

MONTANA
SURVEYORS

I, _____ certify the information shown herein is true and correct.

Signature: Ground Party Chief

I, Scott Bloomerader certify that this Corner Record correctly represents work performed by me or under my direction in compliance with the Corner Recordation Act (70-22-101, et seq., M.C.A.)

Signature of Surveyor & Seal

Date: 9/24/2001 Reg. No. 9005 LS

Employer: HKM Engineering Inc Billings, MT

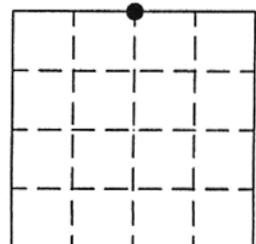
Office of Clerk and Recorder, County of FERGUS. This "corner record" was filed for record on SEP 26 2001

was noted on the cross-index plat and is assigned page No. 5, in book No. 6e Lathy A. Schersty Susan M. Newby, Dep County Official

Cross Index No. J-7 T. 15 N. R. 18 E. PMM

Adopted July 1, 1981, Montana Board of Professional Engineers & Land Surveyors

Sec. 17-T15N-R18E



• - corner this sheet

61787