

CERTIFIED CORNER RECORDATION

Corner 8 | 9
17 | 16 T. 15 N. R. 18 E. P.M.M. FERGUS County

Original Record: Set a sandstone 12x10x5 ins 8 ins in the ground for Corner to Sections 8, (David E. Folsom) 9, 16 & 17 marked with 4 notches on S. and 4 notches on E. Dug pits 18 (Walter W. deLacy) ins sq.12 ins deep in each section 5 1/2ft distant.
1875

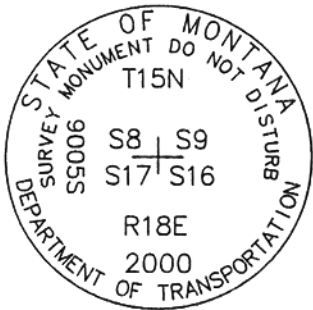
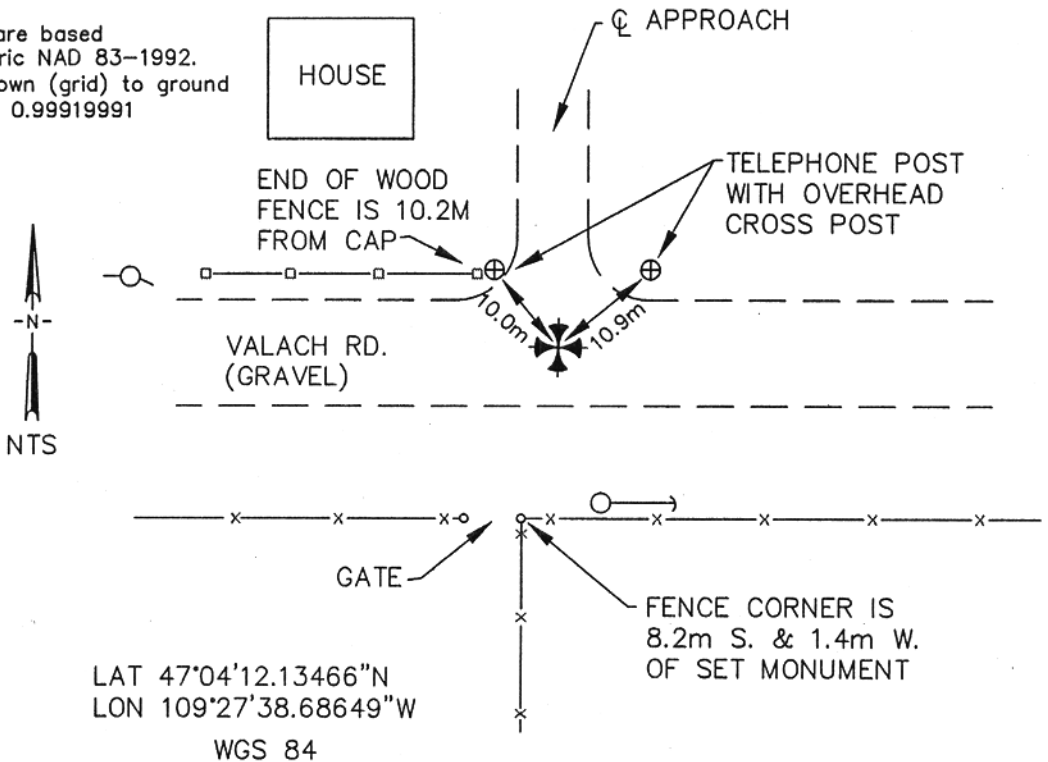
Subsequent Record: C.O.S. 487 by Stewart Nash says found rebar and alum. cap. Corner record by Ronald F. Bastin (3517ES) dated 3-15-85 and filed on Mar 21 1985 finds an iron pin and 1 1/2" alum. cap approx. 10" under surface.

Evidence Found: Rebar with no cap 5/8" x 40cm long buried ±25cm below surface.

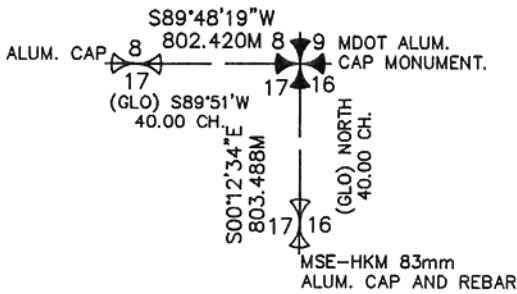
Perpetuation: Set a standard MDT Aluminum Monument in place of found rebar. Left original rebar in place (now inside of monument) and set an extra No.5 61cm long rebar inside of monument. Cap is ±12cm below road surface and stamped as shown.

NOTE: *Bearing and Dist. are based on State Plane Metric NAD 83-1992. To convert Dist. shown (grid) to ground divide by C.A.F. of 0.99919991

* SEE CERTIFICATE OF SURVEY FILED IN CONJUNCTION WITH THIS PROJECT.



LAT 47°04'12.13466"N
LON 109°27'38.68649"W
WGS 84



SKETCH OF CORNER

CERTIFICATION

I, Scott Bloomerader, Surveyor, certify the information shown hereon is true and correct.

Signature: Scott Bloomerader
BLOOMERADER
0005 LS

I, Scott Bloomerader, certify that this Corner Record correctly represents work performed by me or under my direction in compliance with the Corner Recordation Act (MCA) 70-22-101, et. seq.

Signature of Surveyor & Seal: Scott Bloomerader

Date: 9/24/2001 Reg. No. 9005 LS
Employer: HKM Engineering Inc Billings, MT

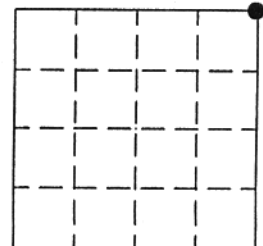
Office of Clerk and Recorder, County of FERGUS. This "corner record" was filed for record on SEP 26 2001

was noted on the cross-index plat and is assigned page No. 6, in book No. 6
Larry A. Folsom Susan M. Worley Dep
County Official

Cross Index No. J-9 T. 15 N. R. 18 E. PMM

Adopted July 1, 1981, Montana Board of Professional Engineers & Land Surveyors

Sec. 17-T15N-R18E



• - corner this sheet

61788