

# CERTIFIED CORNER RECORDATION

Corner South 1/4 section 21 T. 15 N. R. 18 E. P.M.M. Fergus County

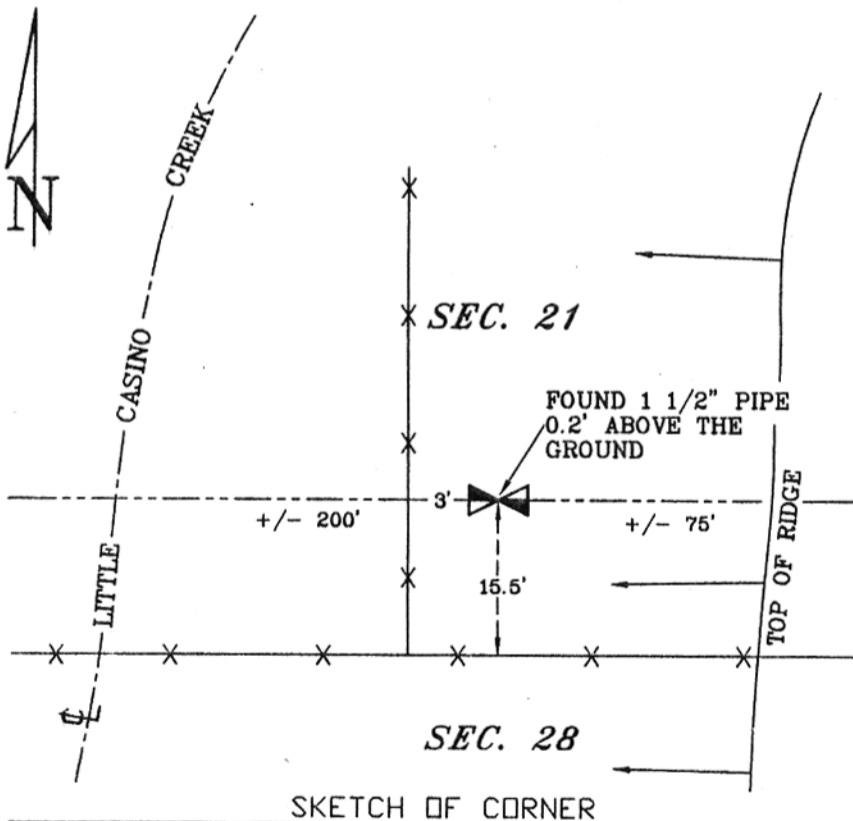
**ORIGINAL RECORD:** (Folsum 1875) Set a Limestone 6 x 5 x 3 in. marked with an "X" 12 in. in the ground for Qu. Sec. Cor. Raised a mound of earth 2 ft. high 4 1/2 ft. base on it. Dug pits 18 in. sq. 12 in. deep N., S., E., & W. 5 1/2 ft. distant

**SUBSEQUENT RECORD:** Corner recordation form Book 1 Page 33 on file in the office of the Fergus County Clerk and Recorder, & Langford Minor Subdivision

**EVIDENCE FOUND:** Found 1 1/2" pipe.

**PERPETUATION:** See drawing below.

**SEE PLAT OF BUTCHER - McCONKEY SUBDIVISION**

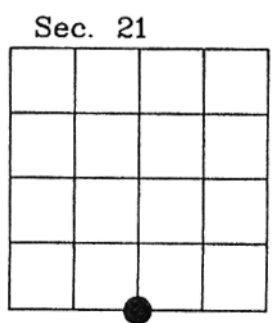


97-107

<b>CERTIFICATION</b>	
I, _____ certify the information shown herein is true and correct.	
Signature Ground Party Chief	
Scott C. Koterba	
I, _____ certify that this Corner Record correctly represents work performed by me or under my direction in compliance with the "Corner Recordation Act" (70-22-101, et seq., M.C.A.)	
<i>Scott C. Koterba</i> Signature of Surveyor & Seal	
Date: <u>5/22/97</u>	Reg. No. <u>10801 LS</u>
Employer: _____	Milestone Surveying

Office of Clerk and Recorder, County of FERGUS. This "corner record" was filed for record on MAY 23 1997 at 8 AM was noted on the cross-index plat and is assigned page No. 225, in book No. H *Larry A. Johnson* County Official *by Kee J. Miller*

Cross Index No. R. 11 T. 15 N. R. 18 E. P.M.M.



• corner this sheet