

CERTIFIED CORNER RECORDATION

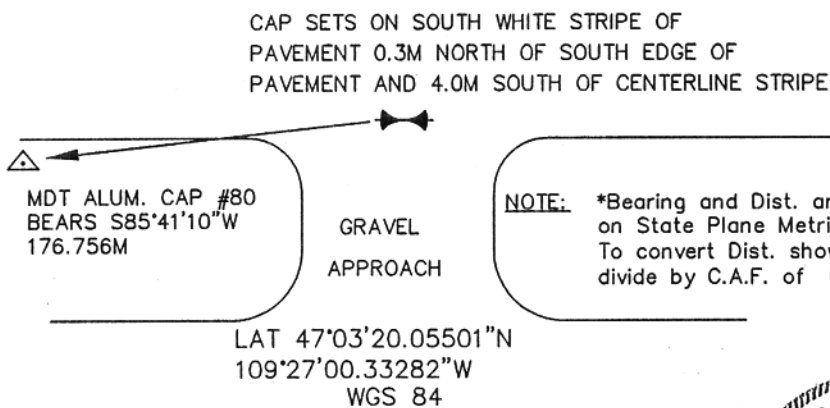
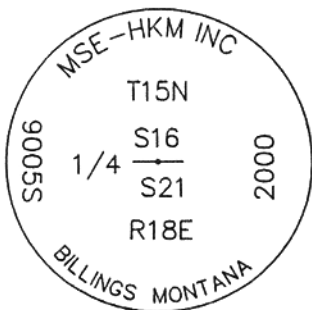
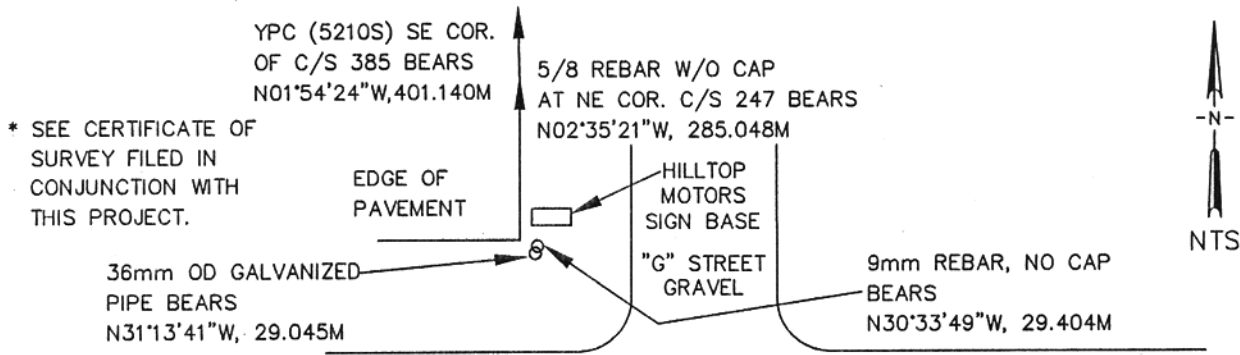
Corner $\frac{1}{4}$ $\frac{16}{21}$ T. 15 N. R. 18 E. P.M.M. FERGUS County

Original Record: Set a sandstone 5x4x3 ins marked with an X, 12 ins in the ground for Qt. (David E. Folsom) Sec. Corner. Raised mound of earth 2ft. high 4 1/2ft. base on it. Dug pits (Walter W. deLacy) 18 ins sq. 12 ins deep N, S, E & W. 5 1/2ft. distant. 1875

Subsequent Record: R/W plans for FAP 235B(4) (Dated 1942) refer to a station at 37+86.6 but do not specify as 1/4 corner, but indicate the Section to be 5281.2 feet. C/S 247 (Dated May 1983) shows the corner at midpoint between Section corners 5279.23 feet apart. C/S 501 (unknown date) also shows the corner at midpoint 5279.23 feet apart and also says "nothing found, nothing set." This is replicated on C/S 385 (unknown date).

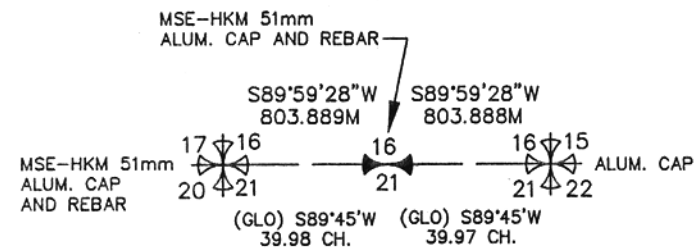
Evidence Found: No evidence of original or subsequent monuments. We measure 5279.08 feet between found Sec. corners. At single proportion we position corner. Tie corners shown on mentioned C/S's and calculated position fits these points within reason.

Perpetuation: Set No. 5 rebar 61cm long with 51mm Alum. cap. Cap sets flush with pavement. Grouted around cap.



NOTE: *Bearing and Dist. are based on State Plane Metric NAD 83-1992. To convert Dist. shown (grid) to ground divide by C.A.F. of 0.99919991

LAT 47°03'20.05501"N
109°27'00.33282"W
WGS 84



SKETCH OF CORNER

MONTANA
REGISTERED SURVEYOR
SCOTT BLOOMENRADER
9005 LS

I, _____ certify the information shown herein is true and correct.

Signature of Scott Bloomenrader, Chief

I, Scott Bloomenrader certify that this Corner Record correctly represents work performed by me or under my direction in compliance with the "Corner Recordation Act" (70-22-101, et seq., M.C.A.)

Signature of Surveyor & Seal

Date: 9/24/2001 Reg. No. 9005 LS

Employer: HKM Engineering Inc Billings, MT

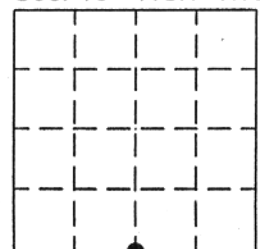
Office of Clerk and Recorder, County of FERGUS. This "corner record" was filed for record on SEP 26 2001

was noted on the cross-index plat and is assigned page No. 14, in book No. 6 Larry A. Schubert Susan M. Worley - Dep County Official

Cross Index No. N-11 T. 15 N. R. 18 E. P.M.M

Adopted July 1, 1981, Montana Board of Professional Engineers & Land Surveyors

Sec. 16-T15N-R18E



• - corner this sheet