

# CERTIFIED CORNER RECORDATION

Corner 1/4 21|22 T. 15 N. R. 18 E. P.M.M. FERGUS County

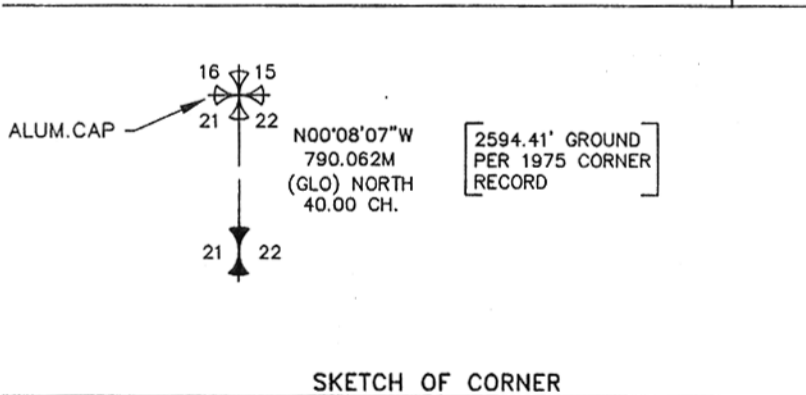
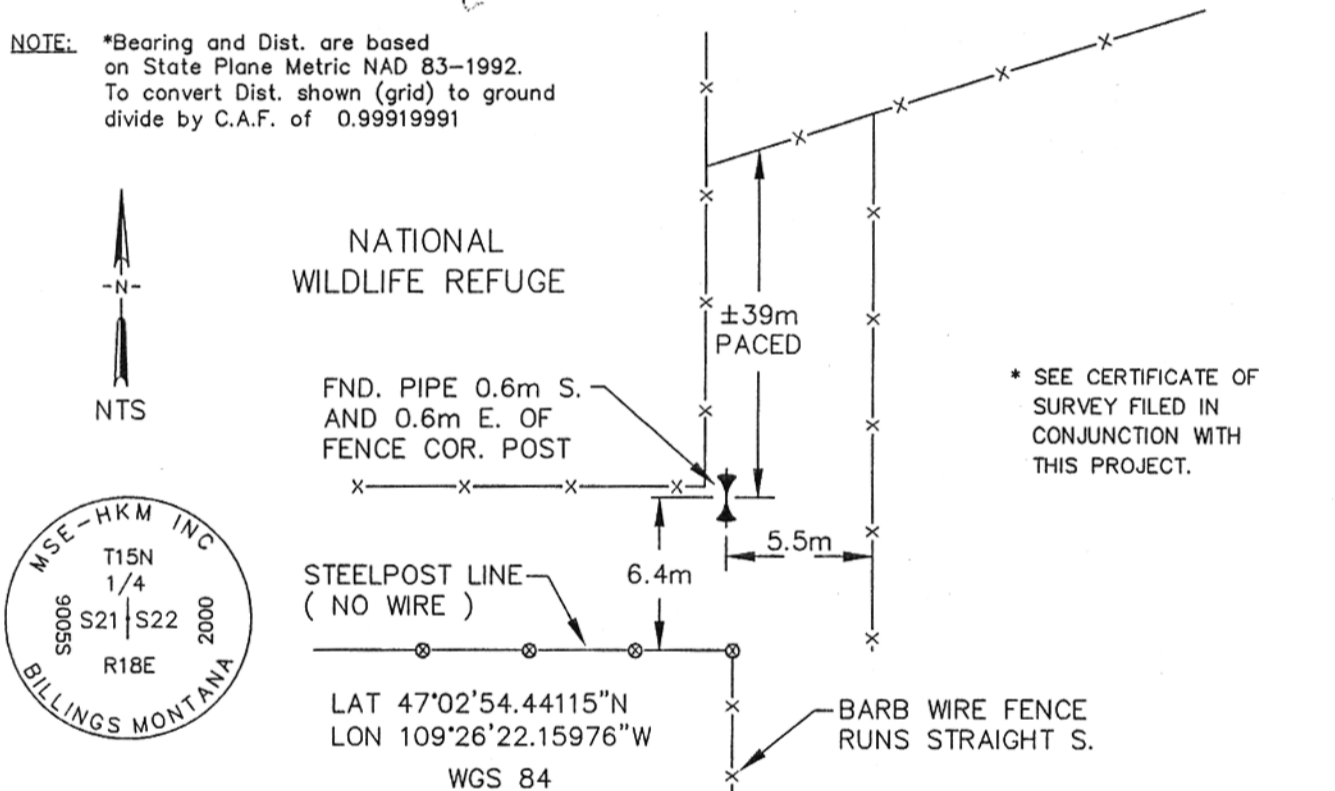
Original Record: Set a limestone 18x8x5 ins 12 ins in the ground for Qt. Sec Cor, marked "1/4" (David E. Folsom) on west face. Dug pits 18 ins sq. 12 ins deep N, S, E, W, 5 1/2ft distant. (Walter W. deLacy) 1875

Subsequent Record: Corner record by James E. Logan (4235S) filed August 6, 1975 finds a 1" iron pipe with stone set alongside. He states, corner in good condition no work done.

Evidence Found: 45mm O.D pipe and on the east side of pipe is original stone with 1/4 marked on W. face. Stone is ?x18x12cm and projects 10cm (as does the pipe).

Perpetuation: Set a 51mm Alum Cap inside of the pipe. Cap is stamped as shown below. Cap and pipe has a steel fence post on the NW side. We used pipe as it appears this is what has been used as a measurement point previously.

**NOTE:** \*Bearing and Dist. are based on State Plane Metric NAD 83-1992. To convert Dist. shown (grid) to ground divide by C.A.F. of 0.99919991



CERTIFICATION

**MONTANA**

I, \_\_\_\_\_ certify the information shown herein is true and correct.

Signature of Ground Party Owner

I, Scott Bloomerader certify that this Corner Record correctly represents work performed by me or under my direction in compliance with the "Corner Recordation Act" (20-22-101, et. seq., M.C.A.)

Signature of Surveyor & Seal

Date: 9/24/2001 Reg. No. 9005 LS

Employer: HKM Engineering Inc Billings, MT

Office of Clerk and Recorder, County of FERGUS. This "corner record" was filed for record on SEP 26 2001

was noted on the cross-index plat and is assigned page No. 18 in book No. 6 Larry A. Schabert Susan M. Wootley-AP County Official

Cross Index No. P-13 T. 15 N. R. 18 E. PMM

Adopted July 1, 1981, Montana Board of Professional Engineers & Land Surveyors

Sec. 21-T15N-R18E

