

CERTIFIED LAND CORNER RECORDATION

DESCRIPTION OF CORNER EVIDENCE FOUND, AND ORIGINAL RECORD (IF KNOWN)

No evidence found as described in original record.

DESCRIPTION OF MONUMENT AND ACCESSORIES ESTABLISHED TO PERPETUATE THE ORIGINAL LOCATION OF THIS CORNER:

Date of work: June 1975

A 5/8 inch by 2 foot rebar was set, with an aluminum cap. Pin was set at the centerline of the existing county road right of way, 4 inches under the surface of the road.

SKETCH, WITH COURSE AND DISTANCE TO ADJACENT CORNERS IF DETERMINED IN THIS SURVEY. (MAY SKETCH OR PASTE REPRODUCTION ON REVERSE SIDE.)

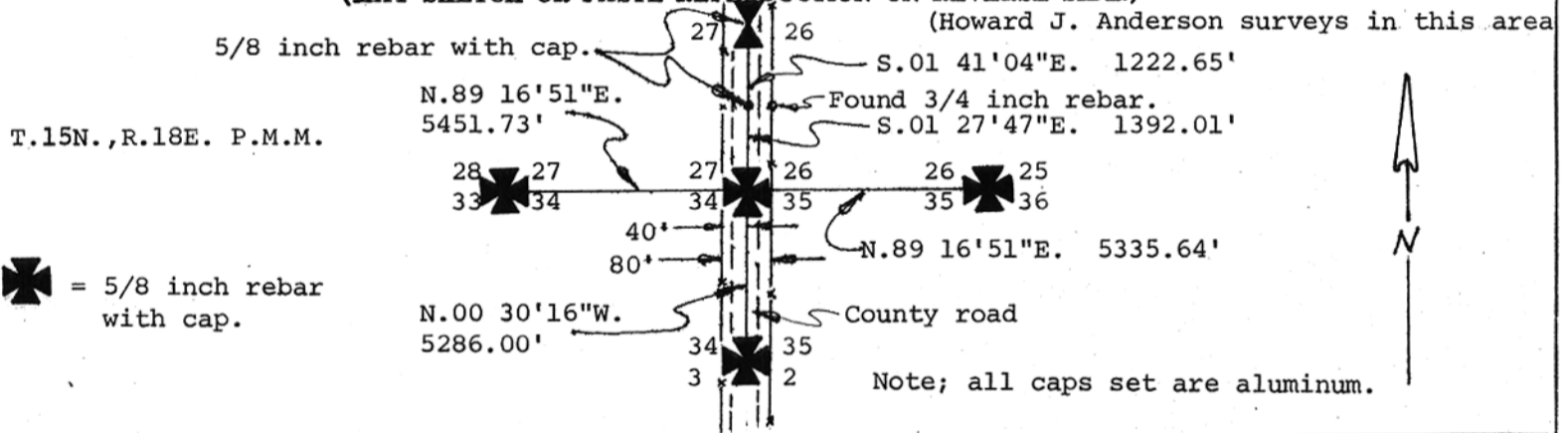


DIAGRAM OF CORNER:



= Corner recorded on the sheet

Surveyor's Seal

I, _____
certify that the information shown herein is true and correct.

Signature of Ground Party Chief

I, James E. Logan
certify that I have carefully performed or reviewed the work done on the diagrammed corner as reported on this recordation form and approve the same.

James E. Logan
Signature of Surveyor

4235S
Registration Number

Office of Clerk and Recorder, County of DeWitt

This "corner record" was filed for record on the AUG 26 1975 day of 19, was noted on the cross-index plat and is

assigned page No. 24, in book No. 1 @ 3 PM May Rathburn
County Official

Form 125 - 45227 Cross Index No. V-17 T. 15 R. 18 Mer.

No fee

24504