

# CERTIFIED CORNER RECORDATION

Corner N 1/4 SEC. 32 T. 15N R. 19E P.M.M. FERGUS County

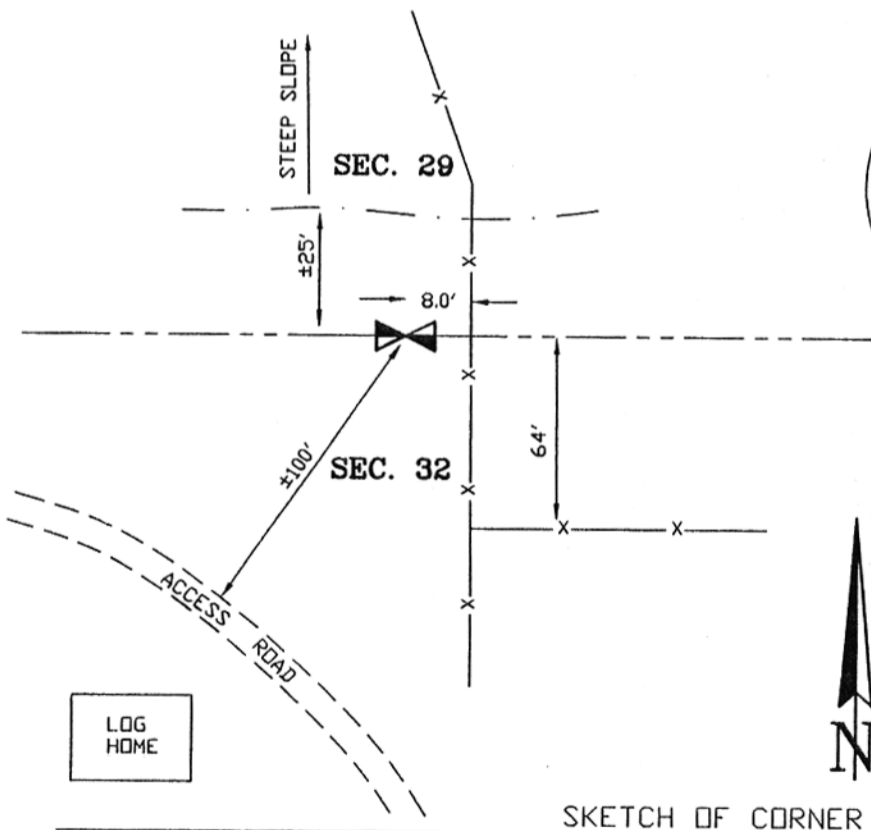
**ORIGINAL RECORD:** (Robinson, 1882) Set a sandstone 18 x 14 x 6 ins. 12 ins. in the ground for 1/4 section corner, marked 1/4 on North face and raised a mound of stone alongside.

**SUBSEQUENT RECORD:** Nash (5210S) reported setting a rebar with aluminum cap on his C/S 321. He set the corner at a single proportion position. No corner record was filed.

**EVIDENCE FOUND:** (February, 2004) Found Nash 1 1/2" aluminum cap in small collar of stone 0.2' above ground. No additional accessories were found.

**PERPETUATION:** (February, 2004) Accepted Nash monument as corner. No additional accessories were set.

### SEE ASSOCIATED CERTIFICATE OF SURVEY



04-569

CERTIFICATION

I, \_\_\_\_\_, certify the information shown herein is true and correct.

Signature Ground Party Chief \_\_\_\_\_

I, Scott C. Koterba, certify that this Corner Record correctly represents work performed by me or under my direction in compliance with the 'Corner Recordation Act' (70-22-101, et seq., M.C.A.)

Scott C. Koterba  
Signature of Surveyor & Seal

Date: 3/1/04 Reg. No. 10801 LS

Employer: Milestone Surveying

SKETCH OF CORNER

074226 Fee: \$.00 Bk Pg

FERGUS COUNTY Filed 03/01/2004 At 04:05 PM  
Cathy Fleharty, Clk & Rcdr By Jim Mansseau  
Return to: FERGUS COUNTY 712 WEST MAIN  
HEWLETT, MT 59457

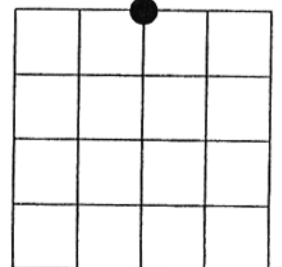
book No. 297

\_\_\_\_\_. This 'corner' \_\_\_\_\_  
I page No. 6, in \_\_\_\_\_

County Official \_\_\_\_\_

Cross Index No. V7 T. 15N R. 19E P.M.M.

Sec. 32



• corner this sheet