

CERTIFIED CORNER RECORDATION

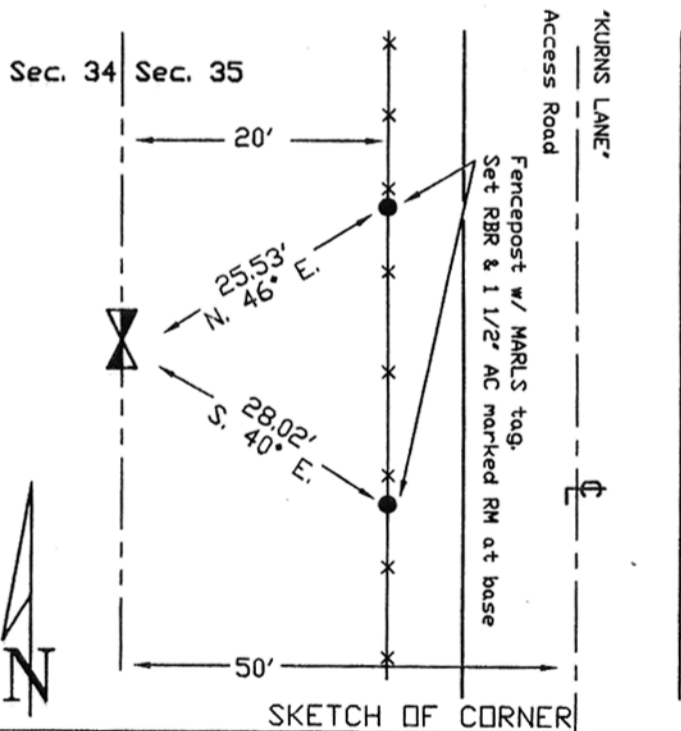
Corner West 1/4 Section 35 _____ T. 15 N. R. 19 E. _____ P.M.M. _____ Fergus _____ County

ORIGINAL RECORD: (G. Robinson 1883) Set a sandstone 14 x 7 x 6 in. 10 in. in the ground for 1/4 Section Corner. Marked 1/4 on W. face and raised a mound of stone alongside - pits impracticable.

SUBSEQUENT RECORD: None.

EVIDENCE FOUND: (May 1997) Found leaning sandstone 15 x 9 x 4".

PERPETUATION: (May 1997) Replaced stone with 5/8" rebar and 2" aluminum cap. Raised collar of stone and set MARLS tag on cedar fence-posts both North and South of the 1/4 Corner. Also set 5/8" rebar with 1 1/2" AC marked RM and noting distance to 1/4 corner at each fence-post with MARLS tag. See drawing below.



97-116

CERTIFICATION

I, _____ certify the information shown herein is true and correct.

Signature Ground Party Chief

Scott C. Koterba

I, _____ certify that this Corner Record correctly represents work performed by me or under my direction in compliance with the "Corner Recordation Act" (70-22-101, et seq. M.C.A.)

Scott C. Koterba
Signature of Surveyor & Seal

Date: 12/11/97 Reg. No. 10801 LS

Employer: Milestone Surveying

Office of Clerk and Recorder, County of FERGUS. This "corner record" was filed for record on DEC 11 1997 was noted on the cross-index plat and is assigned page No. 205, in book No. 4

Larry A. Schubert
County Official

Cross Index No. X17 T. 15 N. R. 19 E. PMM

