

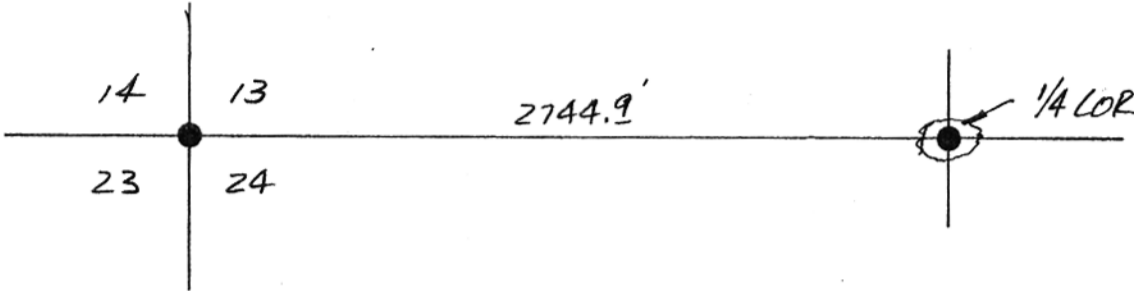
13691

INSTRUCTIONS

1. Original and/or subsequent record used to evaluate the corner position.
2. Description of evidence found, note discrepancies in the record, state method of establishing lost or obliterated corners.
3. Description of monument and accessories set to perpetuate the corner position.
4. Sketch of corner, show all pertinent data which can best be shown in a sketch example, corner marking, topography ties, position of accessories, etc.
5. Certification must be signed and sealed by Land Surveyor registered in the State of Montana.
6. Fill in Cross Index & Section Diagram at bottom of sheet.

CERTIFIED CORNER RECORDATION

Corner North Quarter Sec. 24 T. 15N R. 19E P.M.M. Fergus County



The original sandstone marker was found well set and in good condition. We set a 1/2"x24" rebar with 2" aluminum cap along side. SEE CERTIFICATE OF SURVEY NO:280 FOR MOR INFORMATION.

CERTIFICATION

I, _____ certify the information shown herein is true and correct.

Signature Ground Party Chief

I, Richard E. Guenzi

certify that this Corner Record correctly represents work performed by me or under my direction in compliance with the "Corner Recordation Act" (70-22-101 et seq. M.C.A.)

[Handwritten Signature]
 Signature of Surveyor & Seal

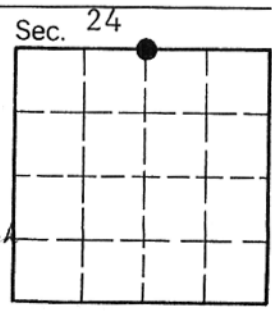
Date: 11-21-84 Reg. No. 886S

Employer: Guenzi Surveys

SKETCH OF CORNER

Office of Clerk and Recorder, County of FERGUS. This "corner record" was filed for record on APR 9 1985 was noted on the cross-index plat and is assigned page No. 59, in book No. 2

[Handwritten Signature]
 County Official



Cross Index No. N-23 T. 15N R. 19E P.M.M. Fergus
 Adopted July 1, 1981, Montana Board of Professional Engineers & Land Surveyors

• - corner this sheet

13691

81-282