

Missoula County Control Point Datasheet

Monument Description: 1/2" Rebar w/ punch mark

Project Name: Ninemile

Station Description: 1/4 Corner

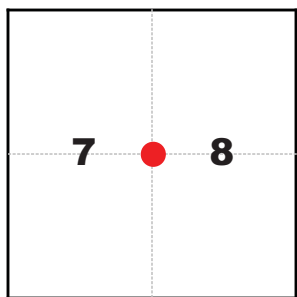
Date Visited: Sept. 9, 2010

Monument Stability: C+ GPS Visibility: C-

Observer: SEN - CLG

Quad. Name: Alberton

T. 15 N. R. 22 W.



NAD 83 (2007) Lat/Long Position

47°04'26.679"N

114°25'11.449"W

NAVD 88 Elevation: 3217.5 sft

Notes:

Monument is 10" below road surface.

Photo of Monument



Photo Looking East

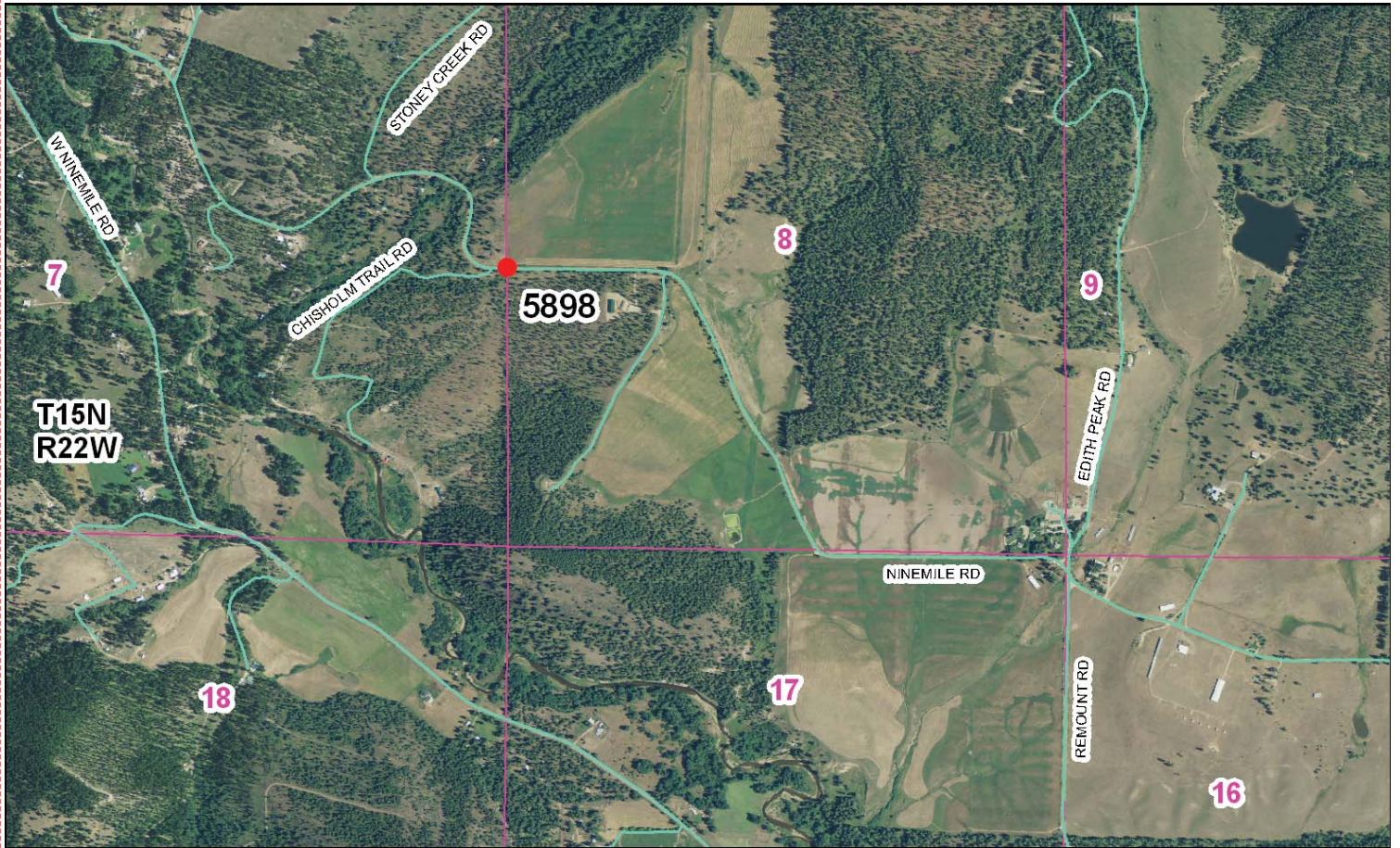


Photo Looking



Point # 5898

To Reach: 2wd access, monument is in the center of the eastbound lane of Ninemile Road.



Map of Area

CERTIFIED LAND CORNER RECORDATION

DESCRIPTION OF CORNER EVIDENCE FOUND, AND ORIGINAL RECORD (IF KNOWN)

Record: Set - A post 3 feet long 3" square 24" in the ground for 1/4 sec. cor. marked 1/4 S on W. Face from which:
 A Pine 24" diam. bears N.40°W., 50 lks. dist. marked 1/4 S B.T.
 A Pine 18" diam. bears south 4 lks. dist. marked 1/4 S B.T.

Found: A 26" Dia. Pine 1/.. and notched plainly bears S. a dist. of 2.5' from cor.
 Note: Bearing tree has been cut, only stump left.

DESCRIPTION OF MONUMENT AND ACCESSORIES ESTABLISHED TO PERPETUATE THE ORIGINAL LOCATION OF THIS CORNER:

To penetrate this corner, using found 10"x5/8" re-bar 5" below the surface of the new Nine Mile Road.
 We set:
 A 3" Ms1a. Co. aluminum cap on a 30"x1 1/2" galv. pipe 26" in the ground, marked R.M.
 A distance 57.32', bearing N.41°W.
 A Ms1a Co. aluminum 3" cap marked R.M., a distance of 48.58 bearing N.38°E.
 We Scribe: A 13" Pine marked R.M. a distance of 45.71 to face of scribe, bearing S.20°W.

Date of work: 4-11-75

SKETCH WITH COURSE AND DISTANCE TO ADJACENT CORNERS IF DETERMINED IN THIS SURVEY. (MAY SKETCH OR PASTE REPRODUCTION ON REVERSE SIDE.)

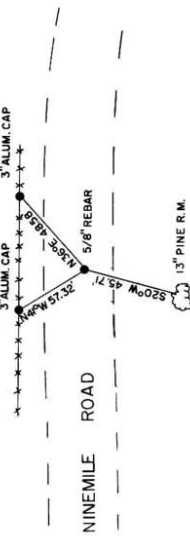


DIAGRAM OF CORNER:

Surveyor's Seal: I, Horace S. Brown, Jr., certify that the information shown herein is true and correct.
 Signature of Ground Party Chief: Horace S. Brown, Jr.
 I, Donald L. Ebbutt, certify that I performed or reviewed the work done on the diagrammed corner as reported on this recordation form and approve the same.
 Signature of Surveyor: Donald L. Ebbutt
 = Corner recorded on the sheet T15N R22W

For Missoula County Registration Number **363999**

Office of Clerk and Recorder, County of Missoula, was noted on the cross-index plat and is recorded in book No. 210-422, in book No. 1925, on the 3rd day of June, 1975.
 Cross Index No. G-5 T. 15N R. 22W Mer.
 1008 125--41403

Corner Recordation Form or Other Supporting Document